

Supplementary Material

Implementation of genomic prediction in *Lolium perenne* (L.) breeding populations

Nastasiya F. Grinberg¹, Alan Lovatt², Matt Hegarty², Andi Lovatt², Kirsten P. Skøt², Rhys Kelly², Tina Blackmore², Danny Thorogood², Ross King¹, Ian Armstead², Wayne Powell^{2,3}, Leif Skøt^{2*}

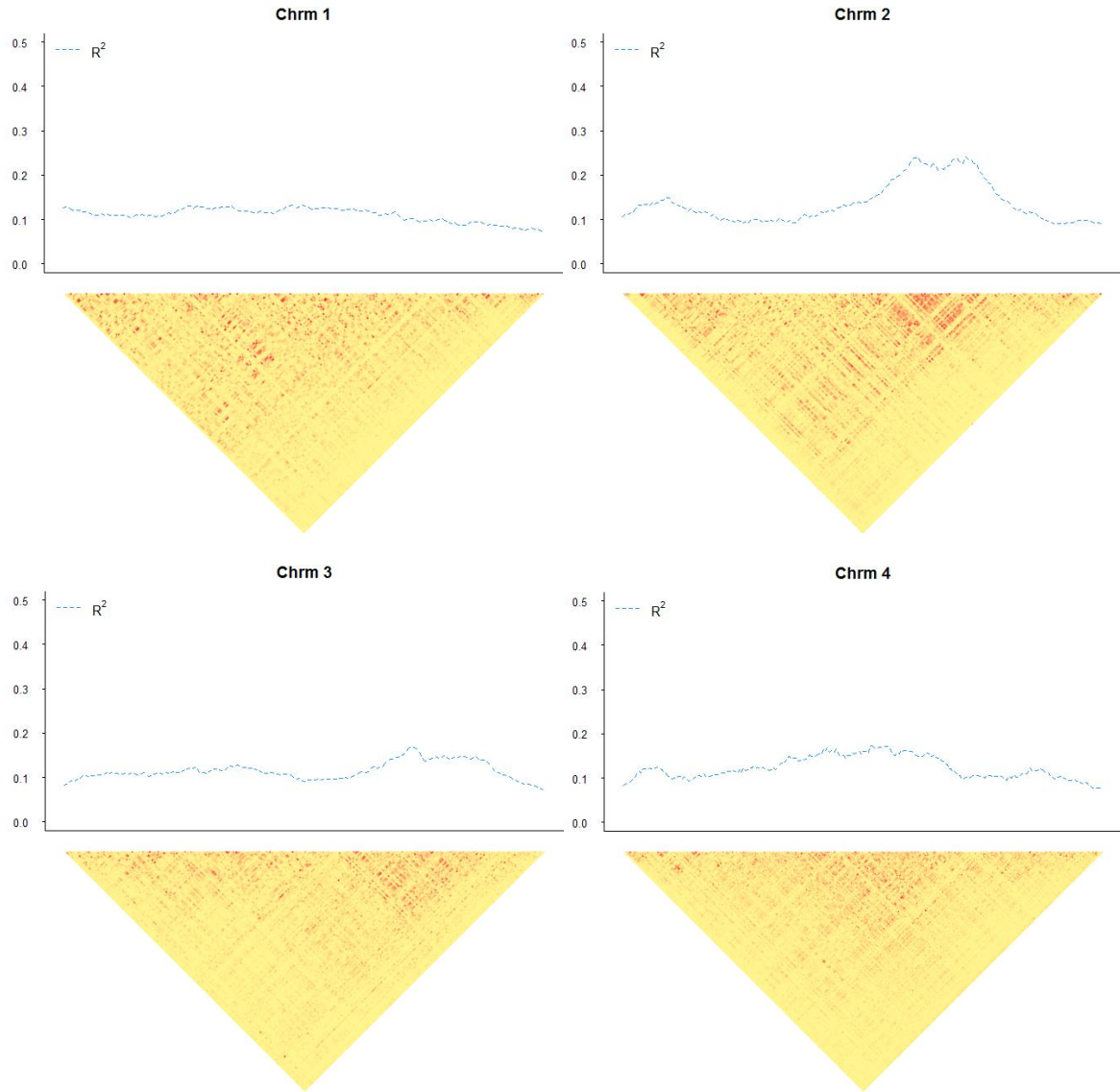
¹Manchester Institute of Biotechnology, University of Manchester, Manchester, UK

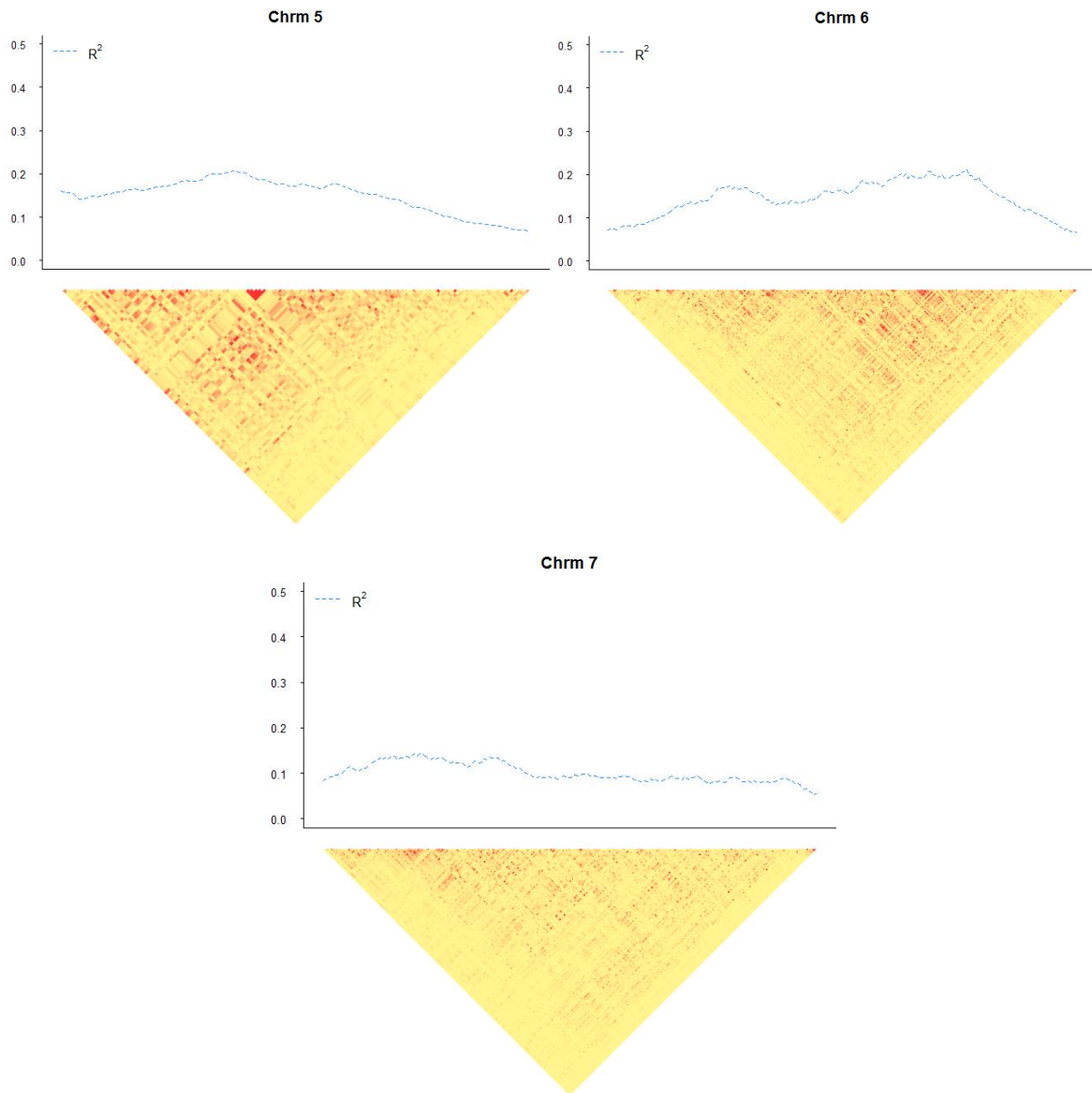
²Institute of Biological, Environmental and Rural Sciences, Aberystwyth University, Aberystwyth, UK

³CGIAR Consortium, CGIAR Consortium Office, 1000 Avenue Agropolis 34394, Montpellier, France

* **Correspondence:** Leif Skøt, E-mail: lfs@aber.ac.uk

1.1 Supplementary Figures





Supplementary Figure 1. Landscape plot and heatmaps of linkage disequilibrium in the *L. perenne* breeding populations. The landscape plots were based on a windows size of $n=40$, as described in Materials and Methods.