



# Effects of Ceftriaxone on Glial Glutamate Transporters in Wistar Rats Administered Sequential Ethanol and Methamphetamine

Yusuf S. Althobaiti<sup>1</sup>, Fahad S. Alshehri<sup>1</sup>, Atiah H. Almalki<sup>2</sup> and Youssef Sari<sup>1,2\*</sup>

<sup>1</sup> Department of Pharmacology and Experimental Therapeutics, College of Pharmacy and Pharmaceutical Sciences, University of Toledo, Toledo, OH, USA, <sup>2</sup> Department of Medicinal and Biological Chemistry, College of Pharmacy and Pharmaceutical Sciences, University of Toledo, Toledo, OH, USA

## OPEN ACCESS

### Edited by:

Ashok Kumar,  
University of Florida, USA

### Reviewed by:

Karen K. Szumlinski,  
University of California, Santa Barbara,  
USA

David Pubill,  
University of Barcelona, Spain

### \*Correspondence:

Youssef Sari  
youssef.sari@utoledo.edu

### Specialty section:

This article was submitted to  
Neuropharmacology,  
a section of the journal  
Frontiers in Neuroscience

**Received:** 23 May 2016

**Accepted:** 31 August 2016

**Published:** 21 September 2016

### Citation:

Althobaiti YS, Alshehri FS, Almalki AH  
and Sari Y (2016) Effects of  
Ceftriaxone on Glial Glutamate  
Transporters in Wistar Rats  
Administered Sequential Ethanol and  
Methamphetamine.  
*Front. Neurosci.* 10:427.  
doi: 10.3389/fnins.2016.00427

Methamphetamine (METH) is one of the psychostimulants that is co-abused with ethanol. Repeated exposure to high dose of METH has been shown to cause increases in extracellular glutamate concentration. We have recently reported that ethanol exposure can also increase the extracellular glutamate concentration and downregulate the expression of glutamate transporter subtype 1 (GLT-1). GLT-1 is a glial transporter that regulates the majority of extracellular glutamate. A Wistar rat model of METH and ethanol co-abuse was used to examine the expression of GLT-1 as well as other glutamate transporters such as cystine/glutamate exchanger (xCT) and glutamate aspartate transporter (GLAST). We also examined the body temperature in rats administered METH, ethanol or both drugs. We further investigated the effects of ceftriaxone (CEF), a  $\beta$ -lactam antibiotic known to upregulate GLT-1, in this METH/ethanol co-abuse rat model. After 7 days of either ethanol (6 g/kg) or water oral gavage, Wistar rats received either saline or METH (10 mg/kg i.p. every 2 h  $\times$  4), followed by either saline or CEF (200 mg/kg) posttreatment. METH administered alone decreased GLT-1 expression in the nucleus accumbens (NAc) and prefrontal cortex (PFC) and increased body temperature, but did not reduce either xCT or GLAST expression in ethanol and water-pretreated rats. Interestingly, ethanol and METH were found to have an additive effect on the downregulation of GLT-1 expression in the NAc but not in the PFC. Moreover, ethanol alone caused GLT-1 downregulation in the NAc and elevated body temperature compared to control. Finally, CEF posttreatment significantly reversed METH-induced hyperthermia, restored GLT-1 expression, and increased xCT expression. These findings suggest the potential therapeutic role of CEF against METH- or ethanol/METH-induced hyperglutamatergic state and hyperthermia.

**Keywords:** methamphetamine, GLT-1, hyperthermia, ethanol gavage, xCT, GLAST

## INTRODUCTION

Methamphetamine (METH) abusers frequently use alcohol with a higher risk of reaching alcohol intoxication (Furr et al., 2000). The prevalence of alcohol use disorder was found to be more than 75% among amphetamine-dependent subjects (Stinson et al., 2005). Exposure to a high dose of METH induces depletion of dopamine and serotonin at the nerve terminals (Ricaurte et al., 1980, 1982; Seiden et al., 1988; Hirata et al., 1995; Cass et al., 2006) and increases extracellular

glutamate concentration in rat striatum (Nash and Yamamoto, 1992; Stephans and Yamamoto, 1994). Repeated exposure to higher dose of amphetamine has also been shown to increase extracellular glutamate concentration in the nucleus accumbens (NAc) and the ventral tegmental area (VTA) in rats (Xue et al., 1996). Although, it is known that repeated METH exposure can increase extracellular glutamate concentration, there is less known about its effect on glutamate transporters. In general, these transporters are responsible for clearing extracellular glutamate concentration to maintain glutamate homeostasis. Among these transporters, glutamate transporter 1 (GLT-1; human homolog is excitatory amino acid transporter 2, EAAT2) plays a major role in clearing the majority of the extracellular glutamate concentration (Ginsberg et al., 1995; Rothstein et al., 1995; Danbolt, 2001; Mitani and Tanaka, 2003). Importantly, chronic ethanol exposure was found to reduce GLT-1 expression (Alhaddad et al., 2014b; Aal-Aaboda et al., 2015; Goodwani et al., 2015) and increase extracellular glutamate concentration in the NAc (Ding et al., 2013; Das et al., 2015; Pati et al., 2016). Since repeated exposure to high dose of METH can increase extracellular glutamate concentration (Halpin et al., 2014), we investigated in this study for any potential additive effect of ethanol and METH exposure on GLT-1 expression as well as other glial glutamate transporters such as cystine/glutamate transporter (xCT) and glutamate aspartate transporter (GLAST) in the NAc and PFC. The NAc is a brain region that is involved in the rewarding and reinforcing effects of drugs of abuse (Koob and Bloom, 1988; Wise and Rompré, 1989; Bardo, 1998; Koob et al., 1998). The NAc receives glutamatergic inputs from the PFC as well as other brain regions (Kelley et al., 1982; Phillipson and Griffiths, 1985). In this study, we examined the effect of ceftriaxone (CEF) posttreatment on GLT-1, xCT, and GLAST expression in the NAc and PFC in rats that were exposed to repeated high-dose METH. CEF is known to increase GLT-1 expression in several brain regions (Miller et al., 2008; Sari et al., 2009, 2013) and can normalize extracellular glutamate concentration in the NAc in cocaine and ethanol-seeking rat models (Trantham-Davidson et al., 2012; Das et al., 2015). CEF was also shown to reduce ethanol intake and cocaine seeking, in part, through upregulation of GLT-1 and xCT expression in the NAc and PFC (Sari et al., 2009, 2011; Knackstedt et al., 2010;

Fischer et al., 2013; Alhaddad et al., 2014a; Rao and Sari, 2014). It is noteworthy that repeated exposure to high dose of METH was found to cause hyperthermia (Chan et al., 1994; Lan et al., 1998; Ishigami et al., 2003). Importantly, CEF was also revealed to reduce morphine-induced hyperthermia (Rawls et al., 2007). Thus, we have investigated the effects of CEF on METH-induced hyperthermia. We administered CEF after ethanol and METH exposure for clinical relevance.

## MATERIALS AND METHODS

### Subjects

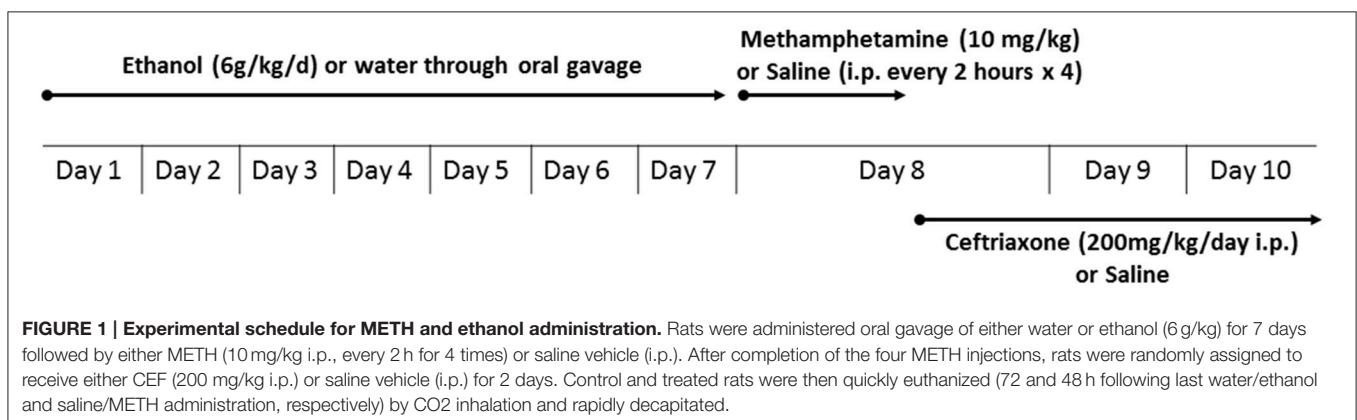
Male Wistar rats, weighing 200–300 g at the beginning of the study, were obtained from Harlan, Inc. (Indianapolis, IN). Rats were single-housed in standard plastic cages with controlled temperature (21°C) and humidity (30%) on 12:12 light-dark cycle and were allowed to habituate to these conditions prior to the experiments. Rats had *ad libitum* food and water throughout the experimental procedure, except 2 h fasting prior to each oral gavage administration. Animal experimental procedures were approved by the Institutional Animal Care and Use Committee of The University of Toledo in accordance with the guidelines of the Institutional Animal Care and Use Committee of the National Institutes of Health and the Guide for the Care and Use of Laboratory Animals (Institute of Laboratory Animal Resources, Commission on Life Sciences, 1996).

### Drugs

(+) METH hydrochloride was purchased from Sigma-Aldrich (St. Louis, MO). CEF (Sandoz Inc., Princeton, NJ) was purchased from The University of Toledo's pharmacy. Saline solution (0.9% NaCl) was used to dissolve either (+) METH or CEF. Ethanol (95%; Decon Labs, Inc.) was diluted in water.

### Experimental Design

An experimental schedule is illustrated in **Figure 1**. Rats were administered oral gavage of either water or ethanol (6 g/kg) for 7 days, followed by either METH (10 mg/kg, i.p.) or saline vehicle (i.p.). We first orally gavaged the rats with ethanol in order to initially induce a reduction in GLT-1 expression and glutamate uptake, as it was performed in recent study from our laboratory (Das et al., 2015); we then followed with METH i.p.



injections to further reduce glutamate uptake. After completion of the four METH i.p. injections, rats were randomly assigned to receive either CEF (200 mg/kg i.p.) or saline vehicle (i.p.) for 2 days; control and experimental groups have been summarized in **Table 1**. The rationale for testing repeated high dose of METH (10 mg/kg i.p. every 2 h  $\times$  4) exposure was chosen based on previous studies that showed neurotoxicity and elevation of extracellular glutamate concentration in rat brains (Bowyer et al., 1994; Hirata et al., 1995; Yamamoto and Zhu, 1998; Mark et al., 2004, 2007). The rationale for testing the ethanol binge gavage paradigm was based on recent studies from our laboratory and others (Faingold, 2008; Abulseoud et al., 2014; Das et al., 2016). Control and treated rats were then quickly euthanized by CO<sub>2</sub> inhalation and rapidly decapitated. Brains were then extracted and immediately frozen in dry ice and stored at  $-80^{\circ}\text{C}$ . The PFC and NAc were micropunched using a cryostat apparatus as described in a previous study from our laboratory (Sari and Sreemantula, 2012). Rat Brain Stereotaxic Atlas was used to identify the selected structures (PFC and NAc) (Paxinos and Watson, 2007).

## Western Blot

The Western blot procedure was performed as previously described (Sari et al., 2009). Briefly, brain tissue was lysed in lysis buffer (50 mM Tris-HCl, 150 mM NaCl, 1 mM EDTA, 0.5% NP-40, 1% Triton, 0.1% SDS) containing a protease inhibitor cocktail. A Bio-Rad protein assay method was used to determine total protein content in the tissue extracts (Bio-Rad, Hercules, CA, USA). The extracted proteins were loaded onto 10–20% tris-glycine gel. After separation, proteins were transferred electrophoretically from the gel onto the PVDF membranes. The membranes were then blocked using 3% milk in Tris-buffered saline Tween 20 for 30 min. Guinea pig anti-GLT-1 (1:5000 dilution; Millipore Bioscience Research Reagents), rabbit anti-xCT antibody (1:1000 dilution; Novus), rabbit anti-GLAST (1:5000 dilution; Abcam), or mouse anti  $\beta$ -tubulin antibody (1:5000 dilution; Covance) was then added to the blocking buffer, and the membrane was incubated overnight at  $4^{\circ}\text{C}$ . The membrane was then washed and incubated with horseradish peroxidase-labeled (HRP) anti-Guinea pig, anti-rabbit, or anti-mouse secondary antibody (1:5000). A chemiluminescent kit (SuperSignal West Pico) was used to incubate the membrane for protein detection. Subsequently, the membrane was exposed to Kodak BioMax MR films (Thermo Fisher Scientific). The films were then developed using an SRX-101A machine by Konica

Minolta Medical & Graphic, Inc. The blots for each protein were digitized, and densitometric analysis was obtained using an MCID software (Imaging Research, Inc.). Data were calculated as ratios of GLT-1/ $\beta$ -tubulin, xCT/ $\beta$ -tubulin, and GLAST/ $\beta$ -tubulin. The control group (Water-Saline-Saline) was included with the drug treatment groups each time the 10-well gel was run. The control group was set arbitrary as 100% and the changes in protein expression of the remaining five groups were obtained relative to the control group in that particular gel. The expression of proteins was consistent between control and drug treatment groups (six groups) in each 10-well gel. This calculation method has been used in several studies from ours and others (Li et al., 2003; Raval et al., 2003; Miller et al., 2008; Zhang and Tan, 2011; Simões et al., 2012; Devoto et al., 2013; Goodwani et al., 2015; Hakami et al., 2016).

## Body Temperature Measurement

The body temperature was measured rectally using digital thermometer (Thermalert TH-5, Physitemp, NJ, USA) at three time points to minimize handling following METH exposure: at baseline, after the last METH injection (Time 0) when the rats were randomly assigned to receive either saline or CEF, and finally 12 h after last METH injection.

## Statistical Analysis

Two-way ANOVA (Pretreatment  $\times$  Posttreatment) was used to analyze immunoblot data. Newman-Keuls multiple comparisons test was used when significant interaction or significant main effect was revealed using GraphPad Prism. Mixed-model factorial ANOVA [Time  $\times$  Pretreatment  $\times$  Posttreatment, with repeated measures on the time factor (Baseline, 0, 12 h), with Pretreatment and Posttreatment as the between-subjects factor] was used to analyze body temperature data using SPSS software. All statistical tests were based on  $p < 0.05$  level of significance.

## RESULTS

### Effects of METH Administered Alone or with Ethanol As Well As Effects of CEF Posttreatment on GLT-1 Expression in the NAc And PFC

This study investigated the effect of METH on GLT-1 expression in the NAc and PFC 48 h following the last METH i.p. injection

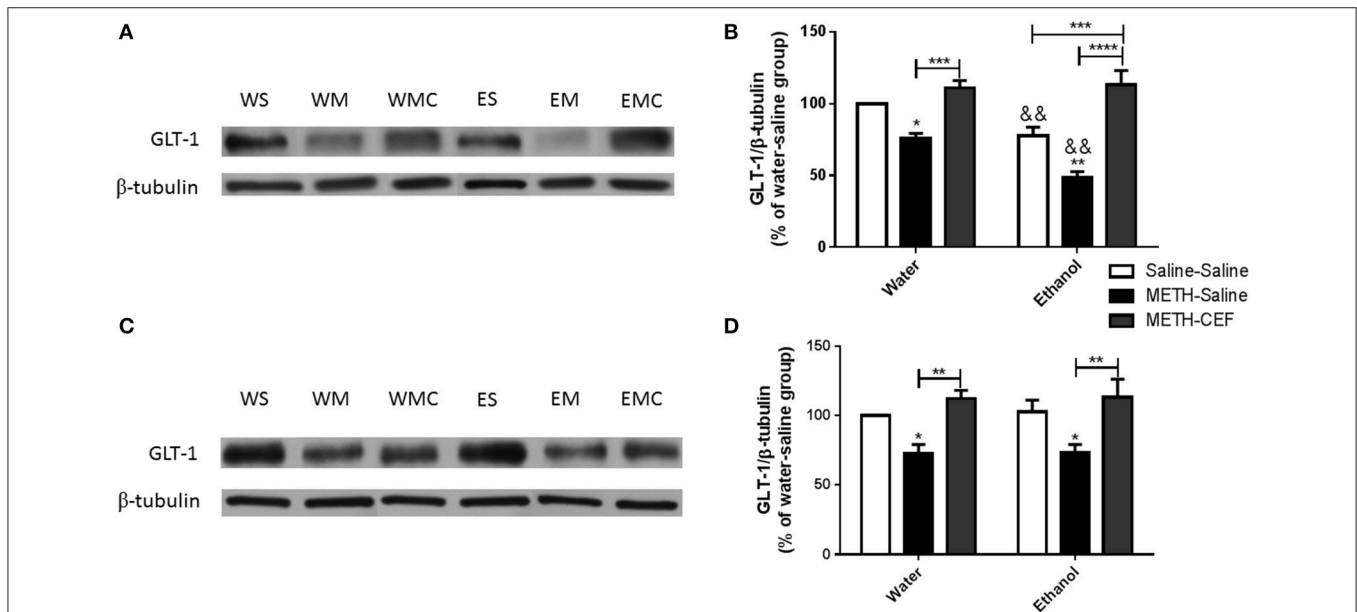
**TABLE 1 | Experimental groups according to the administration of water or ethanol oral gavage, METH or saline, as well as CEF or saline.**

Group	Day 1–7	Day 8		Day 8–10	
		Drug	Dose	Drug	Dose
1- Water-Saline-Saline	Water	Saline	(1 ml/kg, i.p. every 2 h $\times$ 4)	Saline	(1 ml/kg, i.p. every day $\times$ 3)
2- Water-METH-Saline	Water	METH	(10 mg/kg, i.p. every 2 h $\times$ 4)	Saline	(1 ml/kg, i.p. every day $\times$ 3)
3- Water-METH-CEF	Water	METH	(10 mg/kg, i.p. every 2 h $\times$ 4)	CEF	(200 mg/kg, i.p. every day $\times$ 3)
4- Ethanol-Saline-Saline	Ethanol	Saline	(1 ml/kg, i.p. every 2 h $\times$ 4)	Saline	(1 ml/kg, i.p. every day $\times$ 3)
5- Ethanol-METH-Saline	Ethanol	METH	(10 mg/kg, i.p. every 2 h $\times$ 4)	Saline	(1 ml/kg, i.p. every day $\times$ 3)
6- Ethanol-METH-CEF	Ethanol	METH	(10 mg/kg, i.p. every 2 h $\times$ 4)	CEF	(200 mg/kg, i.p. every day $\times$ 3)

in Wistar rats. Two-way ANOVA revealed a significant effect of posttreatment in the NAc [ $F_{(2, 30)} = 39.09, p < 0.0001$ ] and PFC [ $F_{(2, 30)} = 14.10, p < 0.0001$ ], significant effect of oral gavage pretreatment in the NAc [ $F_{(1, 30)} = 11.69, p < 0.0018$ ] but not PFC [ $F_{(1, 30)} = 0.05634, p = 0.8140$ ], and significant interaction between posttreatment and oral gavage pretreatment in the NAc [ $F_{(2, 30)} = 3.949, p = 0.0300$ ] but not in the PFC [ $F_{(2, 30)} = 0.009251, p = 0.9908$ ]. Newman-Keuls multiple comparisons test showed a significant increase in GLT-1 expression in METH-CEF-treated rats compared to METH-Saline-treated rats in the NAc [water group ( $p < 0.001$ ) and ethanol group ( $p < 0.0001$ ; **Figures 2A,B**)] and PFC [water group ( $p < 0.01$ ) and ethanol group ( $p < 0.01$ ; **Figures 2C,D**)]. Moreover, statistical analyses showed a significant downregulation of GLT-1 expression in the NAc [water group ( $p < 0.05$ ) and ethanol group ( $p < 0.01$ ; **Figure 2B**)] and in the PFC [water group ( $p < 0.05$ ) and ethanol group ( $p < 0.05$ ; **Figure 2D**)] of the METH-Saline group compared to the corresponding saline control group. Alternatively, *post-hoc* analyses showed a significant decrease in GLT-1 expression in Ethanol-Saline-Saline compared to Water-Saline-Saline in the NAc ( $p < 0.01$ ; **Figure 2B**). Interestingly, GLT-1 expression was significantly decreased in Ethanol-METH-Saline-treated rats compared to Water-METH-Saline-treated rats in the NAc ( $p < 0.01$ ; **Figure 2B**).

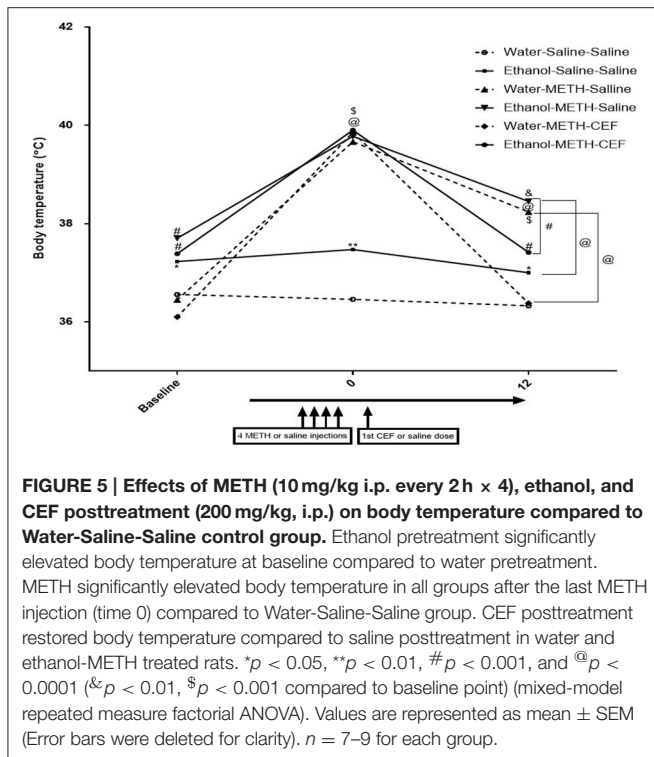
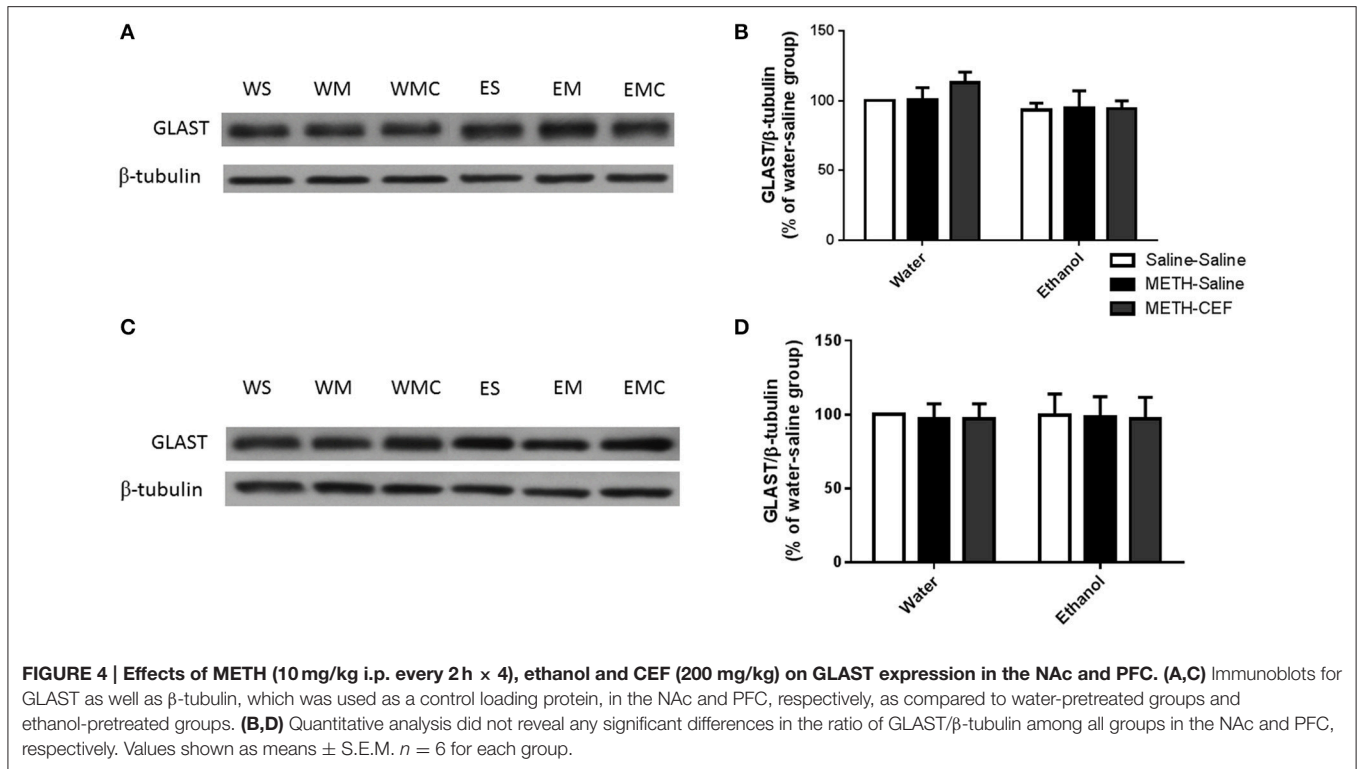
## Effects of CEF Treatment on xCT Expression in the NAc and PFC of Groups Administered METH Alone or METH and Ethanol

We further investigated the effect of METH on xCT expression in the NAc and PFC 48 h following the last METH i.p. injection in Wistar rats. Two-way ANOVA revealed a significant effect of posttreatment in the NAc [ $F_{(2, 30)} = 12.92, p < 0.0001$ ] and PFC [ $F_{(2, 30)} = 11.01, p < 0.001$ ], no significant effect of oral gavage pretreatment in the NAc [ $F_{(1, 30)} = 0.04864, p = 0.8269$ ] or PFC [ $F_{(1, 30)} = 0.3730, p = 0.5460$ ], and no significant interaction between posttreatment and oral gavage pretreatment in the NAc [ $F_{(2, 30)} = 0.05490, p = 0.9467$ ] or PFC [ $F_{(2, 30)} = 0.1945, p = 0.8243$ ]. Newman-Keuls multiple comparisons test showed a significant increase in xCT expression in METH-CEF-treated rats compared to METH-Saline and Saline-Saline treated rats in the NAc [water group ( $p < 0.05$ ) and ethanol group ( $p < 0.05$ ; **Figures 3A,B**)] and PFC [water group ( $p < 0.05$ ) and ethanol group ( $p < 0.05$ ; **Figures 3C,D**)]. However, statistical analyses did not show any significant change in xCT expression in the NAc [in water group ( $p > 0.05$ ) or ethanol group ( $p > 0.05$ ; **Figure 3B**)] and PFC [water group ( $p > 0.05$ ) or ethanol group ( $p > 0.05$ ; **Figure 3D**)] of the METH-Saline group compared to the corresponding saline control group.



**FIGURE 2 | Effects of METH (10 mg/kg i.p. every 2 h × 4), ethanol and CEF (200 mg/kg) on GLT-1 expression in the NAc and PFC. (A,C)** Immunoblots for GLT-1 as well as  $\beta$ -tubulin, which was used as a control loading protein, in the NAc and PFC, respectively, as compared to water-pretreated groups and ethanol-pretreated groups. **(B,D)** Quantitative analysis revealed a significant increase in the ratio of GLT-1/ $\beta$ -tubulin in METH-CEF-treated (WMC or EMC) rats compared to the METH-Saline-treated rats in the water (WM) and the ethanol (EM) groups, in the NAc and PFC, respectively. Significant downregulation of GLT-1 expression was revealed in the METH-Saline-treated groups compared to control in water- and ethanol-treated groups in the NAc and PFC. Significant downregulation of GLT-1 expression was revealed in ethanol-Saline-Saline (ES) and ethanol-METH-Saline (EM) groups compared to its corresponding water control groups in the NAc, but not in the PFC. No significant difference in GLT-1 expression was revealed in water-METH-CEF-treated (WMC) rats compared to water control groups. However, a significant increase in GLT-1 expression was found in the Ethanol-METH-CEF (EMC) group compared to ethanol control (ES) group in the NAc, but not in the PFC. \* $p < 0.05$ , \*\* $p < 0.01$  (or &&, for comparison between ethanol and its corresponding water control groups), \*\*\* $p < 0.001$ , and \*\*\*\* $p < 0.0001$ . Values shown as means  $\pm$  S.E.M.  $n = 6$  for each group.





4 h) compared to rats that were euthanized 48 h after the last METH injection in our report. The GLT-1 expression was not changed in the PFC at the first two time points tested. However, GLT-1 expression was then increased after 2 h of METH injection (~250% of control) and then decreased dramatically to reach 140% of control after 4 h of METH injection. This previous report did not further investigate GLT-1 expression beyond 4 h of METH administration. The pattern of changes in GLT-1 expression presented in this previous report suggests a transient increase of GLT-1 that might be followed by a reduction in GLT-1 expression. By contrast, in our study, we have used repeated high dose METH, which is well known to produce neurotoxicity and hyperthermia (Sonsalla et al., 1989; Bowyer et al., 1994; Halpin and Yamamoto, 2012). This neurotoxic dosing paradigm of METH produced a comparable neurotoxicity to other studies that have used a very high dose of METH 50 mg/kg 2–3 times per day for 4 days (Bittner et al., 1981; Ricaurte et al., 1982). However, previous study has investigated a single dose of METH in order to produce neurotoxicity and hyperthermia comparable to the dosing paradigm used in this study (Fukumura et al., 1998). The least effective dose that produced neurotoxicity and hyperthermia was 10 times higher than the dose used by Qi et al. (2012) (i.e., 20 mg/kg), while doses that produced a comparable neurotoxicity and hyperthermia are 30 and 40 mg/kg (Fukumura et al., 1998; Qi et al., 2012).

The GLT-1 is a glial glutamate transporter that plays a critical role in clearing the majority of extracellular glutamate to maintain glutamate homeostasis (Ginsberg et al., 1995; Rothstein et al., 1995, 1996; Danbolt, 2001; Mitani and Tanaka, 2003). The METH-induced downregulation of GLT-1 expression could be

due to the fact that binge METH exposure induced hepatotoxicity in rats, with subsequent elevation in plasma and brain ammonia (Halpin and Yamamoto, 2012). Chronic ammonia exposure for at least 48 h was shown to decrease glutamate uptake in cultured astrocytes due to a possible decrease in the expression of glutamate transporters (Bender and Norenberg, 1996). It has also been shown that ammonia is responsible for GLT-1 downregulation in brains of a rat model with acute liver failure (Knecht et al., 1997; Chan and Butterworth, 1999). Moreover, rats treated with ammonium acetate develop a significant downregulation in GLT-1 expression compared to control rats (Norenberg et al., 1997). Therefore, downregulation of GLT-1 expression found in this study could be due to elevation in plasma and brain ammonia caused by METH exposure. Further studies are warranted to determine the concentration of ammonia in the plasma and brain of rats exposed to repeated doses of METH.

A METH-induced decrease in GLT-1 expression in the NAc and PFC was restored by CEF posttreatment in both ethanol and water-pretreated rats. CEF is known to upregulate GLT-1 expression in disease and naïve animal models (Rothstein et al., 2005; Miller et al., 2008; Ramos et al., 2010). Since METH caused GLT-1 downregulation, we further investigated GLT-1 expression in ethanol and water pretreated rats to explore whether there is any additive effect of ethanol and METH in this protein. The present data revealed that METH exacerbates the reduction in GLT-1 expression in ethanol-pretreated rats compared to water-pretreated rats in the NAc, but not in the PFC. This indicates that there is no additive effect of ethanol on GLT-1 expression in the PFC, which is consistent with our recent findings demonstrated that free choice exposure to ethanol does not reduce GLT-1 expression in the PFC (Sari et al., 2013; Alhaddad et al., 2014b). Moreover, GLT-1 expression was downregulated in the NAc following saline treatment in the ethanol group compared to the water group. This is in accordance with recent findings demonstrated that chronic ethanol exposure decreases GLT-1 expression and increases extracellular glutamate concentration in the NAc (Das et al., 2015).

Although the mechanism of ethanol-induced downregulation of GLT-1 is not known, studies from our laboratory showed that ethanol decreases phosphorylation of Akt (Alhaddad et al., 2014b; Goodwani et al., 2015). Certain studies, however, have reported contradicting findings regarding the effects of ethanol exposure on GLT-1 expression. For example, GLT-1 expression was not altered following intermittent ethanol exposure (Pati et al., 2016) or continuous ethanol exposure for 8 weeks in female P rats (Ding et al., 2013). These contradictory results could be due to the differences in ethanol exposure paradigm and study design. The report by Pati et al. (2016) used intermittent ethanol exposure, while in our present study, we have used repeated daily ethanol exposure, which has been shown to increase extracellular glutamate concentration shortly after the last ethanol exposure in different brain regions such as the VTA, hippocampus, NAc, PFC, and striatum (Rossetti and Carboni, 1995; Dahchour and Witte, 1999; Dahchour and De Witte, 2000; Melendez et al., 2005; Kapasova and Szumlinski, 2008; Ding et al., 2012; Hermann et al., 2012) and decrease GLT-1 expression and/or glutamate clearance (Melendez et al., 2005; Ding et al., 2012; Aal-Aaboda et al.,

2015; Das et al., 2015; Goodwani et al., 2015). Alternatively, the report by Ding et al. (2013) used free choice continuous ethanol exposure for 8 weeks (compared to oral gavage of ethanol for 7 days in this current study). Ding et al. (2013) noted a trend of decrease in GLT-1 expression that was suggested to be masked by high variations in samples. Moreover, this previous report used female rats, as opposed to male rats that showed a decrease in GLT-1 expression following ethanol exposure (Alhaddad et al., 2014b; Goodwani et al., 2015). Further studies are needed to investigate different gender responses to ethanol exposure and consequent changes in GLT-1 expression.

We also tested xCT, a glial protein that exchanges intracellular glutamate for extracellular cystine to maintain glutamate homeostasis (Bannai and Kitamura, 1980; Baker et al., 2002). However, we did not find any downregulation of xCT expression following METH treatment in either ethanol or water-pretreated rats. Importantly, CEF upregulated xCT expression in the NAc and PFC of ethanol and water pretreated rats, which is consistent with studies from our laboratory and others (Lewerenz et al., 2009; Knackstedt et al., 2010; Alhaddad et al., 2014a; Rao and Sari, 2014). CEF-induced upregulation of xCT expression might be another mechanism that modulates glutamate homeostasis to alleviate METH effects. In addition, xCT has been shown to facilitate cystine uptake with the subsequent synthesis of glutathione (Sato et al., 1999; Lewerenz et al., 2006). An *in vitro* study showed that CEF-induced upregulation of xCT expression was associated in part with increased glutathione concentration, which is independent of GLT-1 upregulation (Lewerenz et al., 2009). It is noteworthy that several studies indicated that METH can cause oxidative stress in different brain regions (Cubells et al., 1994; Açıkgöz et al., 1998; Yamamoto and Zhu, 1998; Gluck et al., 2001; Ramirez et al., 2009). Furthermore, glutathione was found to be reduced in the striatum following repeated high doses of METH (Moszczynska et al., 1998). As a result, the CEF-induced increase in xCT expression may eventually improve glutathione synthesis.

Furthermore, we did not find any changes in GLAST expression in the NAc and PFC in either ethanol or water-pretreated rats. In accordance, ethanol exposure and/or CEF treatment did not significantly reduce GLAST expression (Alhaddad et al., 2014b; Hakami et al., 2016). Studies suggested that GLAST is highly expressed in the cerebellum and predominantly regulates glutamate uptake as compared to forebrain regions, including the PFC and NAc. However, GLT-1 is predominant in the forebrain. The differential predominance of GLAST vs. GLT-1 in the PFC and NAc might be a key factor involving the effects of ethanol and METH co-abuse in the expression of these transporters. Studies are warranted to investigate the differential effects of these glial transporters in an ethanol and METH co-abuse model.

METH significantly elevated body temperature in both ethanol and water-pretreated rats compared to saline, which is consistent with previous reports (Cass et al., 2006; Shioda et al., 2010; Halpin and Yamamoto, 2012). The present data showed that CEF posttreatment significantly reversed the increase in body temperature compared to saline when measured 12 h following the last METH dose. Although the rapid onset of action

of CEF on body temperature is unclear, studies demonstrated that a single dose of CEF can increase the activity of GLT-1 and improve the survival of neurons (Thöne-Reineke et al., 2008). In fact, acute administration of CEF has many effects, including an anti-inflammatory response and analgesic action (Wei et al., 2012; Macaluso et al., 2013). Further studies are warranted to investigate the acute effects of CEF on the glutamatergic system and body temperature. The mechanism of action of CEF in reversing hyperthermia is unknown, but is most likely through its ability to upregulate GLT-1 and improve glutamate uptake. This is in line with a previous report by Rawls and colleagues in which CEF reversed morphine-induced hyperthermia (Rawls et al., 2007). This latter study demonstrates that CEF's inhibition of hyperthermia was prevented by administering glutamate uptake blocker (TBOA), which suggests that upregulation of GLT-1 expression may be critical in the attenuation of hyperthermia. It is unclear whether the normalizing effect of CEF on body temperature might be associated with upregulation of GLT-1 and reduced extracellular glutamate concentration in central reward brain regions such as the NAc and PFC. However, it is suggested that glutamate might be implicated in thermoregulation, since treatment with glutamate receptor antagonists attenuates the increase in body temperature in animal models (Madden and Morrison, 2003; Nakamura et al., 2004; Cao and Morrison, 2006; Nakamura and Morrison, 2008). Importantly, the NAc and PFC were found to be implicated in thermoregulation (Tseng et al., 1980; Hori et al., 1984; Shibata et al., 1988). Changes in body temperature and heat production were also found when functional ablation of PFC was applied (Shibata et al., 1981, 1985). In addition, a recent study has shown that microinjections of METH into the PFC evoked measures of non-shivering thermogenesis (Hassan et al., 2015). Further studies are warranted to explore any possible associative effects between thermoregulation and glutamate homeostasis in an ethanol and METH co-abuse animal model and to investigate the key brain regions involved in this mechanism.

## REFERENCES

- Aal-Aaboda, M., Alhaddad, H., Osowik, F., Nauli, S. M., and Sari, Y. (2015). Effects of (R)-(-)-5-methyl-1-nicotinoyl-2-pyrazoline on glutamate transporter 1 and cysteine/glutamate exchanger as well as ethanol drinking behavior in male, alcohol-preferring rats. *J. Neurosci. Res.* 93, 930–937. doi: 10.1002/jnr.23554
- Abulseoud, O. A., Camsari, U. M., Ruby, C. L., Kasasbeh, A., Choi, S., and Choi, D.-S. (2014). Attenuation of ethanol withdrawal by ceftriaxone-induced upregulation of glutamate transporter EAAT2. *Neuropsychopharmacology* 39, 1674–1684. doi: 10.1038/npp.2014.14
- Açıköz, O., Gönenç, S., Kayatekin, B. M., Uysal, N., Pekçetin, Ç., Şemin, İ., et al. (1998). Methamphetamine causes lipid peroxidation and an increase in superoxide dismutase activity in the rat striatum. *Brain Res.* 813, 200–202. doi: 10.1016/S0006-8993(98)01020-8
- Alhaddad, H., Das, S. C., and Sari, Y. (2014a). Effects of ceftriaxone on ethanol intake: a possible role for xCT and GLT-1 isoforms modulation of glutamate levels in P rats. *Psychopharmacology* 231, 4049–4057. doi: 10.1007/s00213-014-3545-y
- Alhaddad, H., Kim, N. T., Aal-Aaboda, M., Althobaiti, Y. S., Leighton, J., Boddu, S. H., et al. (2014b). Effects of MS-153 on chronic ethanol consumption and GLT1 modulation of glutamate levels in male alcohol-preferring rats. *Front. Behav. Neurosci.* 8:366. doi: 10.3389/fnbeh.2014.00366
- Baker, D. A., Xi, Z.-X., Shen, H., Swanson, C. J., and Kalivas, P. W. (2002). The origin and neuronal function of *in vivo* nonsynaptic glutamate. *J. Neurosci.* 22, 9134–9141.
- Bannai, S., and Kitamura, E. (1980). Transport interaction of L-cystine and L-glutamate in human diploid fibroblasts in culture. *J. Biol. Chem.* 255, 2372–2376.
- Bardo, M. T. (1998). Neuropharmacological mechanisms of drug reward: beyond dopamine in the nucleus accumbens. *Crit. Rev. Neurobiol.* 12, 37–67. doi: 10.1615/CritRevNeurobiol.v12.i1-2.30
- Bender, A. S., and Norenberg, M. D. (1996). Effects of ammonia on L-glutamate uptake in cultured astrocytes. *Neurochem. Res.* 21, 567–573. doi: 10.1007/BF02527755
- Bittner, S. E., Wagner, G. C., Aigner, T. G., and Seiden, L. S. (1981). Effects of a high-dose treatment of methamphetamine on caudate dopamine and anorexia in rats. *Pharmacol. Biochem. Behav.* 14, 481–486. doi: 10.1016/0091-3057(81)90306-3
- Bowyer, J. F., Davies, D. L., Schmued, L., Broening, H. W., Newport, G. D., Slikker, W., et al. (1994). Further studies of the role of hyperthermia in methamphetamine neurotoxicity. *J. Pharmacol. Exp. Ther.* 268, 1571–1580.
- Cao, W.-H., and Morrison, S. F. (2006). Glutamate receptors in the raphe pallidus mediate brown adipose tissue thermogenesis evoked by activation

## AUTHOR CONTRIBUTIONS

YA—Participated in study design and conceptualization, collected and analyzed data, helped with data interpretation, and drafted the manuscript. FA—Helped with data collection, analysis, and interpretation, and approved the final version of the manuscript. AA—Helped with data collection and approved the final version of the manuscript. YS—Conceptualized and designed the study, revised the manuscript for intellectual content, and approved the final version.

## ACKNOWLEDGMENTS

The work was supported in part by Award Number R01AA019458 (YS) from the National Institutes on Alcohol Abuse and Alcoholism and fund provided by The University of Toledo. The authors would like to thank Sujana Das, Alqassem Hakami, and Fawaz Alasmari for contribution in the experiments. The authors would like to thank Dr. Bryan Yamamoto for his suggestions about the dose of methamphetamine tested in this study. The authors would like to thank Charisse Montgomery for editing this manuscript.



- of dorsomedial hypothalamic neurons. *Neuropharmacology* 51, 426–437. doi: 10.1016/j.neuropharm.2006.03.031
- Cass, W. A., Smith, M. P., and Peters, L. E. (2006). Calcitriol protects against the dopamine- and serotonin-depleting effects of neurotoxic doses of methamphetamine. *Ann. N.Y. Acad. Sci.* 1074, 261–271. doi: 10.1196/annals.1369.023
- Chan, H., and Butterworth, R. F. (1999). Evidence for an astrocytic glutamate transporter deficit in hepatic encephalopathy. *Neurochem. Res.* 24, 1397–1401. doi: 10.1023/A:1022532623281
- Chan, P., Chen, J. H., Lee, M. H., and Deng, J. F. (1994). Fatal and nonfatal methamphetamine intoxication in the intensive care unit. *Clin. Toxicol.* 32, 147–155. doi: 10.3109/15563659409000444
- Cubells, J. F., Rayport, S., Rajendran, G., and Sulzer, D. (1994). Methamphetamine neurotoxicity involves vacuolation of endocytic organelles and dopamine-dependent intracellular oxidative stress. *J. Neurosci.* 14, 2260–2271.
- Dahchour, A., and De Witte, P. (1999). Effect of repeated ethanol withdrawal on glutamate microdialysis in the hippocampus. *Alcoholism* 23, 1698–1703. doi: 10.1111/j.1530-0277.1999.tb04063.x
- Dahchour, A., and De Witte, P. (2000). Taurine blocks the glutamate increase in the nucleus accumbens microdialysate of ethanol-dependent rats. *Pharmacol. Biochem. Behav.* 65, 345–350. doi: 10.1016/S0091-3057(99)00197-5
- Danbolt, N. C. (2001). Glutamate uptake. *Prog. Neurobiol.* 65, 1–105. doi: 10.1016/S0301-0082(00)00067-8
- Das, S. C., Althobaiti, Y. S., Alshehri, F. S., and Sari, Y. (2016). Binge ethanol withdrawal: effects on post-withdrawal ethanol intake, glutamate–glutamine cycle and monoamine tissue content in P rat model. *Behav. Brain Res.* 303, 120–125. doi: 10.1016/j.bbr.2016.01.052
- Das, S. C., Yamamoto, B. K., Hristov, A. M., and Sari, Y. (2015). Ceftriaxone attenuates ethanol drinking and restores extracellular glutamate concentration through normalization of GLT-1 in nucleus accumbens of male alcohol-preferring rats. *Neuropharmacology* 97, 67–74. doi: 10.1016/j.neuropharm.2015.05.009
- Devoto, V. P., Bogetti, M., and de Plazas, S. F. (2013). Developmental and hypoxia-induced cell death share common ultrastructural and biochemical apoptotic features in the central nervous system. *Neuroscience* 252, 190–200. doi: 10.1016/j.neuroscience.2013.07.065
- Ding, Z. M., Engleman, E. A., Rodd, Z. A., and McBride, W. J. (2012). Ethanol increases glutamate neurotransmission in the posterior ventral tegmental area of female wistar rats. *Alcoholism* 36, 633–640. doi: 10.1111/j.1530-0277.2011.01665.x
- Ding, Z. M., Rodd, Z. A., Engleman, E. A., Bailey, J. A., Lahiri, D. K., and McBride, W. J. (2013). Alcohol drinking and deprivation alter basal extracellular glutamate concentrations and clearance in the mesolimbic system of alcohol-preferring (P) rats. *Addict. Biol.* 18, 297–306. doi: 10.1111/adb.12018
- Faingold, C. L. (2008). The Majchrowicz binge alcohol protocol: an intubation technique to study alcohol dependence in rats. *Curr. Protoc. Neurosci.* Chapter 9:Unit 9.28. doi: 10.1002/0471142301.ns0928s44
- Fischer, K. D., Houston, A. C., and Rebec, G. V. (2013). Role of the major glutamate transporter GLT1 in nucleus accumbens core versus shell in cue-induced cocaine-seeking behavior. *J. Neurosci.* 33, 9319–9327. doi: 10.1523/JNEUROSCI.3278-12.2013
- Fukumura, M., Cappon, G. D., Pu, C., Broening, H. W., and Vorhees, C. V. (1998). A single dose model of methamphetamine-induced neurotoxicity in rats: effects on neostriatal monoamines and glial fibrillary acidic protein. *Brain Res.* 806, 1–7. doi: 10.1016/S0006-8993(98)00656-8
- Furr, C. D., Delva, J., and Anthony, J. C. (2000). The suspected association between methamphetamine (“ice”) smoking and frequent episodes of alcohol intoxication: data from the 1993 National Household Survey on Drug Abuse. *Drug Alcohol Depend.* 59, 89–93. doi: 10.1016/S0376-8716(99)00078-2
- Ginsberg, S. D., Martin, L. J., and Rothstein, J. D. (1995). Regional deafferentation down-regulates subtypes of glutamate transporter proteins. *J. Neurochem.* 65, 2800–2803. doi: 10.1046/j.1471-4159.1995.65062800.x
- Gluck, M. R., Moy, L. Y., Jayatilleke, E., Hogan, K. A., Manzano, L., and Sonsalla, P. K. (2001). Parallel increases in lipid and protein oxidative markers in several mouse brain regions after methamphetamine treatment. *J. Neurochem.* 79, 152–160. doi: 10.1046/j.1471-4159.2001.00549.x
- Goodwani, S., Rao, P. S., Bell, R. L., and Sari, Y. (2015). Amoxicillin and amoxicillin/clavulanate reduce ethanol intake and increase GLT-1 expression as well as AKT phosphorylation in mesocorticolimbic regions. *Brain Res.* 1622, 397–408. doi: 10.1016/j.brainres.2015.07.008
- Hakami, A. Y., Hammad, A. M., and Sari, Y. (2016). Effects of amoxicillin and augmentin on cystine-glutamate exchanger and glutamate transporter 1 isoforms as well as ethanol intake in alcohol-preferring rats. *Front. Neurosci.* 10:171. doi: 10.3389/fnins.2016.00171
- Halpin, L. E., and Yamamoto, B. K. (2012). Peripheral ammonia as a mediator of methamphetamine neurotoxicity. *J. Neurosci.* 32, 13155–13163. doi: 10.1523/JNEUROSCI.2530-12.2012
- Halpin, L. E., Northrop, N. A., and Yamamoto, B. K. (2014). Ammonia mediates methamphetamine-induced increases in glutamate and excitotoxicity. *Neuropsychopharmacology* 39, 1031–1038. doi: 10.1038/npp.2013.306
- Hassan, S. F., Zumut, S., Burke, P. G., McMullan, S., Cornish, J. L., and Goodchild, A. K. (2015). Comparison of noradrenaline, dopamine and serotonin in mediating the tachycardic and thermogenic effects of methamphetamine in the ventral medial prefrontal cortex. *Neuroscience* 295, 209–220. doi: 10.1016/j.neuroscience.2015.03.028
- Hermann, D., Weber-Fahr, W., Sartorius, A., Hoerst, M., Frischknecht, U., Tunc-Skarka, N., et al. (2012). Translational magnetic resonance spectroscopy reveals excessive central glutamate levels during alcohol withdrawal in humans and rats. *Biol. Psychiatry* 71, 1015–1021. doi: 10.1016/j.biopsych.2011.07.034
- Hirata, H., Ladenheim, B., Rothman, R. B., Epstein, C., and Cadet, J. L. (1995). Methamphetamine-induced serotonin neurotoxicity is mediated by superoxide radicals. *Brain Res.* 677, 345–347. doi: 10.1016/0006-8993(95)00218-F
- Hori, T., Shibata, M., Kiyohara, T., and Nakashima, T. (1984). Prefrontal cortical influences on behavioural thermoregulation and thermosensitive neurons. *J. Therm. Biol.* 9, 27–31. doi: 10.1016/0306-4565(84)90033-0
- Ishigami, A., Kubo, S.-I., Gotohda, T., and Tokunaga, I. (2003). The application of immunohistochemical findings in the diagnosis in methamphetamine-related death-two forensic autopsy cases. *J. Med. Invest.* 50, 112–116.
- Kapasova, Z., and Szumlinski, K. K. (2008). Strain Differences in alcohol-induced neurochemical plasticity: a role for accumbens glutamate in alcohol intake. *Alcoholism* 32, 617–631. doi: 10.1111/j.1530-0277.2008.00620.x
- Kelley, A., Domesick, V. B., and Nauta, W. (1982). The amygdalostriatal projection in the rat—an anatomical study by anterograde and retrograde tracing methods. *Neuroscience* 7, 615–630. doi: 10.1016/0306-4522(82)90067-7
- Knackstedt, L. A., Melendez, R. I., and Kalivas, P. W. (2010). Ceftriaxone restores glutamate homeostasis and prevents relapse to cocaine seeking. *Biol. Psychiatry* 67, 81–84. doi: 10.1016/j.biopsych.2009.07.018
- Knecht, K., Michalak, A., Rose, C., Rothstein, J. D., and Butterworth, R. F. (1997). Decreased glutamate transporter (GLT-1) expression in frontal cortex of rats with acute liver failure. *Neurosci. Lett.* 229, 201–203. doi: 10.1016/S0304-3940(97)00444-8
- Koob, G. F., and Bloom, F. E. (1988). Cellular and molecular mechanisms of drug dependence. *Science* 242, 715–723. doi: 10.1126/science.2903550
- Koob, G. F., Sanna, P. P., and Bloom, F. E. (1998). Neuroscience of addiction. *Neuron* 21, 467–476. doi: 10.1016/S0896-6273(00)80557-7
- Lan, K.-C., Lin, Y.-F., Yu, F.-C., Lin, C.-S., and Chu, P. (1998). Clinical manifestations and prognostic features of acute methamphetamine intoxication. *J. Formos. Med. Assoc.* 97, 528–533.
- Lewerenz, J., Albrecht, P., Tien, M. L. T., Henke, N., Karumbayaram, S., Kornblum, H. I., et al. (2009). Induction of Nrf2 and xCT are involved in the action of the neuroprotective antibiotic ceftriaxone *in vitro*. *J. Neurochem.* 111, 332–343. doi: 10.1111/j.1471-4159.2009.06347.x
- Lewerenz, J., Klein, M., and Methner, A. (2006). Cooperative action of glutamate transporters and cystine/glutamate antiporter system Xc<sup>-</sup> protects from oxidative glutamate toxicity. *J. Neurochem.* 98, 916–925. doi: 10.1111/j.1471-4159.2006.03921.x
- Li, J., Olinger, A. B., Dassow, M. S., and Abel, M. S. (2003). Up-regulation of GABA B receptor mRNA and protein in the hippocampus of cocaine- and lidocaine-kindled rats. *Neuroscience* 118, 451–462. doi: 10.1016/S0306-4522(02)00995-8
- Macaluso, A., Bernabucci, M., Trabucco, A., Ciolli, L., Troisi, F., Baldini, R., et al. (2013). Analgesic effect of a single preoperative dose of the antibiotic ceftriaxone in humans. *J. Pain* 14, 604–612. doi: 10.1016/j.jpain.2013.01.774
- Madden, C. J., and Morrison, S. F. (2003). Excitatory amino acid receptor activation in the raphe pallidus area mediates prostaglandin-evoked thermogenesis. *Neuroscience* 122, 5–15. doi: 10.1016/S0306-4522(03)00527-X
- Mark, K. A., Quinton, M. S., Russek, S. J., and Yamamoto, B. K. (2007). Dynamic changes in vesicular glutamate transporter 1 function and expression related to methamphetamine-induced glutamate release. *J. Neurosci.* 27, 6823–6831. doi: 10.1523/JNEUROSCI.0013-07.2007

- Mark, K. A., Soghomonian, J.-J., and Yamamoto, B. K. (2004). High-dose methamphetamine acutely activates the striatonigral pathway to increase striatal glutamate and mediate long-term dopamine toxicity. *J. Neurosci.* 24, 11449–11456. doi: 10.1523/JNEUROSCI.3597-04.2004
- Melendez, R. L., Hicks, M. P., Cagle, S. S., and Kalivas, P. W. (2005). Ethanol exposure decreases glutamate uptake in the nucleus accumbens. *Alcoholism* 29, 326–333. doi: 10.1097/01.ALC.0000156086.65665.4D
- Miller, B. R., Dorner, J. L., Shou, M., Sari, Y., Barton, S. J., Sengelaub, D. R., et al. (2008). Up-regulation of GLT1 expression increases glutamate uptake and attenuates the Huntington's disease phenotype in the R6/2 mouse. *Neuroscience* 153, 329–337. doi: 10.1016/j.neuroscience.2008.02.004
- Mitani, A., and Tanaka, K. (2003). Functional changes of glial glutamate transporter GLT-1 during ischemia: an *in vivo* study in the hippocampal CA1 of normal mice and mutant mice lacking GLT-1. *J. Neurosci.* 23, 7176–7182.
- Moszczynska, A., Turenne, S., and Kish, S. J. (1998). Rat striatal levels of the antioxidant glutathione are decreased following binge administration of methamphetamine. *Neurosci. Lett.* 255, 49–52. doi: 10.1016/S0304-3940(98)00711-3
- Nakamura, K., and Morrison, S. F. (2008). A thermosensory pathway that controls body temperature. *Nat. Neurosci.* 11, 62–71. doi: 10.1038/nn2027
- Nakamura, K., Matsumura, K., Hübschle, T., Nakamura, Y., Hioki, H., Fujiyama, F., et al. (2004). Identification of sympathetic premotor neurons in medullary raphe regions mediating fever and other thermoregulatory functions. *J. Neurosci.* 24, 5370–5380. doi: 10.1523/JNEUROSCI.1219-04.2004
- Nash, J. F., and Yamamoto, B. K. (1992). Methamphetamine neurotoxicity and striatal glutamate release: comparison to 3, 4-methylenedioxymethamphetamine. *Brain Res.* 581, 237–243. doi: 10.1016/0006-8993(92)90713-J
- Norenberg, M. D., Huo, Z., Neary, J. T., and Roig-Cantesano, A. (1997). The glial glutamate transporter in hyperammonemia and hepatic encephalopathy: relation to energy metabolism and glutamatergic neurotransmission. *Glia* 21, 124–133.
- Pati, D., Kelly, K., Stennett, B., Frazier, C. J., and Knackstedt, L. A. (2016). Alcohol consumption increases basal extracellular glutamate in the nucleus accumbens core of Sprague-Dawley rats without increasing spontaneous glutamate release. *Eur. J. Neurosci.* 44, 1896–1905. doi: 10.1111/ejn.13284
- Paxinos, G., and Watson, C. (2007). *The Rat Brain in Stereotaxic Coordinates*. New York, NY: Academic Press.
- Phillipson, O., and Griffiths, A. (1985). The topographic order of inputs to nucleus accumbens in the rat. *Neuroscience* 16, 275–296. doi: 10.1016/0306-4522(85)90002-8
- Qi, J., Han, W. Y., Yang, J. Y., Wang, L. H., Dong, Y. X., Wang, F., et al. (2012). Oxytocin regulates changes of extracellular glutamate and GABA levels induced by methamphetamine in the mouse brain. *Addict. Biol.* 17, 758–769. doi: 10.1111/j.1369-1600.2012.00439.x
- Ramirez, S. H., Potula, R., Fan, S., Eidem, T., Papugani, A., Reichenbach, N., et al. (2009). Methamphetamine disrupts blood-brain barrier function by induction of oxidative stress in brain endothelial cells. *J. Cereb. Blood Flow Metab.* 29, 1933–1945. doi: 10.1038/jcbfm.2009.112
- Ramos, K. M., Lewis, M. T., Morgan, K. N., Crysdale, N. Y., Kroll, J. L., Taylor, F. R., et al. (2010). Spinal upregulation of glutamate transporter GLT-1 by ceftriaxone: therapeutic efficacy in a range of experimental nervous system disorders. *Neuroscience* 169, 1888–1900. doi: 10.1016/j.neuroscience.2010.06.014
- Rao, P. S. S., and Sari, Y. (2014). Effects of ceftriaxone on chronic ethanol consumption: a potential role for xCT and GLT1 modulation of glutamate levels in male P rats. *J. Mol. Neurosci.* 54, 71–77. doi: 10.1007/s12031-014-0251-5
- Raval, A. P., Dave, K. R., Mochly-Rosen, D., Sick, T. J., and Pérez-Pinzón, M. A. (2003). ePKC is required for the induction of tolerance by ischemic and NMDA-mediated preconditioning in the organotypic hippocampal slice. *J. Neurosci.* 23, 384–391.
- Rawls, S. M., Tallarida, R., Robinson, W., and Amin, M. (2007). The beta-lactam antibiotic, ceftriaxone, attenuates morphine-evoked hyperthermia in rats. *Br. J. Pharmacol.* 151, 1095–1102. doi: 10.1038/sj.bjp.0707309
- Ricaurte, G. A., Schuster, C. R., and Seiden, L. S. (1980). Long-term effects of repeated methylamphetamine administration on dopamine and serotonin neurons in the rat brain: a regional study. *Brain Res.* 193, 153–163. doi: 10.1016/0006-8993(80)90952-X
- Ricaurte, G. A., Guillery, R. W., Seiden, L. S., Schuster, C. R., and Moore, R. Y. (1982). Dopamine nerve terminal degeneration produced by high doses of methylamphetamine in the rat brain. *Brain Res.* 235, 93–103. doi: 10.1016/0006-8993(82)90198-6
- Rossetti, Z. L., and Carboni, S. (1995). Ethanol withdrawal is associated with increased extracellular glutamate in the rat striatum. *Eur. J. Pharmacol.* 283, 177–183. doi: 10.1016/0014-2999(95)00344-K
- Rothstein, J. D., Dykes-Hoberg, M., Pardo, C. A., Bristol, L. A., Jin, L., Kuncl, R. W., et al. (1996). Knockout of glutamate transporters reveals a major role for astroglial transport in excitotoxicity and clearance of glutamate. *Neuron* 16, 675–686. doi: 10.1016/S0896-6273(00)80086-0
- Rothstein, J. D., Patel, S., Regan, M. R., Haenggli, C., Huang, Y. H., Bergles, D. E., et al. (2005).  $\beta$ -Lactam antibiotics offer neuroprotection by increasing glutamate transporter expression. *Nature* 433, 73–77. doi: 10.1038/nature03180
- Rothstein, J. D., Van Kammen, M., Levey, A. I., Martin, L. J., and Kuncl, R. W. (1995). Selective loss of glial glutamate transporter GLT-1 in amyotrophic lateral sclerosis. *Ann. Neurol.* 38, 73–84. doi: 10.1002/ana.410380114
- Sari, Y., Sakai, M., Weedman, J. M., Rebec, G. V., and Bell, R. L. (2011). Ceftriaxone, a beta-lactam antibiotic, reduces ethanol consumption in alcohol-preferring rats. *Alcohol Alcohol.* 46, 239–246. doi: 10.1093/alcal/agr023
- Sari, Y., Smith, K. D., Ali, P. K., and Rebec, G. V. (2009). Upregulation of GLT1 attenuates cue-induced reinstatement of cocaine-seeking behavior in rats. *J. Neurosci.* 29, 9239–9243. doi: 10.1523/JNEUROSCI.1746-09.2009
- Sari, Y., and Sreemantula, S. (2012). Neuroimmunophilin GPI-1046 reduces ethanol consumption in part through activation of GLT1 in alcohol-preferring rats. *Neuroscience* 227, 327–335. doi: 10.1016/j.neuroscience.2012.10.007
- Sari, Y., Sreemantula, S. N., Lee, M. R., and Choi, D.-S. (2013). Ceftriaxone treatment affects the levels of GLT1 and ENT1 as well as ethanol intake in alcohol-preferring rats. *J. Mol. Neurosci.* 51, 779–787. doi: 10.1007/s12031-013-0064-y
- Sato, H., Tamba, M., Ishii, T., and Bannai, S. (1999). Cloning and expression of a plasma membrane cystine/glutamate exchange transporter composed of two distinct proteins. *J. Biol. Chem.* 274, 11455–11458. doi: 10.1074/jbc.274.17.11455
- Seiden, L. S., Commins, D. L., Vosmer, G., Axt, K., and Marek, G. (1988). Neurotoxicity in dopamine and 5-hydroxytryptamine terminal fields: a regional analysis in nigrostriatal and mesolimbic projections. *Ann. N. Y. Acad. Sci.* 537, 161–172. doi: 10.1111/j.1749-6632.1988.tb42104.x
- Shibata, M., Hori, T., Kiyohara, T., and Nakashima, T. (1981). Effects of single waves of cortical spreading depression on thermoregulatory behavior. *Adv. Physiol. Sci.* 32, 113–115.
- Shibata, M., Hori, T., Kiyohara, T., and Nakashima, T. (1988). Convergence of skin and hypothalamic temperature signals on the sulcal prefrontal cortex in the rat. *Brain Res.* 443, 37–46. doi: 10.1016/0006-8993(88)91596-X
- Shibata, M., Hori, T., and Nagasaka, T. (1985). Effects of single cortical spreading depression on metabolic heat production in the rat. *Physiol. Behav.* 34, 563–567. doi: 10.1016/0031-9384(85)90049-6
- Shioda, K., Nisijima, K., Yoshino, T., and Kato, S. (2010). Effect of risperidone on acute methamphetamine-induced hyperthermia in rats. *Drug Alcohol Depend.* 111, 241–249. doi: 10.1016/j.drugalcdep.2010.05.001
- Simões, A. P., Duarte, J. A., Agasse, F., Canas, P. M., Tomé, A. R., Agostinho, P., et al. (2012). Blockade of adenosine A2A receptors prevents interleukin-1 $\beta$ -induced exacerbation of neuronal toxicity through a p38 mitogen-activated protein kinase pathway. *J. Neuroinflammation* 9:204. doi: 10.1186/1742-2094-9-204
- Sonsalla, P. K., Nicklas, W. J., and Heikkila, R. E. (1989). Role for excitatory amino acids in methamphetamine-induced nigrostriatal dopaminergic toxicity. *Science* 243, 398–400. doi: 10.1126/science.2563176
- Stephans, S. E., and Yamamoto, B. K. (1994). Methamphetamine-induced neurotoxicity: roles for glutamate and dopamine efflux. *Synapse* 17, 203–209. doi: 10.1002/syn.890170310
- Stinson, F. S., Grant, B. F., Dawson, D. A., Ruan, W. J., Huang, B., and Saha, T. (2005). Comorbidity between DSM-IV alcohol and specific drug use disorders in the United States: results from the national epidemiologic survey on alcohol and related conditions. *Drug Alcohol Depend.* 80, 105–116. doi: 10.1016/j.drugalcdep.2005.03.009
- Thöne-Reineke, C., Neumann, C., Namsolleck, P., Schmerbach, K., Krikov, M., Schefe, J. H., et al. (2008). The  $\beta$ -lactam antibiotic, ceftriaxone, dramatically

- improves survival, increases glutamate uptake and induces neurotrophins in stroke. *J. Hypertens.* 26, 2426–2435. doi: 10.1097/HJH.0b013e328313e403
- Trantham-Davidson, H., LaLumiere, R. T., Reissner, K. J., Kalivas, P. W., and Knackstedt, L. A. (2012). Ceftriaxone normalizes nucleus accumbens synaptic transmission, glutamate transport, and export following cocaine self-administration and extinction training. *J. Neurosci.* 32, 12406–12410. doi: 10.1523/JNEUROSCI.1976-12.2012
- Tseng, L., Wei, E., Loh, H., and Li, C. H. (1980). beta-Endorphin: central sites of analgesia, catalepsy and body temperature changes in rats. *J. Pharmacol. Exp. Ther.* 214, 328–332.
- Wei, J., Pan, X., Pei, Z., Wang, W., Qiu, W., Shi, Z., et al. (2012). The beta-lactam antibiotic, ceftriaxone, provides neuroprotective potential via anti-excitotoxicity and anti-inflammation response in a rat model of traumatic brain injury. *J. Trauma Acute Care Surg.* 73, 654–660. doi: 10.1097/TA.0b013e31825133c0
- Wise, R. A., and Rompré, P.-P. (1989). Brain dopamine and reward. *Annu. Rev. Psychol.* 40, 191–225. doi: 10.1146/annurev.ps.40.020189.001203
- Xue, C. J., Ng, J. P., Li, Y., and Wolf, M. E. (1996). Acute and repeated systemic amphetamine administration: effects on extracellular glutamate, aspartate, and serine levels in rat ventral tegmental area and nucleus accumbens. *J. Neurochem.* 67, 352–363. doi: 10.1046/j.1471-4159.1996.67010352.x
- Yamamoto, B. K., and Zhu, W. (1998). The effects of methamphetamine on the production of free radicals and oxidative stress. *J. Pharmacol. Exp. Ther.* 287, 107–114.
- Zhang, Q., and Tan, Y. (2011). Nerve growth factor augments neuronal responsiveness to noradrenaline in cultured dorsal root ganglion neurons of rats. *Neuroscience* 193, 72–79. doi: 10.1016/j.neuroscience.2011.07.027

**Conflict of Interest Statement:** The authors declare that the research was conducted in the absence of any commercial or financial relationships that could be construed as a potential conflict of interest.

Copyright © 2016 Althobaiti, Alshehri, Almalki and Sari. This is an open-access article distributed under the terms of the Creative Commons Attribution License (CC BY). The use, distribution or reproduction in other forums is permitted, provided the original author(s) or licensor are credited and that the original publication in this journal is cited, in accordance with accepted academic practice. No use, distribution or reproduction is permitted which does not comply with these terms.