



The Metabolic Factor Kynurenic Acid of Kynurenine Pathway Predicts Major Depressive Disorder

Hongye Liu¹, Lei Ding¹, Huifeng Zhang¹, David Mellor^{1,2}, Haiyan Wu¹, Dongmei Zhao¹, Chuangxin Wu¹, Zhiguang Lin¹, Jiaojian Yuan³ and Daihui Peng^{1*}

¹ Shanghai Mental Health Center, School of Medicine, Shanghai Jiao Tong University, Shanghai, China, ² School of Psychology, Deakin University, Melbourne, VIC, Australia, ³ Instrumental Analysis Center, Shanghai Jiao Tong University, Shanghai, China

OPEN ACCESS

Edited by:

Shaohua Hu,
Zhejiang University, China

Reviewed by:

Huanbin Xu,
Tulane University, United States
Bing Li,
University of Louisville, United States

*Correspondence:

Daihui Peng
pdhsh@126.com

Specialty section:

This article was submitted to
Mood and Anxiety Disorders,
a section of the journal
Frontiers in Psychiatry

Received: 05 August 2018

Accepted: 15 October 2018

Published: 19 November 2018

Citation:

Liu H, Ding L, Zhang H, Mellor D, Wu H, Zhao D, Wu C, Lin Z, Yuan J and Peng D (2018) The Metabolic Factor Kynurenic Acid of Kynurenine Pathway Predicts Major Depressive Disorder. *Front. Psychiatry* 9:552. doi: 10.3389/fpsy.2018.00552

Background: Metabolic factors in the kynurenine pathway (KP) have been widely accepted as being a major mechanism in Major Depressive Disorder (MDD). However, the effects of these metabolites on the degree and pattern of MDD are still poorly understood, partly due to the elusiveness of the level of metabolites when diagnosing depression. This study aimed to explore a novel diagnostic method analyzing peripheral blood with mass spectrometry to assess metabolites from KP in patients with MDD and Bipolar Depression (BD).

Methods: Thirty-three patients with MDD, 20 patients with BD, and 23 healthy control participants were enrolled. Metabolic factors of KP from plasma including tryptophan (TRP), kynurenine (KYN), kynurenic acid (KYNA), and quinolinic acid (QUIN) were analyzed by UPLC-3Q-MS, and levels compared across three groups. Correlation between HAMD scores and metabolite levels conducted. Receiver operating characteristic (ROC) curve was used to determine the diagnostic value of metabolic factors in MDD.

Results: Levels of KYNA, QUIN, KYNA/QUIN, and KYNA/KYN were statistically different across the three groups ($P < 0.05$); HAMD scores and TRP, KYN, KYNA/QUIN levels were negatively correlated in the MDD group ($r = -0.633, -0.477, -0.418, P < 0.05$); Accuracy of KYNA diagnosing MDD was 82.5% with the optimal diagnostic value being 15.48 ng/ml. Diagnostic accuracy was increased to 83.6% when KYNA and QUIN levels were used in combination.

Conclusion: This results indicate that metabolic factors of KP play a crucial role in the occurrence and development of MDD, supporting the metabolic imbalance hypothesis of MDD. Furthermore, our study also provides a new diagnostic method to study MDD based on plasma KYNA level, and suggests that KYNA would be a potential biomarker in diagnosing depression patients.

Keywords: major depressive disorder, kynurenine pathway, quinolinic acid, kynurenic acid, mass spectrometry

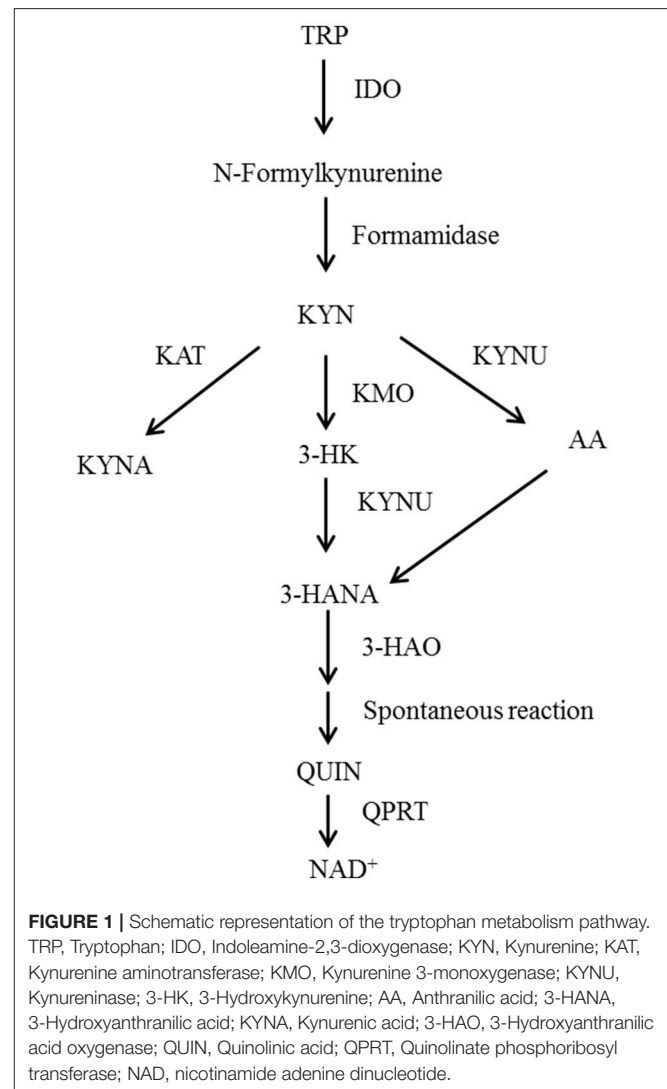
INTRODUCTION

Major depressive disorder (MDD) is a serious mental disorder with high rates of morbidity, recurrence, and disability (1–3) that is associated with genetic factors, psychological factors and atypical brain structure or function (4, 5). Despite differences in pathogenesis, genetics, pathophysiology, etc., bipolar depression (BD) can easily be misdiagnosed as a subtype of MDD (6) due to its parallel clinical characteristic (7). It is important that these disorders are differentially diagnosed to ensure that relevant treatments are initiated, and to assist in this innovative approaches are critical.

Recently, researchers have found that depressive behaviors induced by cytokines are probably related to the activation of the kynurenine pathway (KP). Studies based on animal models of depressive symptoms have reported that indoleamine 2, 3-dioxygenase (IDO) is likely to be a key metabolic enzyme in the KP (8–11). Other studies have explored the metabolic processes of the KP (**Figure 1**). Under physiological conditions, tryptophan is transformed into kynurenine (KYN) through tryptophan 2, 3-dioxygenase. Then, KYN continues to be tabolized mainly along two independent branches. The first is a neurotoxic branch, and KYN is transformed steeply into 3-hydroxy kynurenine, 3-hydroxyo-o-aminobenzoic acid and quinolinic acid by virtue of various enzymes (e.g., canine urine-3-monoxygenase). The second is a neuroprotective branch, where KYN is transformed into kynurenic acid by kynurenine amino transferases.

Another body of research has suggested that 5-hydroxytryptine (5-HT), which is essential to emotion regulation, decreases after immune activation and this causes depression (12–14). However, other researchers have proposed that metabolic factors of the KP have neurotoxic or neuroprotective effects that damage central neuroplasticity and induce depression. Myint and Kim's widely-accepted "KP metabolic imbalance hypothesis" proposes that metabolic imbalance is the major mechanism of KP induced-depression (14–18). In line with this, variations in metabolic factors in the KP and relevant enzymes have been found in MDD, bipolar affective disorder and several neurodegenerative diseases (19, 20).

The activity of the metabolic enzyme IDO can be evaluated using the ratio KYN/TRP (21). TRP is converted to KYN by TDO or IDO. Intriguingly, the level of both of them has been found to reduce or increase in primary studies of MDD (22–25). KYN is transformed into KYNA through the metabolic enzyme KAT, which is a neuroprotective branch of the KP. KYNA is a non-selective competitive ionic glutamate receptor antagonist inhibiting the toxicity of excitatory amino acids by blocking N-methyl-d-aspartate receptor (NMDARs) and also antagonizing the $\alpha 7$ nicotinic acetylcholine receptor to inhibit the release of presynaptic glutamate (19). Reduction of KYNA found in the blood and cerebrospinal fluid of MDD patients has been related to degree of depression (18, 24). The KYNA/KYN ratio could be also employed to evaluate enzyme activity of KAT. Several metabolic factors in KYN transformed to QUIN branches have been corroborated to be neurotoxic and called the neurotoxic branch of the KP, among which 3-HK could



induce apoptosis (26). Furthermore, QUIN exerts a neurotoxic role through activating NMDARs. The ratio of neuroprotective factors to neurotoxic factors (KYNA/QUIN) could also be used to estimate the imbalance of the KP metabolism to assess the degree of nerve injury (27).

The theoretic basis of the KP metabolism imbalance's role in depression is derived from preclinical research focused on depression induced by immune response. However, the actual impacts of metabolic factors in the KP on primary MDD are largely elusive.

In this study, we aimed to establish if level of metabolic factors, determined by mass spectrometer analysis of peripheral blood could be used to differentiate hospital patients with depression and bipolar disorder from each other and from healthy controls. In addition we aimed to establish the association between levels of metabolic factors and severity of depression among MDD patients, and the utility of metabolic factor levels for clinical diagnosis of depression.

MATERIALS AND METHODS

Study Population

Inclusion criteria for the MDD patient group included: (1) Meeting the DSM-V diagnostic criteria for MDD; (2) A of 20 or more on the HAMD-24; (3) A negative score on the Mood disorder scale (MDQ); (4) A negative screening on the Brief Screening Scale for Dementia (BSSD); (5) No psychoactive drugs taken within 1 week; (6) Han nationality, right handedness, age between 18 and 60 years. Inclusion criteria the BD patient group included: (1) Meeting the DSM-V depression diagnostic criteria for BD of DSM-V; (2) A score of 20 or more on the HAMD-24 (3) Screening positive on the MDQ; (4) Negative screening for the BSSD; (5) A score of <10 on the Young Mania Rating Scale (YMRS); (6) No psychoactive drugs taken within 1 week; (7) Han nationality, right handedness, age between 18 to 60 years. Inclusion criteria for the healthy control group included: (1) No mental illness or history of mental illness; (2) No family history of psychosis; (3) A score of <7 on the HAMD-24; (4) Negative screening on both the MDQ and BSSD; (5) Han nationality, right handedness, aged between 18 to 60 years.

Exclusion criteria for the MDD and BD groups were: (1) Somatic disease, brain organic disease or depressive disorder caused by substance abuse or dependence; (2) Personality disorder and mental retardation; (3) Bipolar attack type, rapid circulation type; (4) Major physical diseases such as heart, brain, lung, liver, kidney, or drug dependence; (5) Autoimmune diseases, chronic inflammation, severe metabolic syndrome and other diseases affecting the immune system metabolism; (6) Taking anti-inflammatory drugs, antiviral drugs, antibiotics or immunoregulatory drugs; (7) Being pregnant or lactating. Exclusion criteria for the healthy control group included: (1) A major physical disease such as heart, brain, lung, liver, or kidney disease, or drug dependence; (2) Autoimmune diseases, chronic inflammation, severe metabolic syndrome and other diseases affecting the immune system metabolism; (3) Taking anti-inflammatory drugs, antiviral drugs, antibiotics or immunoregulatory drugs; (4) Being pregnant or lactating.

After screening and assessment, 33 patients with MDD and 20 patients with BD receiving either inpatient or outpatient care at the Shanghai Mental Health Center were enrolled into the study between May 2017 to January 2018. In addition, 23 healthy volunteers who satisfied the inclusion and exclusion criteria above were recruited online between July 2017 and January 2018 into a control condition.

This study protocol was reviewed and approved by the Ethics Committee of Shanghai Mental Health Center (batch No.:2015Ky-03). All subjects voluntarily participated and signed informed consent.

Method

Demographic Survey, Clinical Evaluation, and Blood Collection

Clinical evaluation

Enrolled patients and the healthy controls were diagnosed and reviewed by one attending physician and one (deputy) chief physician according to DSM-5 criteria. All participants

were assessed with the HAMD-24, MDQ, BSSD and YMRS, respectively. An interview was conducted between a member of the research team and study participants to record demographic data, including sex, age, education level, family history, and somatic diseases. Other data includes initial age of incidence, total course of disease, times of incidence, course of previous treatment.

Plasma sample collection

Five milliliter empty stomach venous blood at early morning was collected from participants. The venous blood was placed in an EDTA anticoagulant tube. The plasma was separated at the rate of 3,000 rpm at normal temperature in 30 min and then the plasma was stored in a tube at -80°C . Clinical evaluation was performed on the same day as blood collection.

Main Instruments and Reagents

Instruments

UPLC-3Q-MS (Model: ACQUITY UPLC & SCIEX SelexION Triple Quad 5500 System, America Waters and AB Sciex company); Thermo Hypersil GOLD PFP (2.1*100 mm 1.9 μm) liquid chromatography column (America Thermo Scientific Company); Analyst 1.5.2 chromatography-mass spectrometry control software (AB Sciex company); 0.45 μm filter membrane and its filter extractor (America, Millipore company); Low temperature bench centrifuge (America, Eppendorf); MX5 million molecular balance (Switzerland, Mettler-Toledo).

Reagent

standard reagent of TRP, KYN, KYNA, QUIN (sigma); Methanol, acetonitrile ammonium acetate, and glacial acetic acid (Shanghai Anpu Experimental Technology Company).

Laboratory Detection

Standard preparation

0.901 mg TRP, 1.248 mg KYN, 1.282 mg QUIN were weighed accurately and then dissolved and mixed in 50% methanol solution, respectively, to make 1 mg/ml standard stock solution; 0.671 mg KYNA was weighed accurately and then dissolved and mixed in ultra-pure water to make 0.167 mg/ml standard stock solution, which was split storing in -20°C . Another mixed

TABLE 1 | Detection parameters of UPLC-3Q-MS.

Q1	Q3	DP(V)	ID	CE(V)
205.1	188.2*	40	Trp	13
205.1	118.2	40	Trp	34
209.1	192.1*	40	Kyn	12
209.1	94	40	Kyn	17
190	144.2*	60	Kyna	22
190	89	60	Kyna	50
168	124*	60	QUIN	13
168	78	60	QUIN	28

Q1, parent ion; Q2, daughter ion; ID, identification; DP, decluster voltage; CE, collision voltage; *, quantitative ion.

standard working solution in 1 ug/ml was used to prepare standard curve point of concentration of 5, 10, 50, 100, 250, 500 ng/ml as well.

Plasma sample treatment

Plasma samples were redissolved and 50 ul plasma was placed in a 1.5 ml EP tube, then 200 ul methanol solution was added to the plasma sample. After that protein was gently shaken for 3 min on the swirl mixer of which supernatant was centrifuged at 4°C for 5 min at the rate of 12,000 rpm. Finally, collected supernatant was put into UPLC-3Q-MS instrument for analysis and detection.

Analyses were carried out using an ultra-performance liquid chromatography machine (ACQUITY UPLC; Waters, Milford, MA, USA) coupled with a triple quadrupole mass spectrometer (SCIEX SelexION Triple Quad™ 5500 System; Applied Biosystems, AB SCIEX, Foster City, CA, USA; UPLC-3QMS). Separation was obtained with a Thermo Hypersil GOLD PFP column (2.1*100 mm 1.9 μm) at ambient temperature using 20 mM ammonium acetate (eluent A) and acetonitrile (eluent B) as the mobile phase at a constant flow rate of 0.4 mL min⁻¹. The eluted with the following gradient profile: 0–0.5 min:

99% A; 0.5–1.0 min: 99–65% A; 1.0–3.0 min: 65–55% A; 3.0–3.4 min: 55–2% A; 3.4–5 min 2% A, 5.0–5.1 min: 2–99% A; 5.1–7.0 min: 99% A. The electron spray ionization (ESI) source used in this study was operated in positive ion mode, and its main working parameters were as follows: ion spray voltage, 5,500 V; curtain gas, 35 psi; both GS1 (Nebulizer Gas) and GS2 (Heater Gas), 55 psi; and probe temperature, 600°C. The declustering potential (DP), entrance potential (EP), collision cell exit potential (CEP), and collision energy (CE) values were used to perform multiple reaction monitoring (MRM) and were optimized automatically by the software for each of the analytes (Table 1).

Qualitative and quantitative analysis of metabolic factors

Peak retention value comparison method and superposition method are employed to analyzed TRP, KYN, KYNA, and QUIN qualitatively. The peak area was determined quantitatively by external standard method. Acquisition and processing of chromatographic data was accomplished by Analyst 1.5.1. Concentration of plasma metabolic factor (ng/ml) = peak area of metabolic factor in plasma/peak area of metabolic factor in standard solution * concentration of metabolic factor in standard solution*2.

TABLE 2 | Demographic data among three groups.

Characteristic	MDD (n = 33)	BD (n = 20)	HC (n = 23)	T/F/X ²	P
Age (year)	28.39 ± 5.20	30.45 ± 5.08	29.30 ± 5.89	0.912	0.406
Gender (male/female)	10/23	8/12	12/11	2.717	0.257
Education year (year)	12.36 ± 2.15	11.85 ± 1.76	12.09 ± 2.81	0.326	0.723
HAMD scores	31.73 ± 9.93	32.65 ± 11.08	0.00 ± 0.00	109.761	<0.001*
Incidence times	2 (1,4)	2.5 (1.25,4.5)	–	0.386	0.700
Course of disease (month)	96.00 ± 88.82	97.73 ± 124.09	–	0.059	0.953
First onset age (year)	36.67 ± 17.21	22.35 ± 6.22	–	4.335	<0.001*
Family history (%)	8/24.24	8/40.00	–	1.467	0.355

MDD, major depressive disorder; BD, bipolar depression; HC, healthy control; HAMD, Hamilton Depression Rating Scale; *P<0.05; –, no relevant data.

TABLE 3 | Comparison of metabolic factors in the KP among three groups.

Metabolic factors	MDD ^a (n = 33)	BD ^b (n = 33)	HC ^c (n = 23)	F	P	Bonferroni group comparison
TRP (ng/ml)	5933.64 ± 740.19	5821.00 ± 912.81	5995.22 ± 667.65	0.270	0.764	ns
KYN (ng/ml)	156.76 ± 35.47	152.45 ± 44.90	170.50 ± 39.55	1.299	0.279	ns
KYNA (ng/ml)	11.43 ± 3.73	11.09 ± 3.10	18.32 ± 9.02	11.941	<0.001*	c>a;c>b;
QUIN (ng/ml)	8.80 ± 1.49	8.52 ± 1.73	11.00 ± 2.73	10.752	<0.001*	c>a;c>b;
KYNA/QUIN	1.32 ± 0.44	1.35 ± 0.48	1.66 ± 0.56	3.508	0.035*	c>a;c>b;
KYN/TRP	0.0264 ± 0.0053	0.0259 ± 0.0052	0.0290 ± 0.0085	1.519	0.226	ns
KYNA/KYN	0.075 ± 0.024	0.076 ± 0.020	0.106 ± 0.034	10.857	<0.001*	c>a;c>b;

MDD, major depressive disorder; BD, bipolar depression; HC, healthy control; TRP, Tryptophan; KYN, Kynurenine; KYNA, Kynurenine acid; QUIN, Quinolinic acid; ns: no significant difference at the levels of p < 0.05. ^aMDD; ^bD; ^cHC; *P < 0.05.

Statistical Analysis

All data in this study were statistically analyzed by SPSS19.0 and MedCalc software. Age, education years, course of disease, first onset age, HAMD-24 scores and level of metabolic factors were positively distributed, presented by mean \pm standard deviation, incidence times were measurement data with non-normal distribution, presented by quartile; sex, and family history are presented by frequency; Comparison of measurement data

with positive distribution among groups was analyzed by one way-ANOVA; *t*-test was used to analyze normal distribution data between two groups, frequency data is analyzed by chi-square test; Correlation between HAMD-24 score and metabolic factor level is analyzed by Pearson correlation test; ROC curve was used to evaluate the efficacy of metabolic factor level in diagnosing depression. A significance level of 0.05 was used.

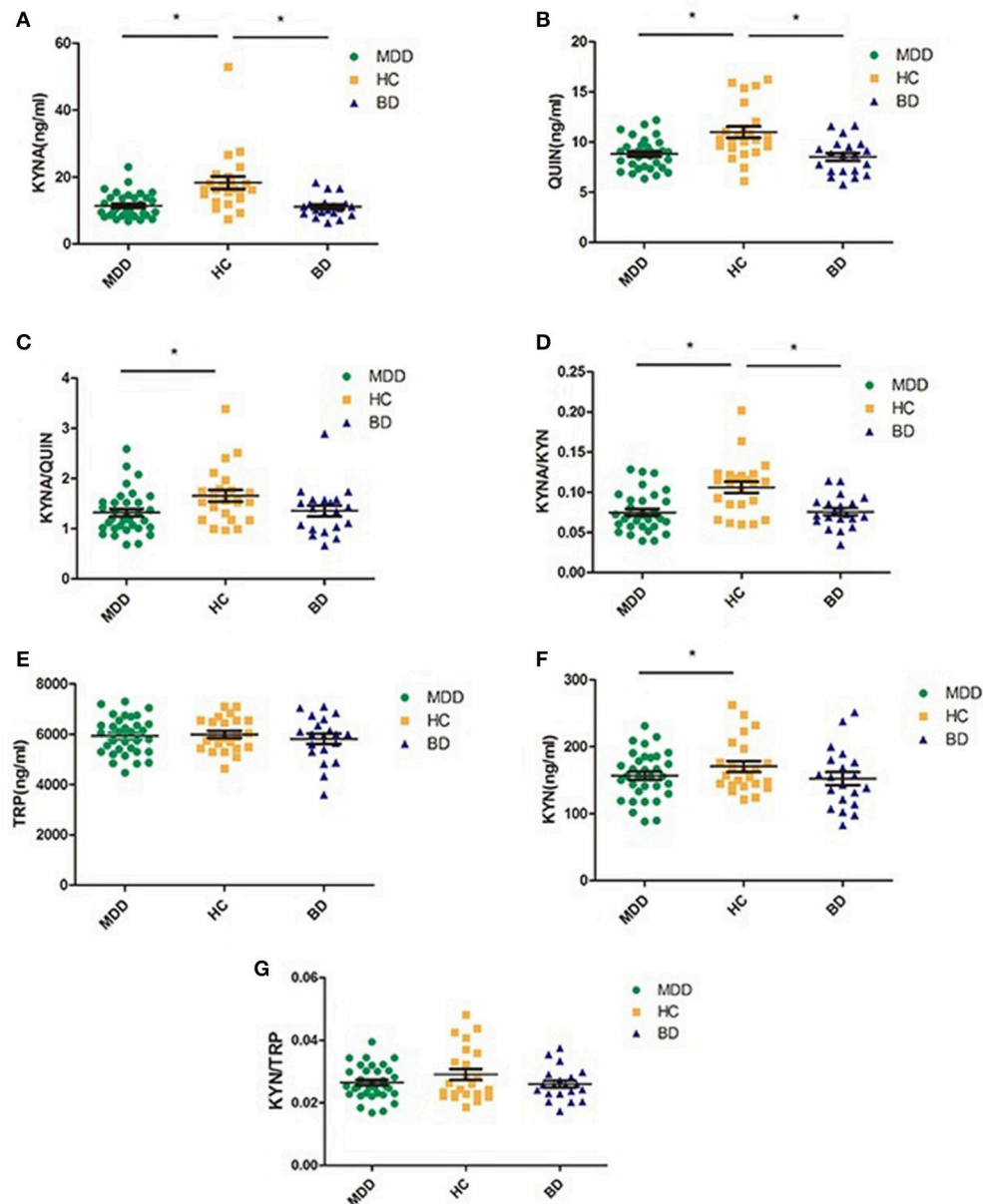


FIGURE 2 | Comparison of various metabolic factors in KP among three groups (MDD, BD, and HC); **(A)** compared with HC group, both MDD and BD groups showed significantly lower KYNA levels; **(B)** compared with HC group, both MDD and BD groups showed significant lower QUIN levels, **(C)** the index of KYNA/QUIN was significantly lower in the MDD group than in the HC group; **(D)** the index of KYNA/KYN was significantly lower in both the MDD and the BD groups than HC group, **(E)** there was no significant difference among the three groups in TRP levels; **(F)** compared with the HC group, the MDD group showed significantly lower KYN levels; **(G)** there was no significant difference among three groups. MDD, major depressive disorder; BD, bipolar disorder; HC, healthy controls; TRP, Tryptophan; KYN, Kynurenine; KYNA, Kynurenic acid; QUIN, Quinolinic acid; **P* < 0.05.

RESULTS

General Demographic Data

Characteristics of each group are presented in **Table 2**. There were no significant differences between groups on demographic variables including age, gender and level of education. First onset age in the MDD group was higher than in the BD group (see **Table 2**). Episode duration, course of disease, and family history were not significantly different across the depression groups (see **Table 2**).

KP Metabolic Factor Analysis

Table 3 and **Figure 2** present levels of metabolic factors for the three groups. ANOVA revealed that there was a significant group effect for KYNA ($F = 11.941$, $P < 0.001$) and QUIN ($F = 10.752$, $P < 0.001$), KYNA/QUIN ($F = 3.508$, $P = 0.035$), and KYNA/KYN ($F = 10.857$, $P < 0.001$). There was no group effect for TRP, KYN, or KYN/TRP.

Post hoc testing revealed that MDD patients had lower levels of KYNA, QUIN, KYNA/QUIN, and KYNA/KYN than those in the HC group (all $P < 0.05$). BD patients also had lower levels of KYNA, QUIN, and KYNA/KYN than healthy controls ($P < 0.05$). There were no significant differences in the metabolic factors between the MDD and BD patients (see **Figure 2**).

Correlation Analysis Between Baseline KP Metabolic Factors and HAMD-24 Scores

To further investigate the association between KP and MDD, Pearson correlation analysis was performed between levels of metabolic factors and HAMD scores which are closely related to the severity of MDD. Results show that HAMD-24 scores were negatively correlated with TRP, KYNA, and KYNA/QUIN levels ($r = -0.633$, $P < 0.001$; $r = -0.477$, $P = 0.005$; $r = -0.418$, $P = 0.016$, respectively, see **Table 4** and **Figure 3**). Of the metabolic factors, TRP had the strongest association with severity of depression.

Metabolic Factors of KP in Diagnosing MDD

Given that the previous analyses demonstrate an association between metabolic factors of KP and MDD, ROC analysis was performed to establish a diagnostic value of these metabolic factors. Accuracy of KYNA, QUIN, KYNA/QUIN, KYNA/KYN was 82.5, 76.6, 70.6, 76.0%, respectively, among which KYNA was the highest with an optimal diagnostic value 15.45 ng/ml. Sensitivity and specificity were 90.9 and 69.6%, respectively (see **Figure 4**). Given that KYNA and QUIN have higher accuracy, combination analysis of KYNA and QUIN was performed and diagnostic accuracy reached 83.6%.

DISCUSSION

We found variations of metabolic factors in the KP existed between healthy controls and both MDD and BP. However, there were no significant differences between MDD and BD. Several of these metabolic factors were shown to be intimately correlated to severity of depression in the MDD group. Furthermore,

TABLE 4 | Correlation between HAMD scores and metabolic factors of KP in MDD.

Metabolic factors	r-value	P
TRP (ng/ml)	-0.633	<0.001*
KYN (ng/ml)	-0.243	0.173
KYNA (ng/ml)	-0.477	0.005*
QUIN (ng/ml)	-0.033	0.854
KYNA/QUIN	-0.418	0.016*
KYN/TRP	0.117	0.516
KYNA/KYN	-0.218	0.222

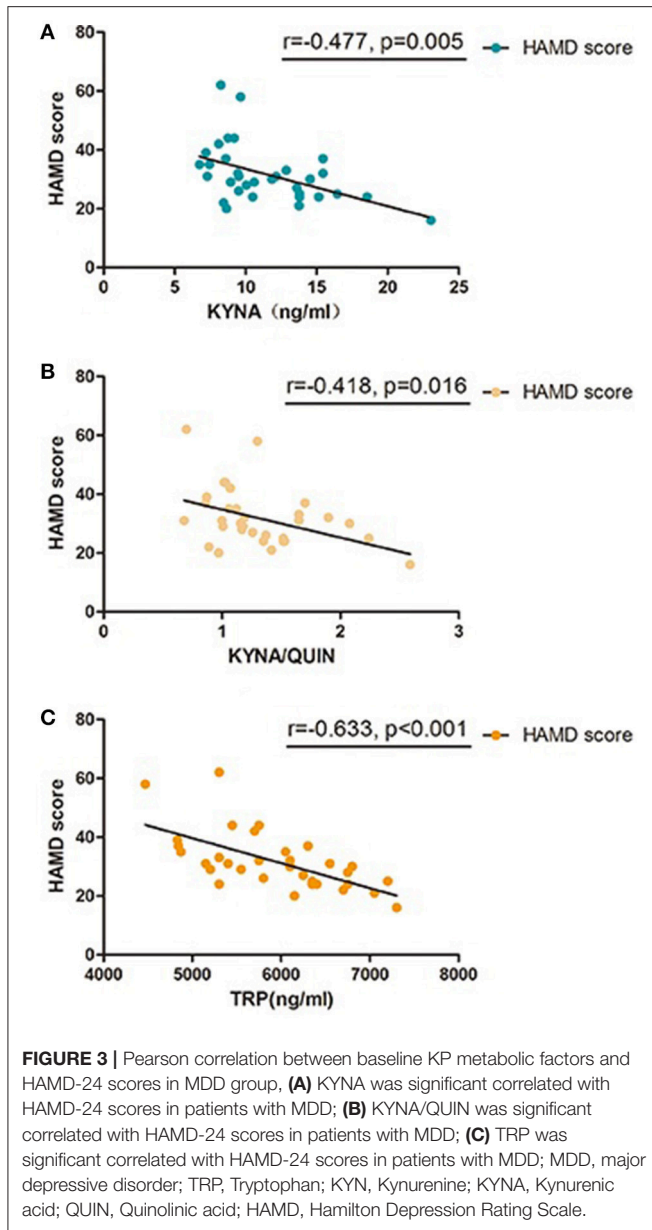
TRP, Tryptophan; KYN, Kynurenine; KYNA, Kynurenic acid; QUIN, Quinolinic acid; * $P < 0.05$.

QUIN, ratio of KYNA/QUIN and KYNA/KYN were found to be potential biomarkers for diagnosing MDD. Intriguingly, our results indicated that KYNA could be a bona-fide biomarker for diagnosing MDD with an accuracy of 82.5%.

Variations of KP-Related Metabolic Factors in Depressive Patients

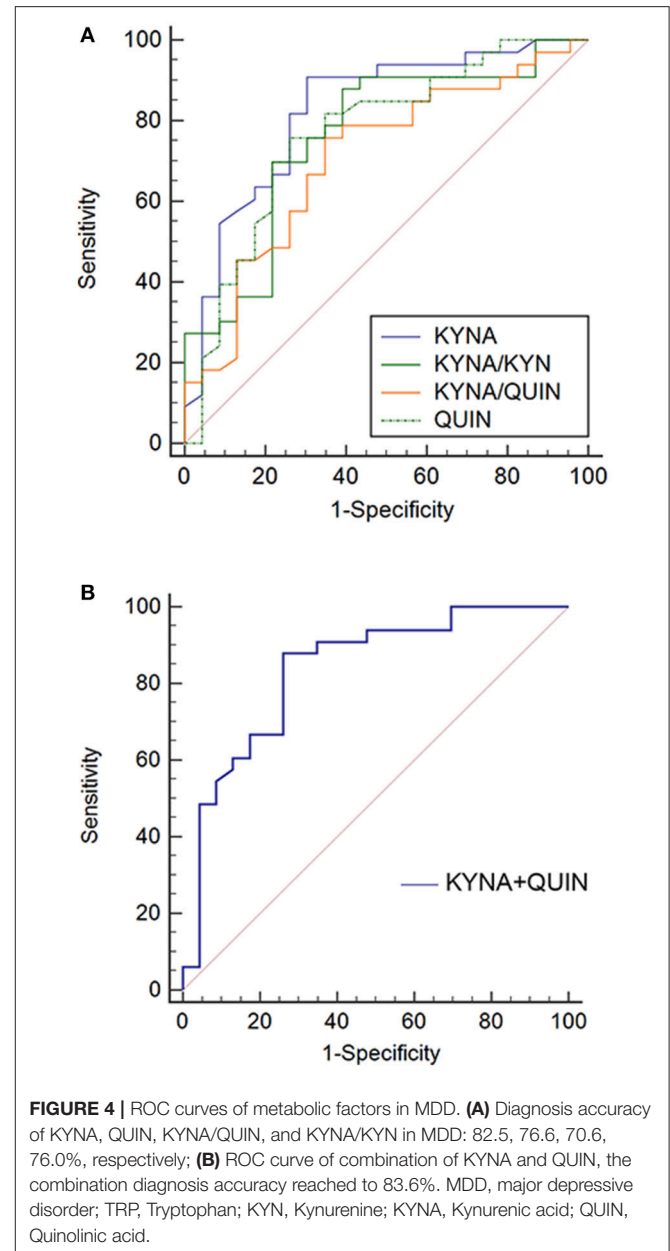
Our results show that levels of KYNA, QUIN, KYNA/KYN, KYNA/QUIN in MDD patients are lower compared to healthy controls. Previous studies have shown that KYNA has neuroprotective effects by blocking toxicity of excitatory amino acids, but is lower in MDD patients (19). In addition, the activity of KAT is reduced in light of decreased metabolism from the KP to the neuroprotective branch resulting in a decrease of KYNA/KYN (18, 24, 28), and KYNA/QUIN has been reported to be a crucial indicator of metabolic imbalance of the KP (29). Our results are consistent with these findings. In addition, variations in these metabolic factors between MDD patients and healthy controls also provide indications for clinical diagnosis of depression. However, the relative decrease in QUIN level was not consistent with the conclusion that QUIN level increases exert a neurotoxic role by activating NMDARs when depression occurs (16, 30). This could be due to the fact that QUIN is not the final product of the KP and would continue to degrade to NAD causing QUIN levels to decrease (31). In the future, it is recommended that neurotoxic factors and relative enzymes such as 3-HK and 3-HANA be measured in the KP toxic branch to evaluate downstream activity.

Consistent with research that found no evident variation of TRP and KYN in mood disorder patients compared to control controls (32), our results also showed that there was no significant difference in KYN, TRP, and KYN/TRP in the MDD group compared to the healthy control group. It is widely accepted that KYN/TRP, representing enzymatic activity of IDO, would elevate under inflammatory conditions activated by cytokines. However, this was not conformed by our results. It is possible that metabolic variation of the KP was induced by non-inflammatory activation. For example, neurotoxicity transformation of several metabolic factors or metabolic enzymes could have been induced by genetic or epigenetic changes (33). Or, variation of ratio could be due to KYN/TRP being co-regulated by both IDO and TDO (34).



Correlation Between Metabolic Factors and Severity of Depression

We used HAMD-24 scores as an indication of the severity of depression, and found that for the MDD patient group they were negatively correlated with levels of TRP, KYNA, and KYNA/QUIN. This suggests that the severity of depression could be intimately related to them, with lower levels of these metabolic factors being related to more severe symptoms of depression. If this is the case, patients with lower levels of metabolic factors should get more attention from clinical staff and superior nursing care. Among these factors, TRP has the strongest association with depression severity ($r = 0.633$). Given that there was no remarkable variation between MDD and control on this factor, TRP could exert a crucial role in depression remission, which is consistent with previous studies (35, 36) and could be further explored through expanding objects and establish animal model.



Clinical Diagnostic Value of KP in MDD

Finally, given that metabolic factors varied between the MDD and healthy control groups, we analyzed the diagnostic value of metabolic factors by ROC curve. Previous studies have shown that various inflammatory factors could be diagnostic indicators for MDD, while their accuracy and stability was yet to be determined (37–39). The results showed that the diagnostic value of KYNA, QUIN, KYNA/QUIN, and KYNA/KYN all exceeded 70%, with KYNA being the highest at 82.5%. Compared to QUIN, which could be further degraded, KYNA had higher stability supporting its excellent accuracy. Further, in light of the ratio value being affected by more elements, the ratios of KYNA/QUIN and KYNA/KYN were lower. The sensitivity and specificity of the KYNA indicator were found to be 90.9 and 69.6%, respectively, which suggests that KYNA could be used

23. Savitz J, Drevets WC, Smith CM, Victor TA, Wurfel BE, Bellgowan PS, et al. Putative neuroprotective and neurotoxic kynurenine pathway metabolites are associated with hippocampal and amygdalar volumes in subjects with major depressive disorder. *Neuropsychopharmacology* (2015) 1:463–71. doi: 10.1038/npp.2014.194
24. Savitz J, Drevets WC, Wurfel BE, Ford BN, Bellgowan PS, Victor TA, et al. Reduction of kynurenic acid to quinolinic acid ratio in both the depressed and remitted phases of major depressive disorder. *Brain Behav Immun.* (2015) 1:55–9. doi: 10.1016/j.bbi.2015.02.007
25. Savitz J, Dantzer R, Wurfel BE, Victor TA, Ford BN, Bodurka J, et al. Neuroprotective kynurenine metabolite indices are abnormally reduced and positively associated with hippocampal and amygdalar volume in bipolar disorder. *Psychoneuroendocrinology* (2015) 1:200–11. doi: 10.1016/j.psypneuen.2014.11.015
26. Colin-González AL, Maldonado PD, Santamaría A. 3-Hydroxykynurenine: an intriguing molecule exerting dual actions in the central nervous system. *Neurotoxicology* (2013) 1:189–204. doi: 10.1016/j.neuro.2012.11.007
27. Johansson AS, Owe-Larsson B, Asp L, Kocki T, Adler M, Hetta J, et al. Activation of kynurenine pathway in *ex vivo* fibroblasts from patients with bipolar disorder or schizophrenia: cytokine challenge increases production of 3-hydroxykynurenine. *J Psychiatr Res.* (2013) 1:1815–23. doi: 10.1016/j.jpsychires.2013.08.008
28. O'Connor JC, Lawson MA, Andre C, Briley EM, Szegedi SS, Lestage J, et al. Induction of IDO by bacille Calmette-Guerin is responsible for development of murine depressive-like behavior. *J Immunol.* (2009) 1:3202–12. doi: 10.4049/jimmunol.0802722
29. Singh R, Savitz J, Teague TK, Polanski DW, Mayer AR, Bellgowanand P, et al. Mood symptoms correlate with kynurenine pathway metabolites following sports-related concussion. *J Neurol Neurosurg Psychiatry* (2016) 1:670. doi: 10.1136/jnnp-2015-311369
30. Walker AK, Budac DP, Bisulco S, Lee AW, Smith RA, Beenders B, et al. NMDA receptor blockade by ketamine abrogates lipopolysaccharide-induced depressive-like behavior in C57BL/6J mice. *Neuropsychopharmacology* (2013) 1:1609. doi: 10.1038/npp.2013.71
31. Braidyn N, Guilleminand GJ, Grant R. Effects of kynurenine pathway inhibition on NAD⁺ metabolism and cell viability in human primary astrocytes and neurons. *Int J Tryptophan Res.* (2011) 1:29. doi: 10.4137/IJTR.S7052
32. Sorgdrager FJH, Doornbos B, Penninx BW, Jongeand JH, Kema PD. The association between the hypothalamic pituitary adrenal axis and tryptophan metabolism in persons with recurrent major depressive disorder and healthy controls. *J Affect Disord.* (2017) 1:32–9. doi: 10.1016/j.jad.2017.06.052
33. Lavebratt C, Olsson S, Backlund L, Frisé L, Sellgren C, Priebe L, et al. The KMO allele encoding Arg452 is associated with psychotic features in bipolar disorder type 1, and with increased CSF KYNA level and reduced KMO expression. *Mol Psychiatry* (2014) 1:334–41. doi: 10.1038/mp.2013.11
34. Michael P, Nikolaus V, Iris KD, Wolfgangand O, Katharina W. Cancer immunotherapy by targeting IDO1/TDO and their downstream effectors. *Front Immunol.* (2014) 1:673. doi: 10.3389/fimmu.2014.00673
35. Wigner P, Czarny P, Galeckiand P, Sliwinski T. Oxidative and nitrosative stress as well as the tryptophan catabolites pathway in depressive disorders. *Psychiatr Danubina* (2017) 1:394. doi: 10.24869/psyd.2017.394
36. Benatti C, Blom JM, Rigillo G, Albani S, Zizzi F, Torta R, et al. Disease-induced neuroinflammation and depression. *CNS Neurol Disord.* (2016) 1:4749. doi: 10.2174/1871527315666160321104749
37. Li M, Soczynskaand JK, Kennedy SH. Inflammatory biomarkers in depression: an opportunity for novel therapeutic interventions. *Curr Psychiatry Rep.* (2011) 1:316–20. doi: 10.1007/s11920-011-0210-6
38. Schneider B, Prvulovic D, Oertel-Knöchel V, Knöchel C, Reinke B, Grexa M, et al. Biomarkers for major depression and its delineation from neurodegenerative disorders. *Prog Neurobiol.* (2011) 1:703–17. doi: 10.1016/j.pneurobio.2011.08.001
39. Martin C, Tansey KE, Schalkwykand LC, Powell TR. The inflammatory cytokines: molecular biomarkers for major depressive disorder? *Biomarkers Med.* (2015) 1:169–80. doi: 10.2217/bmm.14.29

Conflict of Interest Statement: The authors declare that the research was conducted in the absence of any commercial or financial relationships that could be construed as a potential conflict of interest.

Copyright © 2018 Liu, Ding, Zhang, Mellor, Wu, Zhao, Wu, Lin, Yuan and Peng. This is an open-access article distributed under the terms of the Creative Commons Attribution License (CC BY). The use, distribution or reproduction in other forums is permitted, provided the original author(s) and the copyright owner(s) are credited and that the original publication in this journal is cited, in accordance with accepted academic practice. No use, distribution or reproduction is permitted which does not comply with these terms.