



# Surface Sediment Samples From Early Age of Seafloor Exploration Can Provide a Late 19th Century Baseline of the Marine Environment

Marina C. Rillo<sup>1,2,3\*</sup>, Michal Kucera<sup>3</sup>, Thomas H. G. Ezard<sup>1</sup> and C. Giles Miller<sup>2\*</sup>

<sup>1</sup> Ocean and Earth Science, National Oceanography Centre Southampton, University of Southampton, Southampton, United Kingdom, <sup>2</sup> Department of Earth Sciences, Natural History Museum, London, United Kingdom, <sup>3</sup> MARUM Center for Marine Environmental Sciences, University of Bremen, Bremen, Germany

## OPEN ACCESS

### Edited by:

Laura Lorenzoni,  
University of South Florida,  
United States

### Reviewed by:

Kathy A. Tedesco,  
National Oceanic and Atmospheric  
Administration (NOAA), United States  
Dave Black,  
Stony Brook University, United States

### \*Correspondence:

Marina C. Rillo  
marina.rillo@evobio.eu  
C. Giles Miller  
g.miller@nhm.ac.uk

### Specialty section:

This article was submitted to  
Ocean Observation,  
a section of the journal  
Frontiers in Marine Science

**Received:** 12 September 2018

**Accepted:** 21 December 2018

**Published:** 15 January 2019

### Citation:

Rillo MC, Kucera M, Ezard THG and Miller CG (2019) Surface Sediment Samples From Early Age of Seafloor Exploration Can Provide a Late 19th Century Baseline of the Marine Environment. *Front. Mar. Sci.* 5:517. doi: 10.3389/fmars.2018.00517

Ocean-floor sediment samples collected up to 150 years ago represent an important historical archive to benchmark global changes in the seafloor environment, such as species' range shifts and pollution trends. Such benchmarking requires that the historical sediment samples represent the state of the environment at—or shortly before the time of collection. However, early oceanographic expeditions sampled the ocean floor using devices like the sounding tube or a dredge, which potentially disturb the sediment surface and recover a mix of Holocene (surface) and deeper, Pleistocene sediments. Here we use climate-sensitive microfossils as a fast biometric method to assess if historical seafloor samples contain a mixture of modern and glacial sediments. Our assessment is based on comparing the composition of planktonic foraminifera (PF) assemblages in historical samples with Holocene and Last Glacial Maximum (LGM) global reference datasets. We show that eight out of the nine historical samples contain PF assemblages more similar to the Holocene than to the LGM PF assemblages, but the comparisons are only significant when there is a high local species' temporal turnover (from the LGM to the Holocene). When analysing temporal turnover globally, we show that upwelling and temperate regions had greatest species turnover, which are areas where our methodology would be most diagnostic. Our results suggest that sediment samples from historical collections can provide a baseline of the state of marine ecosystems in the late nineteenth century, and thus be used to assess ocean global change trends.

**Keywords:** natural history collection (NHC), historical collections, pre-industrial, pre-anthropogenic, beta-diversity, species turnover, global change

## 1. INTRODUCTION

Late nineteenth and early twentieth century oceanographic expeditions set out to explore the vast and then widely unknown deep ocean. The voyage of HMS *Challenger* is a notable example. As she sailed around the globe between 1872–76, researchers mapped for the first time the shape of the ocean basins and described over 4,500 new species of marine life (Mantén, 1972). These early expeditions have important historical significance, as they mark the beginning of modern oceanography and stimulated further ocean exploration (Wüst, 1964).

From a scientific perspective, the observations and material acquired by these historical expeditions have great potential for global change research (Johnson et al., 2011; Lister and Group, 2011), as they provide a pre-1900 baseline of the marine environment (e.g., Roemmich et al., 2012; Gleckler et al., 2016). Yet historical seafloor sediment samples remain largely underutilized, because early seafloor sampling techniques involved collecting surficial sediments with instruments like the sounding tube, dredge or even the anchor (Thomson and Murray, 1891). All these instruments can penetrate below the surface and disturb the top layer of the sediment. As a result, such historical sediment samples might contain surface (Holocene) sediments mixed with deeper, glacial material (Hayward and Kawagata, 2005), potentially hindering their use as a historical baseline of the modern marine environment. Coring techniques provide more accurate sediment chronology (e.g., Röhl et al., 2000); however, historical samples represent the seafloor environment as much as 50 years earlier than the earliest core samples collected (Wüst, 1964), and thus contain sediments without any objects deposited after 1900. These uncontaminated historical samples can be useful for chemical analyses of the seafloor (e.g., pollution trends; Dekov et al., 2010), single-specimen analysis (e.g., Reichart et al., 2003; Wit et al., 2010) and investigations of species range shifts and invasions in the past century (e.g., Hoeksema et al., 2011). Therefore, it is important to assess the degree to which historical sediment samples represent Holocene or mixed-Pleistocene sediments.

One way to assess the degree of glacial mixing in the historical material would be to determine its absolute age using the radiocarbon dating technique, or to use glacial material proxies (e.g., Mg/Ca, oxygen isotopes). However, in cases where the extent of mixing is small, the exponentially decaying nature of the radiocarbon analysis can cause an ambiguous dating, and the isotopic analysis would require a large enough number of specimens to correctly represent the extent of the glacial mixing. Here we propose a complimentary method that uses planktonic foraminifera assemblage composition as a climate-sensitive fingerprint of the sediment age. Planktonic foraminifera (PF) are single-celled zooplankton that produce calcium carbonate shells and, upon death, accumulate in great numbers on the ocean floor (Hemleben et al., 1989). PF assemblage composition is sensitive to sea-surface temperature (Morey et al., 2005; Fenton et al., 2016) and its change between glacial and interglacial times has been used to determine the magnitude of glacial ocean cooling (MARGO Project Members, 2009).

In this brief report, we make use of the temperature sensitivity of PF and compare the composition of their assemblages in nine historical (> 100 years old) samples against reference PF assemblages from the Holocene (Siccha and Kucera, 2017) and the Last Glacial Maximum (Kucera et al., 2005a). We test whether it is possible to recover the extent of glacial mixing in historical seafloor sediment samples using PF assemblage composition. This new biometric method contributes to a more multidisciplinary approach to dating historical sediments.

## 2. MATERIALS AND METHODS

### 2.1. Historical Samples

Historical samples were retrieved from the Ocean-Bottom Deposits (OBD) Collection held by The Natural History Museum in London. The OBD Collection holds about 40,000 historical samples from all the world's oceans (<https://doi.org/10.5519/0096416>), including most of the sediment samples collected by HMS *Challenger* and the British Royal Navy survey ships (Kempe and Buckley, 1987). The OBD samples are kept sealed in their original glass jars and tubes and are usually dry as the result of the long (over 100 years) storage. We selected nine samples collected between 1874 and 1905, chosen to cover different oceans, latitudes and historical marine expeditions (**Table 1**). Half of the amount available in the OBD containers was further split into two equal parts, leaving an archive sample and a sample to be processed. The sample processing consisted of weighing, wet washing over a 63  $\mu\text{m}$  sieve and drying in a 60°C oven. The residues were further dry sieved over a 150 $\mu\text{m}$  sieve and the coarser fraction was split with a microsplitter as many times as needed to produce a representative aliquot containing around 300 PF shells (see Al-Sabouni et al., 2007). All PF specimens in each of the nine final splits were picked, glued to a micropaleontology slide and identified under a stereomicroscope to species level, resulting in a total of 2,611 individuals belonging to 31 species (**Table 1**, **Table S1**).

### 2.2. Holocene and Last Glacial Maximum Data

We tested whether the composition of PF assemblages in the historical samples is more similar to assemblages of the Holocene (last 11,700 years, Walker et al., 2008) or the Last Glacial Maximum (LGM, 21,000 years ago, MARGO Project Members, 2009). The Holocene census dataset (i.e., marine surface sediment samples taken by coring methods after 1945) was recently curated and published as the ForCenS dataset, comprising 4,205 assemblage counts from unique sites (Siccha and Kucera, 2017). Three LGM datasets from the MARGO project (Barrows and Juggins, 2004; Kucera et al., 2005a,b,c) were merged following the taxonomic standardization of Siccha and Kucera (2017). This merged LGM dataset includes 1165 counts from 389 unique sites. Moreover, local estimates of open-ocean sedimentation rates are available for 156 samples in the LGM datasets, and were used to analyse the results.

The assemblage compositions of the nine historical samples were then compared to the samples from the geographically nearest site in the Holocene and LGM datasets (**Figure S1A**). The distances between sites were calculated using the World Geodetic System of 1984 (WGS84, Hijmans, 2015). We then compiled annual mean and standard deviation values of sea surface temperature (SST) from the World Ocean Atlas 2013 (WOA13, 0 meters depth, Locarnini et al., 2013) for each of the 27 sites (historical, Holocene and LGM) to evaluate whether the neighboring sites are at similar SST ranges. Most neighboring sites had similar SST values except the two most southern samples (**Figure S1B**). The exceptional Holocene nearest sample

**TABLE 1** | Information about the historical sediment samples from the Ocean Bottom Deposits (OBD) Collection at The Natural History Museum, London (NHMUK).

Sample	Vessel HMS	Date	Method	Ocean	Lat	Long	Depth	m(g)	N(spl)	N(ind)	N(sp)
M.25	<i>Challenger</i>	21/02/1873	Sounding	Atlantic	24.33	-24.47	5,011	2.73	5	260	18
M.192	<i>Challenger</i>	07/03/1874	Sounding	Indian	-50.02	123.07	3,976	0.19	5	318	7
M.284	<i>Challenger</i>	11/03/1875	Sounding	Pacific	-0.70	147.00	2,012	1.98	7	331	16
M.408	<i>Challenger</i>	21/03/1876	Dredge	Atlantic	-21.25	-14.03	3,639	9.35	7	265	21
M.3787	<i>Egeria</i>	31/10/1887	Sounding	Indian	-19.57	64.63	2,869	1.23	5	376	24
M.4080	<i>Egeria</i>	26/08/1889	Sounding	Pacific	-15.65	-179.06	2,579	2.42	8	300	13
M.5246	<i>Penguin</i>	16/04/1891	Sounding	Indian	-26.94	111.18	3,676	1.49	5	279	18
M.8780	<i>Waterwitch</i>	22/01/1895	Sounding	Indian	-40.45	49.82	3,780	1.51	6	177	11
M.7487	<i>Sealark</i>	09/11/1905	Sounding	Indian	-7.59	61.48	3,758	2.86	8	305	18
Total										2,611	31

Columns: NHMUK John Murray sample number; vessel that collected the sample (HMS stands for Her/His Majesty's Ship); date that the sample was collected; method used for sampling; ocean where the sample was collected; latitude and longitude in decimal degrees; water depth in meters (transformed from fathoms); sampled mass before processing, in grams; number of splits to sample around 300 planktonic foraminifera (PF) individuals; number of PF individuals identified; number of PF species identified.

neighboring M.8780 was substituted by the fourth nearest neighbor, 66 km farther but more similar in SST (**Figure S1B**). The mean distance between our nine sites and their nearest neighbor set was 253 km in the Holocene data and 415 km in the LGM data.

### 2.3. Compositional Similarity

Assemblage similarity was expressed using the Morisita-Horn index (Morisita, 1959; Horn, 1966), which is an abundance-based overlap measure that preserves essential properties of similarity measurements (Jost et al., 2011). The Morisita-Horn calculates the compositional similarity by pairwise comparison of the relative abundance of each species, and is robust to under-sampling (i.e., rare species occurrence) (Jost et al., 2011). The index was calculated using the under-sampling bias correction (Chao et al., 2006), bootstrap confidence intervals based on 100 replicates and the R package *SpadeR* (version 0.1.1, Chao et al., 2016).

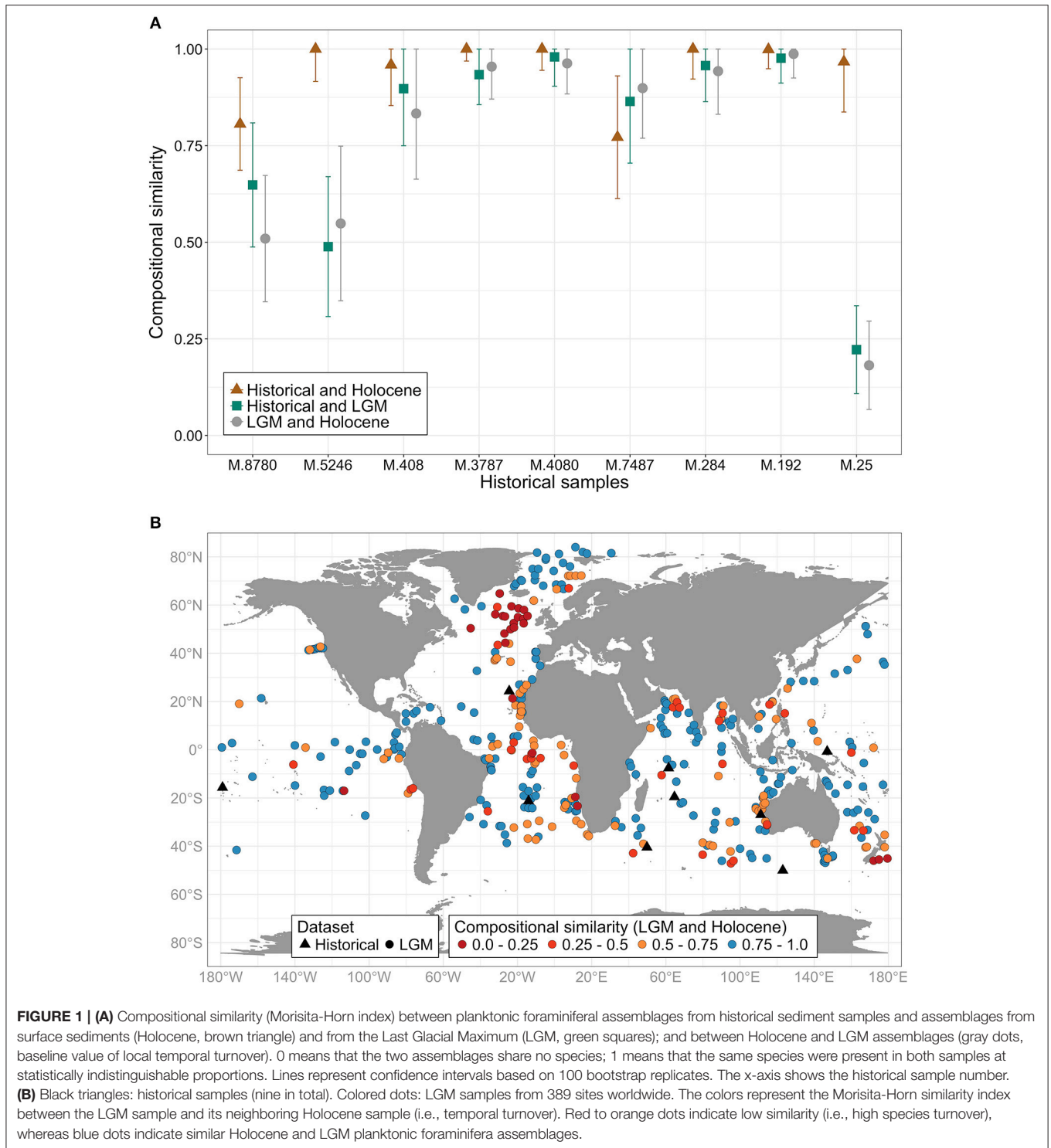
For each of the nine historical assemblages, we calculated the Morisita-Horn index three times: between (1) historical and neighboring Holocene assemblages, (2) historical and neighboring LGM assemblages and (3) neighboring Holocene and LGM assemblages. This third comparison gives us a baseline index value of how much the PF assemblage composition changed locally since the LGM. If historical samples are representative of surface sediments, the similarity index calculated between historical and Holocene samples should be higher than between historical and LGM samples, with non-overlapping confidence intervals. However, if historical samples are a mixture of Holocene and LGM material, confidence intervals of the historical-Holocene and historical-LGM comparisons overlap. Confidence intervals might also overlap if the baseline index value calculated between the Holocene and the LGM reference samples is high. A high baseline value means that the local Holocene and LGM assemblages are similar and thus there is less statistical potential to detect whether a historical sediment is a surface or mixed-glacial sample. To

understand where our biometric methodology would be most diagnostic, we compiled a world map of species turnover since the LGM, by calculating the Morisita-Horn index for each LGM sample and its nearest Holocene neighbor. Compositional similarity indexes were averaged per site. Distances between the Holocene sites and the 389 LGM sites were calculated using the WGS84, and averaged 52 km (median 1.5 km).

### 3. RESULTS AND DISCUSSION

In eight out of the nine samples, the compositional similarity was higher between the historical and Holocene assemblages than between historical and LGM assemblages (**Figure 1A**). However, non-overlapping confidence intervals were only present in two samples (M.25 and M.5246), inferring a Holocene age for these historical sediments. These two samples also showed the lowest similarities in assemblage composition between neighboring LGM and Holocene assemblages (**Figure 1A**, gray dots), meaning that there was a greater change in PF assemblage composition since the LGM in these two locations. The main differences in species compositions were the high relative abundance of *Globigerina bulloides* in the LGM neighboring sample of M.25, and of *Globoconella inflata* in the LGM neighboring sample of M.5246 (**Tables S3, S5**).

Compositional similarity index between historical and Holocene samples was always above 0.75, reaching maximum similarity in five samples (**Figure 1A**). In six samples, the confidence intervals of the three comparisons overlapped, and all the similarity indexes were above 0.75. Since LGM and Holocene PF assemblages showed higher similarity at these six sites, our biometric test is less diagnostic. The historical sample M.8780 showed no overlap between historical-Holocene and Holocene-LGM, but the historical-LGM comparison overlapped with both comparisons, suggesting that either this sample has a mix of Holocene and glacial material, or the SST differences among these neighboring samples prevents appropriate compositional comparisons (**Figure S1B**). M.8780 had more *Neogloboquadrina*



*pachyderma* than both the Holocene and LGM neighbors, and had *G. bulloides* abundances above 20%, similar to the LGM neighbor (Table S3). Moreover, differences in SST among the neighboring samples of M.192 (Figure S1B) did not seem to influence their compositional similarities (Figure 1A). Finally, the historical sample M.7487 was the only one that showed

higher similarity with LGM than Holocene assemblages, suggesting sediment mixing. The higher relative abundances of *Trilobatus sacculifer*, *N. incompta* and *Globigerinita glutinata* were responsible for this pattern (Table S5).

The global comparison between the Holocene and the LGM reference datasets shows the magnitude of PF assemblages

turnover since the LGM (i.e., temporal beta-diversity, **Figure 1B**). In general, upwelling (eastern boundary currents and equatorial regions) and temperate sites had greatest species turnover. Our methodology would be most diagnostic in these settings. Open-ocean sedimentation rates available for 156 sites averaged 6.8 centimeters per thousand of years (cm/ky). Therefore, historical sampling devices would have had to penetrate on average 142.8 cm (6.8 cm/ky times 21 ky) into the sediment to contaminate the surface seafloor sample with glacial material. Nevertheless, comparing sedimentation rates to the compositional similarity between LGM samples and their Holocene neighbors reveals that the greatest temporal turnover in species composition happened at sites of lower sedimentation rates (**Figure S2**), where sediment mixing during historical sampling would be most likely. Furthermore, six LGM neighbors of our nine historical samples had local estimates of sedimentation rate, which varied from 1.0 to 3.4 cm/ky (mean 1.8 cm/ky, **Tables S3–S5**). Thus, considering our historical samples only, depths of 21–71.4 cm into the sediment would have already reached glacial age material. Historical ocean-floor sampling methods potentially disturbed the surface and led to recovery of a mix of Holocene and deeper sediments, especially at sites of lower sedimentation rates. Our biometric method would be most useful at these sites with similar sedimentation settings, which also show the greatest temporal turnover in species composition (**Figure S2**).

#### 4. CONCLUSION

Our results indicate that historical ocean-floor sediment samples (collected more than 100 years ago) can represent surface (Holocene) sediments, despite the use of technology not designed to recover undisturbed sediments. We show that the temporal turnover in species occurrence since the LGM varies in space making our biometric method particularly suitable for upwelling and temperate areas with low sedimentation rates. The new method allows a non-destructive preliminary assessment of glacial contamination of historical samples. Independent proxy records (e.g., Mg/Ca) and/or radiocarbon dating would be valuable to validate the success of our technique. Ideally, the biometric approach would compliment chemical-based techniques to date historical sediments, aiming for more robust results as multiple alternative lines of evidence are presented. Our results highlight the scientific potential of historical seafloor

sediment collections (**Table S2**). As human activities increasingly modify the marine environment, these historical collections contain important information on the pre-1900 state of marine ecosystems.

#### DATA AVAILABILITY STATEMENT

The data and the R code used to produce this analysis are available from the NHM Data Portal: <https://doi.org/10.5519/0001936>.

#### AUTHOR CONTRIBUTIONS

All authors designed the research question. MR processed the historical sediments, with input from CM. MR and MK identified all specimens. MR designed and performed the analysis, with input from MK and TE. MR wrote the initial draft, and all authors reviewed and edited the final manuscript.

#### FUNDING

MR is funded by the Graduate School of the National Oceanography Centre Southampton and DAAD Research Grants for Doctoral Candidates 2016/17 (no. 57210260). TE is funded by NERC Advanced Research Fellowship NE/J018163/1.

#### ACKNOWLEDGMENTS

We are very grateful to Daniel Latorre, Kathy A. Tedesco and Dave Black for comments that improved the manuscript, to the MARGO Project members and to the ForCenS database authors for making their data openly available, to Dr. Epi Vaccaro who made material from the Natural History Museum Ocean Bottom Deposits Collection available and to Andy Purvis for helping sample the museum collection.

#### SUPPLEMENTARY MATERIAL

The Supplementary Material for this article can be found online at: <https://www.frontiersin.org/articles/10.3389/fmars.2018.00517/full#supplementary-material>

#### REFERENCES

- Al-Sabouni, N., Kucera, M., and Schmidt, D. N. (2007). Vertical niche separation control of diversity and size disparity in planktonic foraminifera. *Mar. Micropaleontol.* 63, 75–90. doi: 10.1016/j.marmicro.2006.11.002
- Barrows, T. T., and Juggins, S. (2004). Compilation of planktic foraminifera LGM assemblages from the Indo-Pacific Ocean. *PANGAEA*. doi: 10.1594/PANGAEA.227319
- Chao, A., Chazdon, R. L., Colwell, R. K., and Shen, T.-J. (2006). Abundance-based similarity indices and their estimation when there are unseen species in samples. *Biometrics* 62, 361–371. doi: 10.1111/j.1541-0420.2005.00489.x
- Chao, A., Ma, K. H., Hsieh, T. C., and Chiu, C.-H. (2016). *SpadeR: Species-Richness Prediction and Diversity Estimation with R*. R package version 0.1.1. Available online at: <https://CRAN.R-project.org/package=SpadeR>
- Dekov, V. M., Cuadros, J., Kamenov, G. D., Weiss, D., Arnold, T., Basak, C., et al. (2010). Metalliferous sediments from the H.M.S. *Challenger* voyage (1872–1876). *Geochim. Cosmochim. Acta* 74, 5019–5038. doi: 10.1016/j.gca.2010.06.001
- Fenton, I. S., Pearson, P. N., Jones, T. D., and Purvis, A. (2016). Environmental predictors of diversity in Recent planktonic foraminifera as recorded in marine sediments. *PLoS ONE* 11:e0165522. doi: 10.1371/journal.pone.0165522

- Gleckler, P. J., Durack, P. J., Stouffer, R. J., Johnson, G. C., and Forest, C. E. (2016). Industrial-era global ocean heat uptake doubles in recent decades. *Nat. Clim. Change* 6, 394–398. doi: 10.1038/nclimate2915
- Hayward, B. W., and Kawagata, S. (2005). Extinct foraminifera figured in Brady Challenger Report. *J. Micropalaeontol.* 24, 171–175. doi: 10.1144/jm.24.2.171
- Hemleben, C., Spindler, M., and Anderson, O. R. (1989). *Modern Planktonic Foraminifera*. New York, NY: Springer-Verlag New York Inc.
- Hijmans, R. J. (2015). *Geosphere: Spherical Trigonometry*. R package version 1.5-7. Available online at: <https://CRAN.R-project.org/package=geosphere>
- Hoeksema, B. W., van der Land, J., van der Meij, S. E., van Ofwegen, L. P., Reijnen, B. T., van Soest, R. W., et al. (2011). Unforeseen importance of historical collections as baselines to determine biotic change of coral reefs: the Saba Bank case. *Mar. Ecol.* 32, 135–141. doi: 10.1111/j.1439-0485.2011.00434.x
- Horn, H. S. (1966). Measurement of "overlap" in comparative ecological studies. *Am. Nat.* 100, 419–424. doi: 10.1086/282436
- Johnson, K. G., Brooks, S. J., Fenberg, P. B., Glover, A. G., James, K. E., Lister, A. M., et al. (2011). Climate change and biosphere response: unlocking the collections vault. *BioScience* 61, 147–153. doi: 10.1525/bio.2011.61.2.10
- Jost, L., Chao, A., and Chazdon, R. L. (2011). *Compositional Similarity and  $\beta$  (beta) Diversity (in Biological Diversity: Frontiers in Measurement and Assessment)*, 1st Edn., Chap. 6. Oxford University Press.
- Kempe, D. R. C., and Buckley, H. A. (1987). Fifty years of oceanography in the Department of Mineralogy, British Museum (Natural History). *Bull. Brit. Museum (Nat. Hist.)* 15, 59–97.
- Kucera, M., Rosell-Mele, A., Schneider, R., Waelbroeck, C., and Weinelt, M. (2005a). Multiproxy approach for the reconstruction of the glacial ocean surface (MARGO). *Quater. Sci. Rev.* 24, 813–819. doi: 10.1016/j.quascirev.2004.07.017
- Kucera, M., Weinelt, M., Kiefer, T., Pflaumann, U., Hayes, A., Weinelt, M., et al. (2005b). Compilation of planktic Foraminifera census data, LGM from the Atlantic Ocean. doi: 10.1594/PANGAEA.227329
- Kucera, M., Weinelt, M., Kiefer, T., Pflaumann, U., Hayes, A., Weinelt, M., et al. (2005c). Compilation of planktic Foraminifera census data, LGM from the Pacific Ocean. PANGAEA. doi: 10.1594/PANGAEA.227325
- Lister, A. M., and Group, C. C. R. (2011). Natural history collections as sources of long-term datasets. *Trends Ecol. Evol.* 26, 153–154. doi: 10.1016/j.tree.2010.12.009
- Locarnini, R. A., Mishonov, A. V., Antonov, J. I., Boyer, T. P., Garcia, H. E., Baranova, O. K., et al. (2013). World Ocean Atlas 2013, Volume 1: temperature. NOAA Atlas NESDIS 73, 1–40.
- Mantel, A. A. (1972). C. Wyville Thomson, J. Murray, and the "Challenger" expedition. *Earth Sci. Rev.* 8, 255–266. doi: 10.1016/0012-8252(72)90108-0
- MARGO Project Members (2009). Constraints on the magnitude and patterns of ocean cooling at the Last Glacial Maximum. *Nat. Geosci.* 2, 127–132. doi: 10.1038/ngeo411
- Morey, A. E., Mix, A. C., and Pisias, N. G. (2005). Planktonic foraminiferal assemblages preserved in surface sediments correspond to multiple environment variables. *Quater. Sci. Rev.* 24, 925–950. doi: 10.1016/j.quascirev.2003.09.011
- Morisita, M. (1959). Measuring of interspecific association and similarity between communities. *Mem. Faculty Sci. Kyushu Univ. Ser. E (Biology)* 3, 65–80.
- Reichert, G.-J., Jorissen, F., Anschutz, P., and Mason, P. R. (2003). Single foraminiferal test chemistry records the marine environment. *Geology* 31, 355–358. doi: 10.1130/0091-7613(2003)031<0355:SFTCRT>2.0.CO;2
- Roemmich, D., Gould, W. J., and Gilson, J. (2012). 135 years of global ocean warming between the Challenger expedition and the Argo Programme. *Nat. Clim. Change* 2:425. doi: 10.1038/nclimate1461
- Röhl, U., Bralower, T., Norris, R., and Wefer, G. (2000). New chronology for the late Paleocene thermal maximum and its environmental implications. *Geology* 28:927. doi: 10.1130/0091-7613(2000)28<927:NCFTLP>2.0.CO;2
- Siccha, M., and Kucera, M. (2017). ForCenS, a curated database of planktonic foraminifera census counts in marine surface sediment samples. *Sci. Data* 4:sdata2017109. doi: 10.1038/sdata.2017.109
- Thomson, C. W., and Murray, J. (1891). *Report on the Scientific Results of the Voyage of HMS Challenger During the Years 1872–76*. Deep-Sea Deposits. Edinburgh: HM Stationery Office.
- Walker, M., Johnsen, S., Rasmussen, S. O., Steffensen, J.-P., Popp, T., Gibbard, P., et al. (2008). The Global Stratotype Section and Point (GSSP) for the base of the Holocene Series/Epoch (Quaternary System/Period) in the NGRIP ice core. *Episodes* 31, 264–267. Available online at: <https://hdl.handle.net/10289/920>
- Wit, J., Reichert, G.-J., A Jung, S., and Kroon, D. (2010). Approaches to unravel seasonality in sea surface temperatures using paired single-specimen foraminiferal  $\delta^{18}O$  and Mg/Ca analyses. *Paleoceanogr. Paleoclimatol.* 25, 1–15. doi: 10.1029/2009PA001857
- Wüst, G. (1964). The major deep-sea expeditions and Research Vessels 1873–1960: a contribution to the history of oceanography. *Prog. Oceanogr.* 2, 1–52. doi: 10.1016/0079-6611(64)90002-3

**Conflict of Interest Statement:** The authors declare that the research was conducted in the absence of any commercial or financial relationships that could be construed as a potential conflict of interest.

Copyright © 2019 Rillo, Kucera, Ezard and Miller. This is an open-access article distributed under the terms of the Creative Commons Attribution License (CC BY). The use, distribution or reproduction in other forums is permitted, provided the original author(s) and the copyright owner(s) are credited and that the original publication in this journal is cited, in accordance with accepted academic practice. No use, distribution or reproduction is permitted which does not comply with these terms.