



# The Use of Specific Serological Biomarkers to Detect CaniLeish Vaccination in Dogs

Carla Lima<sup>1,2,3</sup>, Nuno Santarém<sup>1,2\*</sup>, Javier Nieto<sup>4</sup>, Javier Moreno<sup>4</sup>, Eugenia Carrillo<sup>4</sup>, Daniella Castanheira Bartholomeu<sup>5</sup>, Lilian Lacerda Bueno<sup>5</sup>, Ricardo Fujiwara<sup>5</sup>, Célia Amorim<sup>1,2†</sup> and Anabela Cordeiro-da-Silva<sup>1,2,3\*</sup>

## OPEN ACCESS

### Edited by:

Jasim Muhammad Uddin,  
University of Queensland, Australia

### Reviewed by:

Faten Abdelaal Okda,  
St. Jude Children's Research Hospital,  
United States  
Aneesh Thakur,  
University of Copenhagen,  
Denmark

### \*Correspondence:

Nuno Santarém  
santarem@ibmc.up.pt  
Anabela Cordeiro-da-Silva  
cordeiro@ibmc.up.pt

### † Present address:

Célia Amorim,  
Faculdade de Farmácia da  
Universidade do Porto, Departamento  
de Química Aplicada, Porto, Portugal

### Specialty section:

This article was submitted to  
Veterinary Infectious Diseases,  
a section of the journal  
Frontiers in Veterinary Science

**Received:** 09 July 2019

**Accepted:** 08 October 2019

**Published:** 24 October 2019

### Citation:

Lima C, Santarém N, Nieto J,  
Moreno J, Carrillo E, Bartholomeu DC,  
Bueno LL, Fujiwara R, Amorim C and  
Cordeiro-da-Silva A (2019) The Use of  
Specific Serological Biomarkers to  
Detect CaniLeish Vaccination in Dogs.  
Front. Vet. Sci. 6:373.  
doi: 10.3389/fvets.2019.00373

<sup>1</sup> i3S – Instituto de Investigação e Inovação em Saúde, Universidade do Porto, Porto, Portugal, <sup>2</sup> IBMC – Instituto de Biologia Molecular e Celular, Universidade do Porto, Porto, Portugal, <sup>3</sup> Faculdade de Farmácia da Universidade do Porto, Departamento de Ciências Biológicas, Porto, Portugal, <sup>4</sup> WHO Collaborating Centre for Leishmaniasis, National Centre for Microbiology, Instituto de Salud Carlos III, Majadahonda, Spain, <sup>5</sup> Departamento de Parasitologia, Instituto de Ciências Biológicas, Universidade Federal de Minas Gerais (UFMG), Belo Horizonte, Brazil

Canine leishmaniosis (CanL) prevention in the Mediterranean basin is considered essential to stop human zoonotic visceral leishmaniasis. In this context, vaccination of dogs is expected to have a significant impact in disease control. CaniLeish® (Virbac Animal Health) is one of a few CanL vaccines that are at this moment licensed in Europe. This vaccine contains purified excreted-secreted proteins of *Leishmania* having several antigens/immunogens with potential to influence serological response. Therefore, it is important to know if CaniLeish vaccination increased the diagnostic challenges associated with conventional serology, limiting the value of some antigens. To address this 20 dogs from a cohort of 35 healthy dogs that were vaccinated, maintained indoor for 1 month and then returned to their natural domiciles for 2 years. After this period, they were re-called to evaluate their clinical/parasitological condition and assess the evolution of seroreactivity against different antigens: soluble promastigote *Leishmania* antigens (SPLA), recombinant protein *Leishmania infantum* cytosolic peroxiredoxin, recombinant protein K39 (rK39), recombinant protein K28 and recombinant kinesin degenerated derived repeat using ELISA. Two years after vaccination all vaccinated non-infected animals were seropositive for SPLA. For the other antigens the serological profile was indistinguishable from non-infected animals. Moreover, vaccinated animals presented a characteristic relative serological profile, with higher normalized serological response to SPLA than rK39. This fact enabled to distinguish with sensitivity 92.3% and specificity 95.4%, vaccinated non-infected dogs from infected and non-infected dogs. Ultimately, relative serological profile enabled the detection of healthy vaccinated animals enabling more accurate serological surveys.

**Keywords:** leishmaniosis, *Leishmania*, vaccination, diagnostic, serology

## INTRODUCTION

Canine leishmaniosis (CanL) is a vector-borne zoonotic disease, caused by protozoan parasites of the genus *Leishmania*, present in four continents impacting veterinary and public health (1–3). Moreover, the prevalence of human zoonotic visceral leishmaniasis (ZVL) and CanL, in endemic areas, are associated (4–6). Although early diagnosis, treatment, vector, and reservoir control are part of surveillance programs to control CanL (3, 7, 8), vaccination is considered an important tool to prevent the human and canine disease (9–11). Currently, in Europe, there are two available canine vaccines: CaniLeish<sup>®</sup> and LetiFend<sup>®</sup> (8, 12). The CaniLeish vaccine contains excreted/secreted antigens purified from the culture supernatant of *Leishmania infantum* promastigotes. The proteomic studies on excreted/secreted antigens confirm the existence of several proteins that are not exclusively secreted, being also present in parasite preparations (13, 14). Therefore, as CaniLeish induces Th1 cell-mediated response and production of IgG1 and IgG2 antibodies, seroreactivity due to natural infection or due to immunoprophylaxis is difficult to distinguish as cross-reactivity to several *Leishmania* antigens can occur (8, 15). Therefore, considering that CaniLeish is now available for over 7 years and vaccine-induced anti-*Leishmania* antibodies can be detectable for months after administration, it is important to evaluate if vaccine-induced seroconversion might represent a problem in surveillance and control programs (15). To address this possibility, serum of CaniLeish vaccinated dogs from a previous study (8), that involved the vaccination of 20 dogs from a cohort of 35 naive dogs and a subsequent 2 years follow up, was used to evaluate the evolution of seroreactivity to diagnosis relevant antigens like SPLA (soluble promastigote *Leishmania* antigens), rK39 and other molecules of high serological value like the kinesins constructs rK28 (16), recombinant kinesin degenerated derived repeat (rKDDR) (17) or recombinant protein *Leishmania infantum* cytosolic peroxiredoxin (LicTXNPx) (18) using enzyme-linked immunosorbent assay (ELISA). With the exception of LicTXNPx, a peroxiredoxin associated to the protection of the parasites from oxidative stress (19) all the recombinant proteins used are synthetic peptides containing or enriched in immunodominant epitopes. The rK39 is a repetitive immunodominant epitope from a kinesin-related protein conserved in viscerotropic *Leishmania* (20). The kDDR is a 39 amino acid repetitive sequence originated from an originated from an *in-silico* epitope prediction analysis (17). The rK28 is a synthetic construct created by fusing multiple tandem repeat sequences of *Leishmania donovani* from haspb1 and k39 kinesin genes to the ORF of haspb2 (21).

## MATERIALS AND METHODS

### Animals

The study from which the serological samples originated involved cohort of 35 healthy dogs was studied for 2 years (8). Previously, parasitological (PCR from Bone Marrow and culture) and serological tests Indirect Fluorescence Antibody Test (IFAT)

were performed to confirm the absence of *Leishmania* infection. Twenty dogs were vaccinated (V) with CaniLeish<sup>®</sup> (standard formulation) and 15 non-vaccinated animals were included as controls (NV). Primo-vaccination program was done in 3 doses with 21 days of interval each. After the last dose dogs were housed in kennels with insecticide nets for 1 more month. After this period the animals returned to their domiciles. A booster vaccination was performed 1 year after the third dose of primo-vaccination.

### Sampling

Samples were collected at two-time points as described in the original study (8): M1 (1 month after the administration of the last dose of primo-vaccination, at the end of their period in the kennel) and M25 (25 months after the last dose of primo-vaccination). IFAT (Indirect Fluorescence Antibody Test), PCR and culture assays were performed in the two-time points (8). Clinical surveillance was also done to evaluate clinical manifestations compatible with CanL. At the end of the study, the cohort was sub-divided in 4 groups concerning PCR and clinical evaluation: C- (non-vaccinated non-infected animals), C+ (non-vaccinated infected animals), V- (vaccinated non-infected animals), and V+ (vaccinated infected animals).

### Antigens

For SPLA, *Leishmania* promastigotes were cultivated as previously described (22). Parasites with 5 days of culture were then washed 3 times with phosphate-buffered saline (PBS) pH 7.4 and centrifuged at  $3,500 \times g$ , 10 min, at 4°C. The pellet was then suspended at a concentration of  $10^8$  parasites/ml in PBS containing 1 mM phenylmethylsulfonyl fluoride protease inhibitor and submitted to 10 freeze-thaw cycles for rupture of the parasites. This suspension was centrifuged at  $13,000 \times g$ , 30 min, at 4°C and the supernatant was recovered, quantified by DC (detergent compatible)<sup>TM</sup> Protein Assay (BioRad, Germany), and stored at –80°C in single-use aliquots. The recombinant protein LicTXNPx was purified by affinity chromatography on a Ni-NTA column (Qiagen) as described in previous reports (23) and obtained as a recombinant protein containing six histidine residues at its N-terminal. The rLicTXNPx was quantified and stored at –80°C in single aliquots. The rK39 and rK28 lyophilized antigens, obtained from Dr. Steven Reed, from Infectious Disease Research Institute (Seattle, USA) were suspended in deionized and 0.22 μm membrane-filtered H<sub>2</sub>O, quantified and stored at –80°C in single use-aliquots. The recombinant protein rKDDR, provided by Dr. Ricardo Fujiwara, from Universidade Federal de Minas Gerais (Belo Horizonte, Brasil), was quantified and stored at –80°C in single aliquots.

### Evaluation of Seroreactivity

The serological reactivity in the canine samples was evaluated by ELISA using each of the 5 different antigens: SPLA, LicTXNPx, rK39, K28, and rKDDR. Ninety-six-well flat-bottomed microtiter plates (Greiner Bio-One) were coated with 50 μl of 0.1 M carbonate buffer, pH = 9.6, with 10 μg/ml of SPLA, 3 μg/ml of

LicTXNPx, 1 µg/ml of rK39, 4 µg/ml of rK28, and 3 µg/ml of rKDDR. Plates were incubated overnight at 4°C and blocked with 200 µl of PBS-low-fat-milk 3% at 37°C for 1 h. Next, plates were washed with PBS-Tween 0.05% (PBS-T), and the sera, positive and negative controls diluted 1:1,500 in PBS-T-low-fat-milk 1%, were dispensed in triplicate (100 µl/well) and incubated at 37°C for 30 min. Wells that have the antigen, that are blocked and only incubated with the secondary antibody are the blank situation that works as a negative control. As an internal positive control we used a mixture of sera from several highly seropositive positive CanL dogs. This pool was made aliquoted and used for the duration of the study. When a batch is finishing a new blend of pooled CanL sera is done and then compared to the old batch to confirm the new internal positive control. Consequently, the OD obtained for each antigen is characteristic of the positive control and in conjunction with the negative control above mentioned enables the required quality control for each assay, assuring greater reproducibility. After a washing step, 100 µl/well of secondary antibody—anti-dog IgG conjugated to horseradish peroxidase (Sigma)—diluted 1:1176.5, was added and the plates were incubated at 37°C for 30 min. Plates were washed and incubated with 0.5 mg/ml of *o*-phenylenediamine dihydrochloride (Sigma) for 10 min in the dark. The reaction was stopped with 50 µl/well of HCl 3 M. Absorbance was read at 492 nm in an automatic reader (Synergy 2, BioTek Instruments, Inc., Vermont). All samples and antigens were assayed in triplicate in at least two independent assays.

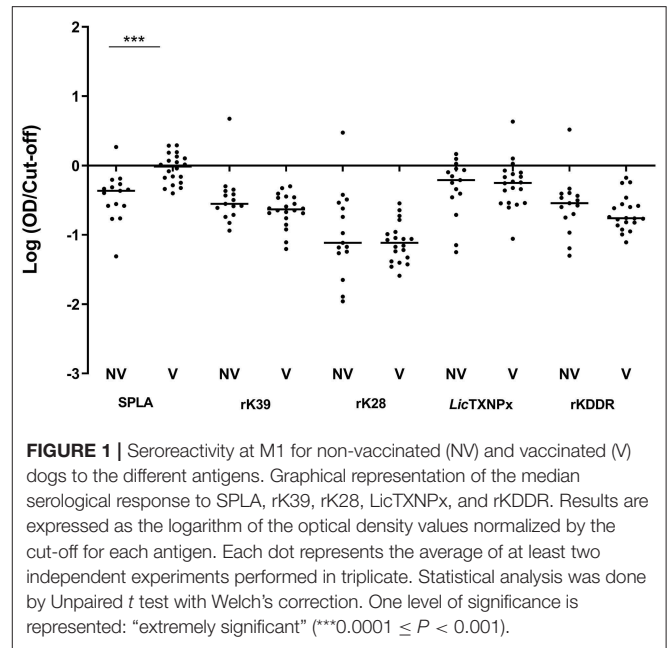
## Statistical Analysis

Receiver operating characteristic (ROC) curves were generated using sera from two distinct groups of animals: 29 dogs with confirmed CanL living in geographical regions of Portugal where CanL is endemic and 121 non-infected dogs originated from a non-endemic region from Portugal. A 95% confidence interval (95% CI) for the area under the ROC curve was considered. Cut-off values were inferred through these curves for each antigen (by choosing the best compromise between sensitivity and specificity associated with the ROC curve). The optical densities (OD) of each sample were normalized by division with the corresponding antigen cut-off. These normalized values were used to assess the ratio between the antigens. The logarithm to base 10 of normalized optical densities was used for comparative graphical representation. The values of sensitivity (Se), specificity (Sp), positive predictive value (PPV), and negative predictive value (NPV) were calculated for each antigen ratio. The ROC curves, Unpaired *t* test with Welch's correction, One-way ANOVA, Mann-Whitney, and Kruskal-Wallis tests were performed using GraphPad Prism 5 software (GraphPad Software, USA).

## RESULTS

### Evaluation of Seroreactivity at M1 Time Point

ROC curves were determined for all antigens and cut-off values inferred (Supplementary Table 1). One month after



**FIGURE 1** | Seroreactivity at M1 for non-vaccinated (NV) and vaccinated (V) dogs to the different antigens. Graphical representation of the median serological response to SPLA, rK39, rK28, LicTXNPx, and rKDDR. Results are expressed as the logarithm of the optical density values normalized by the cut-off for each antigen. Each dot represents the average of at least two independent experiments performed in triplicate. Statistical analysis was done by Unpaired *t* test with Welch's correction. One level of significance is represented: "extremely significant" (\*\*\*)  $0.0001 \leq P < 0.001$ .

primo-vaccination, the reactivity to SPLA was significantly increased ( $P = 0.0007$ ) in vaccinated dogs (V) when comparing to non-vaccinated (NV) (Figure 1). In fact, from the 20 vaccinated animals, 10 presented serology above the defined cut-off for SPLA at M1 time point. The reactivity to rK39, rK28, LicTXNPx, and rKDDR antigens for V and NV groups in this time point was not significantly different ( $P < 0.05$ ).

### Evaluation of Seroreactivity at M25 Time Point

The V-, V+, C-, and C+ reactivity to the 5 antigens tested, was analyzed at the M25 time point (Figure 2). In non-vaccinated dogs, all tested antigens were significantly more recognized by the infected animals when compared to the non-infected group (Figure 2). When considering just vaccinated animals, only rK39 was able to significantly discriminate infected from non-infected animals ( $P = 0.0225$ ). The antigen recognition in V- and C- was not significantly different for the recombinant antigens. The same was not true for SPLA that was significantly more recognized in V- ( $P = 0.0015$ ) (Figure 2A). In fact, 25 months after immunization all vaccinated animals were seropositive to SPLA. Nine V- animals were also seropositive to LicTXNPx being the second antigen with most seropositive animals in this group (Figure 2D). For the other antigens tested, the V- group contained at most one seropositive animal. Concerning the infected animals, the serological response to the different antigens in the V+ and C+ groups was not significantly different for all the antigens tested. Still, with the exception of SPLA, the percentage of seropositive animals was higher in C+ when compared to V+.



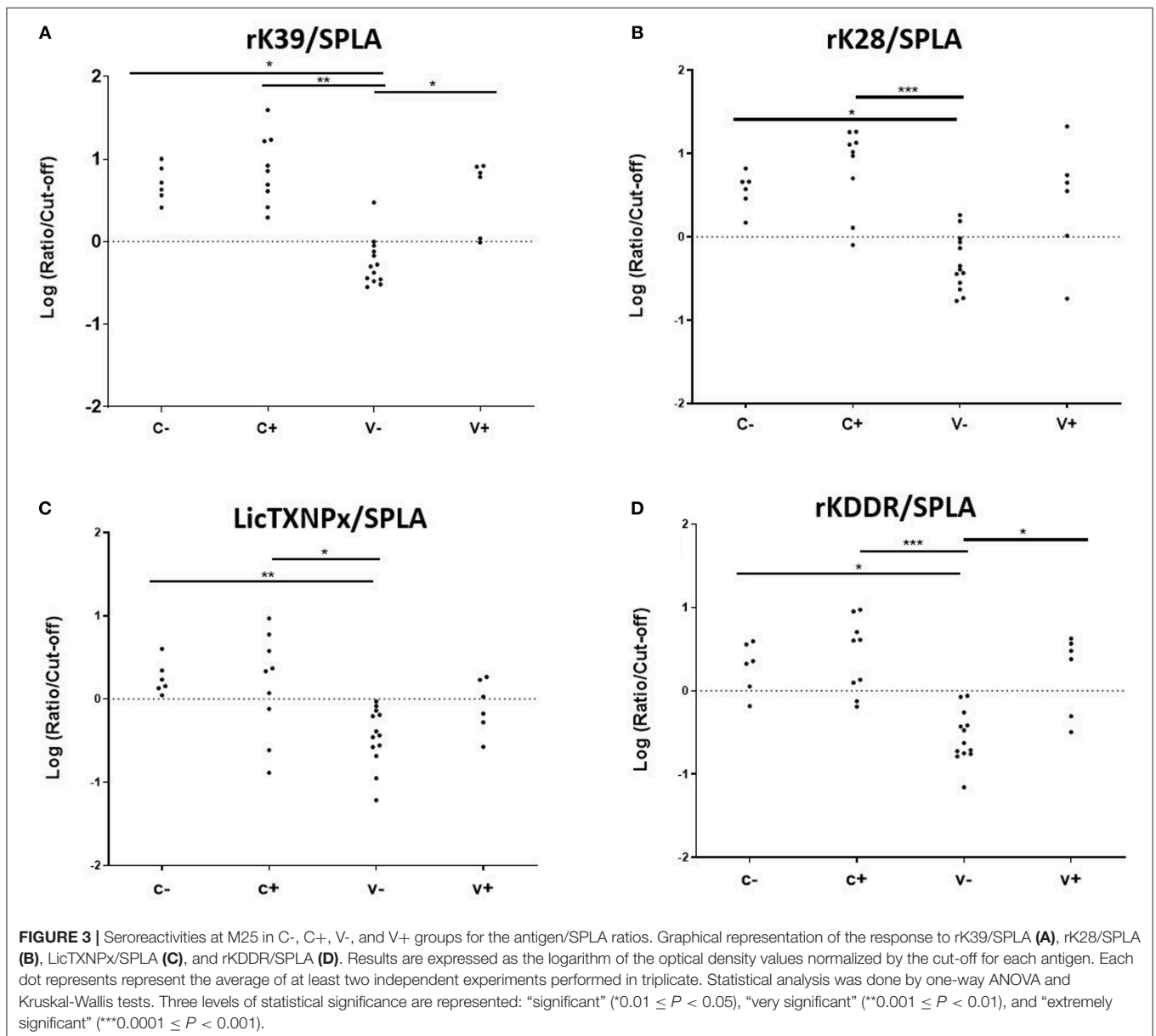
with CaniLeish that were followed up at 1 and 25 months after Primo-vaccination. At a serological level, after 1 month of vaccination, the group of vaccinated animals (V) was significantly

**TABLE 1** | Comparison of seropositivity observed for SPLA with seronegativity observed for the antigens rK39, rK28, LicTXNPx, rKDDR, LAM, and RPM at M25 time point.

	SPLA/rK39	SPLA/rK28	SPLA/LicTXNPx	SPLA/rKDDR
V-	92.3 <sub>(12/13)</sub>	92.3 <sub>(12/13)</sub>	38.5 <sub>(5/13)</sub>	100 <sub>(13/13)</sub>
V+	42.8 <sub>(3/7)</sub>	42.8 <sub>(3/7)</sub>	28.6 <sub>(2/7)</sub>	42.8 <sub>(3/7)</sub>
C-	33.3 <sub>(2/6)</sub>	16.7 <sub>(1/6)</sub>	0.0 <sub>(0/6)</sub>	33.3 <sub>(2/6)</sub>
C+	22.2 <sub>(2/9)</sub>	0.0 <sub>(0/9)</sub>	11.1 <sub>(1/9)</sub>	22.2 <sub>(2/9)</sub>
Total*	31.8 <sub>(7/22)</sub>	18.2 <sub>(4/22)</sub>	13.6 <sub>(3/22)</sub>	31.8 <sub>(7/22)</sub>

\*All non V- dogs.

more reactive to SPLA suggesting an early seroconversion that was maintained. In fact, the response of the V- to SPLA was indistinguishable from the V+ and C+. This reactivity to SPLA resulting from vaccination might translate into cross-reactivity to other tests like IFAT or DAT that rely on the identification of total parasite antigens. In fact, at M25 time point, all vaccinated animals tested positive to IFAT (**Supplementary Table 3**). This observation was also reported by Moreno et al. (24) and Oliva et al. (8). This is not surprising as the secreted material from the parasite contains several surface and intracellular antigens that can be recognized during a normal infection (14, 25). On the contrary, the recombinant antigens tested were not recognized significantly by the non-infected vaccinated group (**Figure 2**). The antigen *LicTXNPx* was an exception, presenting a distinct



behavior with eight seropositive from 13 infected dogs. A possible explanation for this unique behavior might be the possibility of undetected asymptomatic infections. This antigen is a potential serological marker in detecting asymptomatic infection and in early seroconversion (18, 26). Therefore, we cannot rule out that the increase in reactivity to this antigen in V- group might be due to a low intensity (undetected by PCR) asymptomatic infection. Considering the serology results obtained it is clear that CaniLeish vaccination abrogates the usefulness of SPLA and other techniques that rely on the detection of parasites like, IFAT, DAT. Recombinant antigens were not able to detect vaccinated healthy animals not enabling the detection of vaccinated animals in field surveys.

Considering that the vaccine-associated reactivity to SPLA was the only measure of exposure to the vaccine, seropositivity to SPLA, and seronegativity to any given antigen would be a serological profile characteristic of vaccinated non-infected animals as is depicted in **Table 1**. In V- group, with the exception for *LicTXNPx*, the pattern of SPLA seropositive and seronegative to recombinant proteins—rK39, rK28, rKDDR, *LicTXNPx*— was observed in at least 11 of the 13 animals (84.6%), and in all 13 dogs for SPLA+/rKDDR- (100%). Nonetheless, this profile although observed in the V- group was also present in a lesser extent (13.6–31.8%, dependent on the antigen), in the C- group. Considering this scenario, a different approach was tested. We had already reported that the relationship between the seropositivity to rK39 and SPLA presented a pattern that could be predictive of disease associated seropositivity (27), this was once again confirmed in the context of vaccination (**Figure 3**). In fact, by performing the ratios between the four antigens and SPLA (rK39/SPLA, rK28/SPLA, *LicTXNPx*/SPLA, rKDDR/SPLA) and respective ROC curves, we could for the first time distinguish the V- (vaccinated healthy animals) from the other groups studied (V+, C-, and C+). In fact, the rK39/SPLA ratio (with 92.3% of Se and 95.4% of Sp) performed the best in distinguish V- animals, which is more informative than the cumulative seropositivity to the individual antigens.

In conclusion, we reported the serological response to different antigens in the context of CaniLeish vaccination confirming that SPLA is recognized by vaccinated animals limiting the use of IFAT, DAT and total antigen ELISA. We also confirm that the vaccine does not induce significant serological responses to rK39, rK28, *LicTXNPx*, and rKDDR. We also presented a new approach that enabled the identification of seropositive vaccinated healthy animals from vaccinated parasitized animals, non-vaccinated parasitized animals and non-vaccinated healthy animals, using the relation between the seroreactivities of two different antigens (SPLA and rK39) as a form of DIVA (Differentiating Infected from Vaccinated Animals) for CaniLeish. Ultimately, the evaluation of specific serological profiles associated with quantitative serology might enable the discrimination of not only vaccinated animals, as was proposed, but also contribute to finding specific serologic imprints associated do symptomatic and asymptomatic disease.

## DATA AVAILABILITY STATEMENT

All datasets generated for this study are included in the manuscript/**Supplementary Files**.

## ETHICS STATEMENT

All study procedures were approved by the National Authorities in Catalonia (Spain). The study design and technical protocol of investigations were approved by the Department of Biodiversity and the Environment of the Government of Catalonia under number 6760 in accordance with Spanish law on the protection of animals used for experimentation and other scientific purposes (Royal Decree 1201/2005 and Law 32/2007). The Spanish legislation is a transposition of Directive 86/609/EEC.

## AUTHOR CONTRIBUTIONS

NS and CL performed the ELISAS. NS, CL, CA, and AC designed the study. NS, CL, and AC analyzed the data and wrote the paper. JN, JM, and EC were involved in the animal vaccination and characterization of the animals. DB, LB, and RF were involved in the production and disponibilization of rKDDR. All authors read and approved the final manuscript.

## FUNDING

This work was financed by: FEDER—Fundo Europeu de Desenvolvimento Regional funds through the COMPETE 2020—Operacional Programme for Competitiveness and Internationalization (POCI), Portugal 2020, and by Portuguese funds through FCT—Fundação para a Ciência e a Tecnologia/Ministério da Ciência, Tecnologia e Ensino Superior in the framework of the project Institute for Research and Innovation in Health Sciences (POCI-01-0145-FEDER-007274) and project NORTE-01-0145-FEDER-000012, supported by Norte Portugal Regional Operational Programme (NORTE 2020), under the PORTUGAL 2020 Partnership Agreement, through the European Regional Development Fund (ERDF). EC was supported by a research contract funded via the VII PN I+D+I 2013-2016 programme and FEDER Funds (RICET RD12/0018/0003).

## ACKNOWLEDGMENTS

Our sincere thanks to Dr. Steven Reed—Infectious Disease Research Institute, Seattle, USA for providing the rK39 used in the study.

## SUPPLEMENTARY MATERIAL

The Supplementary Material for this article can be found online at: <https://www.frontiersin.org/articles/10.3389/fvets.2019.00373/full#supplementary-material>

## REFERENCES

- Kedzierski L. Leishmaniasis. *Hum Vaccin.* (2011) 7:1204–14. doi: 10.4161/hv.7.11.17752
- Otranto D, Dantas-Torres F. The prevention of canine leishmaniasis and its impact on public health. *Trends Parasitol.* (2013) 29:339–45. doi: 10.1016/j.pt.2013.05.003
- Foroughi-Parvar F, Hatam G. Vaccines for canine leishmaniasis. *Adv Prev Med.* (2014) 2014:569193. doi: 10.1155/2014/569193
- Andrade RA, Silva Araujo MS, Reis AB, Gontijo CM, Vianna LR, Mayrink W, et al. Advances in flow cytometric serology for canine visceral leishmaniasis: diagnostic applications when distinct clinical forms, vaccination and other canine pathogens become a challenge. *Vet Immunol Immunopathol.* (2009) 128:79–86. doi: 10.1016/j.vetimm.2008.10.308
- Reis AB, Giunchetti RC, Carrillo E, Martins-Filho OA, Moreno J. Immunity to *Leishmania* and the rational search for vaccines against canine leishmaniasis. *Trends Parasitol.* (2010) 26:341–9. doi: 10.1016/j.pt.2010.04.005
- Costa DN, Codeco CT, Silva MA, Werneck GL. Culling dogs in scenarios of imperfect control: realistic impact on the prevalence of canine visceral leishmaniasis. *PLoS Negl Trop Dis.* (2013) 7:e2355. doi: 10.1371/journal.pntd.0002355
- De Andrade RA, Reis AB, Gontijo CM, Braga LB, Rocha RD, Araujo MS, et al. Clinical value of anti-*Leishmania (Leishmania) chagasi* IgG titers detected by flow cytometry to distinguish infected from vaccinated dogs. *Vet Immunol Immunopathol.* (2007) 116:85–97. doi: 10.1016/j.vetimm.2007.01.002
- Oliva G, Nieto J, Foglia Manzillo V, Cappiello S, Fiorentino E, Di Muccio T, et al. A randomised, double-blind, controlled efficacy trial of the LiESP/QA-21 vaccine in naive dogs exposed to two *Leishmania infantum* transmission seasons. *PLoS Negl Trop Dis.* (2014) 8:e3213. doi: 10.1371/journal.pntd.0003213
- Alvar J, Canavate C, Molina R, Moreno J, Nieto J. Canine leishmaniasis. *Adv Parasitol.* (2004) 57:1–88. doi: 10.1016/S0065-308X(04)57001-X
- Ribeiro RA, Teixeira-Neto RG, Belo VS, Ferreira EC, Schallig HD, Silva ES. Ability of immunodiagnostic tests to differentiate between dogs naturally infected with *Leishmania infantum* and Leishmune<sup>®</sup>-vaccinated dogs. *Vet Res Commun.* (2015) 39:87–95. doi: 10.1007/s11259-015-9625-6
- Regina-Silva S, Feres AM, Franca-Silva JC, Dias ES, Michalsky EM, De Andrade HM, et al. Field randomized trial to evaluate the efficacy of the Leish-Tec(R) vaccine against canine visceral leishmaniasis in an endemic area of Brazil. *Vaccine.* (2016) 34:2233–9. doi: 10.1016/j.vaccine.2016.03.019
- Carcelen J, Iniesta V, Fernandez-Cotrino J, Serrano F, Parejo JC, Corraliza I, et al. The chimerical multi-component Q protein from *Leishmania* in the absence of adjuvant protects dogs against an experimental *Leishmania infantum* infection. *Vaccine.* (2009) 27:5964–73. doi: 10.1016/j.vaccine.2009.07.069
- Silverman JM, Chan SK, Robinson DP, Dwyer DM, Nandan D, Foster LJ, et al. Proteomic analysis of the secretome of *Leishmania donovani*. *Genome Biol.* (2008) 9:R35. doi: 10.1186/gb-2008-9-2-r35
- Santarem N, Racine G, Silvestre R, Cordeiro-Da-Silva A, Ouellette M. Exoproteome dynamics in *Leishmania infantum*. *J Proteomics.* (2013) 84:106–18. doi: 10.1016/j.jprot.2013.03.012
- Solano-Gallego L, Cardoso L, Pennisi MG, Petersen C, Bourdeau P, Oliva G, et al. Diagnostic challenges in the era of canine *Leishmania infantum* vaccines. *Trends Parasitol.* (2017) 33:706–17. doi: 10.1016/j.pt.2017.06.004
- Venturin GL, Bragato JP, Silva KL, De Lima VM. Recombinant K28 antigen in ELISA in the diagnosis of canine visceral leishmaniasis. *Parasite Immunol.* (2015) 37:670–3. doi: 10.1111/pim.12281
- Dhom-Lemos L, Viana AG, Cunha JLR, Cardoso MS, Mendes TAO, Pinheiro GRG, et al. *Leishmania infantum* recombinant kinesin degenerated derived repeat (rKDDR): a novel potential antigen for serodiagnosis of visceral leishmaniasis. *PLoS ONE.* (2019) 14:e0211719. doi: 10.1371/journal.pone.0211719
- Silvestre R, Santarem N, Cunha J, Cardoso L, Nieto J, Carrillo E, et al. Serological evaluation of experimentally infected dogs by LicTXNPx-ELISA and amastigote-flow cytometry. *Vet Parasitol.* (2008) 158:23–30. doi: 10.1016/j.vetpar.2008.09.001
- Castro H, Sousa C, Santos M, Cordeiro-Da-Silva A, Flohe L, Tomas AM. Complementary antioxidant defense by cytoplasmic and mitochondrial peroxiredoxins in *Leishmania infantum*. *Free Radic Biol Med.* (2002) 33:1552–62. doi: 10.1016/S0891-5849(02)01089-4
- Burns JM Jr, Shreffler WG, Benson DR, Ghalib HW, Badaro R, Reed SG. Molecular characterization of a kinesin-related antigen of *Leishmania chagasi* that detects specific antibody in African and American visceral leishmaniasis. *Proc Natl Acad Sci USA.* (1993) 90:775–9. doi: 10.1073/pnas.90.2.775
- Pattabi S, Whittle J, Mohamath R, El-Safi S, Moulton GG, Guderian JA, et al. Design, development and evaluation of rK28-based point-of-care tests for improving rapid diagnosis of visceral leishmaniasis. *PLoS Negl Trop Dis.* (2010) 4:e822. doi: 10.1371/journal.pntd.0000822
- Santarem N, Cunha J, Silvestre R, Silva C, Moreira D, Ouellette M, et al. The impact of distinct culture media in *Leishmania infantum* biology and infectivity. *Parasitology.* (2014) 141:192–205. doi: 10.1017/S0031182013001388
- Castro H, Sousa C, Novais M, Santos M, Budde H, Cordeiro-Da-Silva A, et al. Two linked genes of *Leishmania infantum* encode trypanothione synthetase localised to cytosol and mitochondrion. *Mol Biochem Parasitol.* (2004) 136:137–47. doi: 10.1016/j.molbiopara.2004.02.015
- Moreno J, Vouldoukis I, Schreiber P, Martin V, McGahie D, Gueguen S, et al. Primary vaccination with the LiESP/QA-21 vaccine (CaniLeish) produces a cell-mediated immune response which is still present 1 year later. *Vet Immunol Immunopathol.* (2014) 158:199–207. doi: 10.1016/j.vetimm.2014.01.011
- Perez-Cabezas B, Santarem N, Cecilio P, Silva C, Silvestre R, Cartita AMJ, et al. More than just exosomes: distinct *Leishmania infantum* extracellular products potentiate the establishment of infection. *J Extracell Vesicles.* (2019) 8:1541708. doi: 10.1080/20013078.2018.1541708
- Santarem N, Silvestre R, Cardoso L, Schallig H, Reed SG, Cordeiro-Da-Silva A. Application of an improved enzyme-linked immunosorbent assay method for serological diagnosis of canine leishmaniasis. *J Clin Microbiol.* (2010) 48:1866–74. doi: 10.1128/JCM.02402-09
- Lima C, Mesquita JR, Brancal H, Vahlenkamp T, Teixeira AR, Cardoso L, et al. The use of *Escherichia coli* total antigens as a complementary approach to address seropositivity to *Leishmania* antigens in canine leishmaniasis. *Parasitology.* (2017) 144:1384–93. doi: 10.1017/S0031182017000713

**Conflict of Interest:** The authors declare that the research was conducted in the absence of any commercial or financial relationships that could be construed as a potential conflict of interest.

Copyright © 2019 Lima, Santarém, Nieto, Moreno, Carrillo, Bartholomeu, Bueno, Fujiwara, Amorim and Cordeiro-da-Silva. This is an open-access article distributed under the terms of the Creative Commons Attribution License (CC BY). The use, distribution or reproduction in other forums is permitted, provided the original author(s) and the copyright owner(s) are credited and that the original publication in this journal is cited, in accordance with accepted academic practice. No use, distribution or reproduction is permitted which does not comply with these terms.