



TTF-1 Positive Primary Small Cell Carcinoma of the Breast: A Case Report and Review of the Literature

Hinda Boutrid^{1,2}, Mahmoud Kassem^{1,2}, Gary Tozbikian³, Evan Morgan^{1,2}, Julia White^{1,4}, Manisha Shah^{1,2}, Jeffrey Vandeusen^{1,2}, Sagar Sardesai^{1,2}, Nicole Williams^{1,2}, Daniel G. Stover^{1,2}, Maryam Lustberg^{1,2}, Robert Wesolowski^{1,2}, Vinay Pudavalli⁵, Terence M. Williams⁴, Bhavana Konda², Stephanie Fortier², David Carbone², Bhuvaneswari Ramaswamy^{1,2} and Mathew A. Cherian^{1,2*}

OPEN ACCESS

Edited by:

Veronica Vella,
University of Catania, Italy

Reviewed by:

Dario Giuffrida,
Mediterranean Institute of Oncology
(IOM), Italy
Eleonora Molinaro,
University of Pisa, Italy

*Correspondence:

Mathew A. Cherian
mathew.cherian@osumc.edu

Specialty section:

This article was submitted to
Cancer Endocrinology,
a section of the journal
Frontiers in Endocrinology

Received: 09 January 2020

Accepted: 30 March 2020

Published: 29 April 2020

Citation:

Boutrid H, Kassem M, Tozbikian G, Morgan E, White J, Shah M, Vandeusen J, Sardesai S, Williams N, Stover DG, Lustberg M, Wesolowski R, Pudavalli V, Williams TM, Konda B, Fortier S, Carbone D, Ramaswamy B and Cherian MA (2020) TTF-1 Positive Primary Small Cell Carcinoma of the Breast: A Case Report and Review of the Literature. *Front. Endocrinol.* 11:228. doi: 10.3389/fendo.2020.00228

¹ Stefanie Spielman Comprehensive Breast Cancer, The Ohio State University, Columbus, OH, United States, ² Division of Medical Oncology, Comprehensive Cancer Center, The Ohio State University Medical Center, Columbus, OH, United States, ³ Department of Pathology, The Ohio State University, Columbus, OH, United States, ⁴ Department of Radiation Oncology, Comprehensive Cancer Center, The Ohio State University Medical Center, Columbus, OH, United States, ⁵ Department of Neurological Surgery, Comprehensive Cancer Center, The Ohio State University Medical Center, Columbus, OH, United States

Primary small cell carcinoma of the breast (SCCB) is a rare tumor subtype comprising <0.1% of all breast carcinomas. Here we present a case of thyroid transcription factor-1 (TTF-1) positive SCCB that recurred within 3 years of diagnosis in the lung and lymph nodes. Given the small number of cases, no clear guidelines exist on the appropriate management of patients with these aggressive tumors. We present a case study and review the current literature to highlight the knowledge gaps and needs of patients with these rare tumors. A 50-year-old premenopausal woman with no family history, presented with a palpable right breast mass. Biopsy was consistent with primary SCCB that was poorly differentiated, positive for synaptophysin and chromogranin and TTF-1 and presence of ductal carcinoma *in situ* component showing neuroendocrine differentiation. Imaging with PET, CT, and MRI brain excluded any other sites of primary disease. She underwent a right lumpectomy with axillary lymph node dissection and was treated with adjuvant cisplatin-based chemotherapy and concurrent radiation therapy. Thirty-four months later, routine scans showed a new right lower-lobe lung nodule and an enlarged sub-carinal node that was proven to be poorly differentiated neuroendocrine cancer. This case report sheds light on a rarely described disease and provides a comprehensive approach to diagnosis and management. Primary SCCB is an extremely rare, aggressive form of breast cancer that is molecularly and histologically similar to SCLC. However, a review of the literature highlights recent mutational analyses that show important differences between these two cancer types, including an increase in PIK3CA mutations in primary SCCB. Further studies, including genomic analyses are needed to better define this malignancy and to develop a standard treatment.

Keywords: TTF-1, small cell cancer, breast cancer, PDL-1, neuroendocrine cancer

INTRODUCTION

Primary poorly differentiated neuroendocrine carcinoma/small cell carcinoma of the breast (SCCB) is a distinct subtype of breast cancer, accounting for <1% of cases of primary breast cancer. SCCB belongs to the class of tumors known as extra-pulmonary small cell carcinomas, which have also been described in the urinary bladder, prostate, esophagus, stomach, colon, rectum, gallbladder, larynx, salivary glands, cervix, and skin. The first primary case was described by Wade et al. in 1983 (1). Although it typically presents in women, there have been a few cases of primary SCCB in males reported in the literature (2). SCCB has been diagnosed in patients aged 29–81 years (3, 4) who present with a palpable breast mass. The histologic characteristics of mammary SCC are similar to SCC arising in other organs. The diagnosis of primary mammary SCC can be made if a non-mammary metastasis to the breast is excluded, or an *in situ* component is identified histologically.

Below we describe a case of a 50-year old postmenopausal woman with early stage primary SCCB of the right breast without lymph node involvement. Following treatment, she remained disease-free for 3 years, but developed a right lower lobe nodule and enlarged sub-carinal lymph node, which was treated like limited small cell lung cancer (SCLC). This case is unique in that the invasive SCCB was associated with an *in situ* component which was also purely of neuroendocrine differentiation.

CASE PRESENTATION

A 50-year-old G4P3 premenopausal South Asian woman with a history of gastroesophageal reflux disease and polycystic ovarian syndrome initially presented with a painful, palpable mass in

the upper outer quadrant of the right breast noticed on self-breast exam. The patient was a lifelong non-smoker and did not report use of oral contraceptives or hormone replacement therapy. She had no personal or family history of breast or ovarian cancers and had a normal screening mammogram 1 year prior to presentation.

Clinical examination revealed an irregular, firm 2.4 cm mass in the upper outer quadrant of the right breast, approximately 9.5 cm from the nipple. There were no changes of the overlying skin or nipple or palpable axillary adenopathy. Her lungs were clear to auscultation; abdominal exam was without masses and no inguinal, cervical or contralateral axillary adenopathy were palpated. Diagnostic mammogram and ultrasound (**Figures 1A,B**) indicated a 2.3 × 1.3 × 2.3 cm irregular mass in the upper outer quadrant of the right breast, highly suggestive of malignancy. Ultrasound guided core needle biopsy revealed poorly differentiated neuroendocrine carcinoma/small cell carcinoma (**Figures 2A,B**), estrogen receptor (ER) negative, progesterone receptor (PR) positive (10% weak intensity), and human epidermal growth receptor 2 (HER2) negative. Immuno-histochemical staining was positive for thyroid transcription factor 1 (TTF-1), synaptophysin and chromogranin A, and rare cells positive for GATA3, consistent with primary SCCB (**Figures 2C,D**). Importantly, and uniquely, an *in situ* component was identified (highlighted by the myoepithelial marker p40) which was also of purely neuroendocrine differentiation, which was conclusive evidence that this was a primary SCC of the breast. Due to the rarity of the case, these findings were confirmed at MD Anderson Cancer Center.

Radiologic workup was conducted to exclude a non-mammary primary tumor origin and to complete staging for the breast cancer. Additionally, a positron emission tomography (PET) computerized tomography (CT) scans showed no evidence of lung, pancreatic, adrenal, or pelvic masses (**Figures 3A,B**). Plasma neuropeptide levels revealed elevations in gastrin (207 pg/ml; normal 0–125 pg/ml), substance P (382 pg/ml; normal 0–240 pg/ml) and neurotensin (306 pg/ml; normal <100 pg/ml).

Abbreviations: CT, Computerized Tomography; ER, Estrogen Receptor; HER2, Human Epidermal Growth Factor Receptor 2; PET, Positron Emission Tomography; PR, Progesterone Receptor; SCCB, Small cell Carcinoma of the Breast; SCLC, Small Cell Lung Cancer; TTF1, Thyroid Transcription Factor 1.



FIGURE 1 | (A) Diagnostic Mammogram: Right medio-lateral oblique view showing an irregular high density mass in the superior central aspect of the right breast. **(B)** Ultrasonography of right breast and axilla: Irregular hypoechoic macro-lobulated mass in the superior central aspect of the right breast.

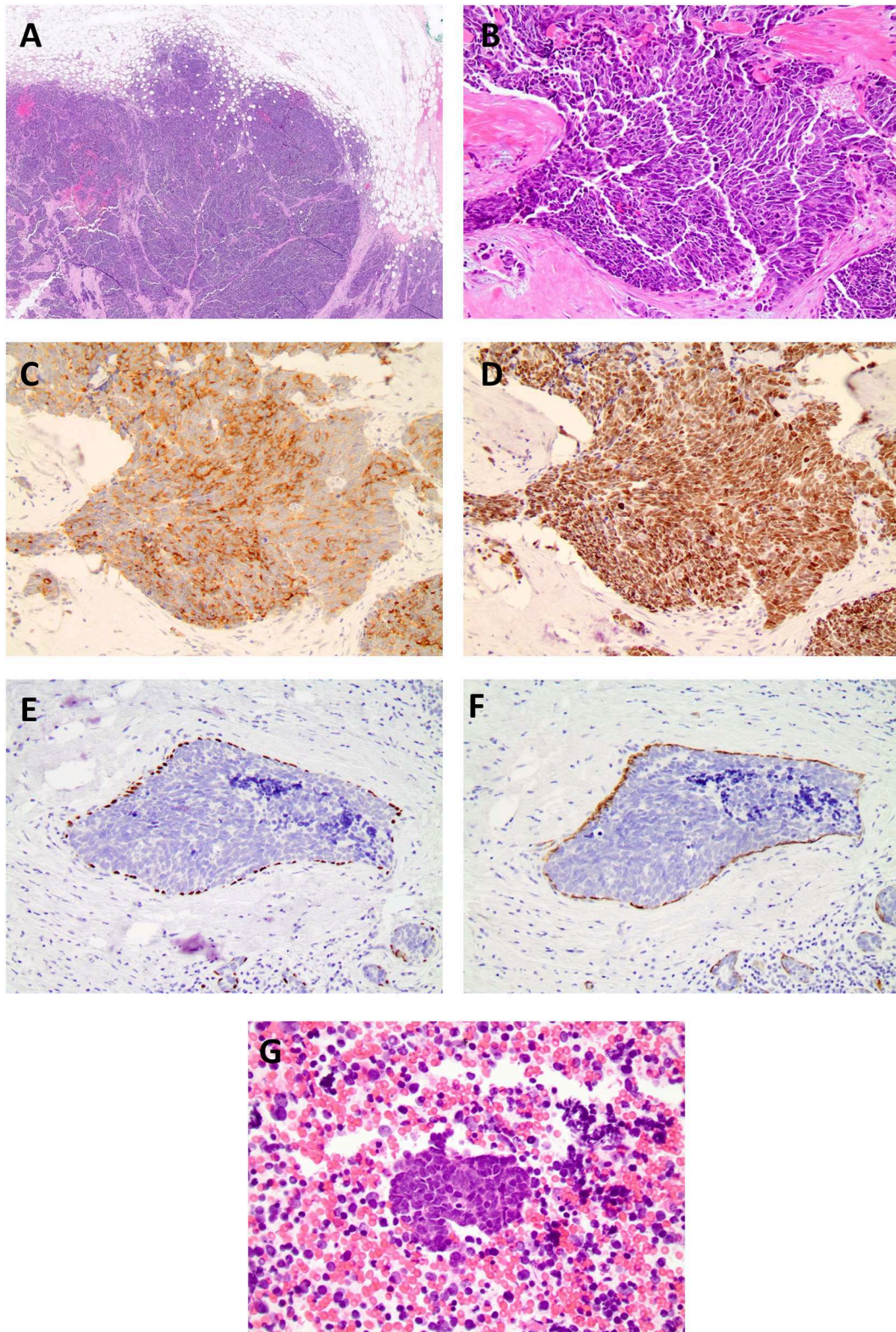


FIGURE 2 | (A) Histopathological examination of the specimen stained on low (4x), **(B)** high power field (20x, 40x) showed neoplastic cells with high nuclear: cytoplasmic ratio, hyperchromatic nuclei, minimal cytoplasm, and indistinct nuclei, nuclear molding, high mitotic rate, consistent with the diagnosis of small cell

(Continued)

FIGURE 2 | carcinoma. Biopsy of breast cancer primary. Immuno-histochemical staining for TTF-1 synaptophysin, chromogranin, and p40 and smooth muscle myosin staining (SMMS) consistent with a diagnosis of primary SCCB, **(C)** small cell synaptophysin 20X. **(D)** small cell TTF-1 20X. **(E)** *In situ* component with neuroendocrine differentiation p40. **(F)** *in situ* component smooth muscle myosin stain. **(G)** Histopathological examination of the fine needle aspiration of the sub-carinal node revealed metastatic small cell carcinoma (Lymph node 40x).

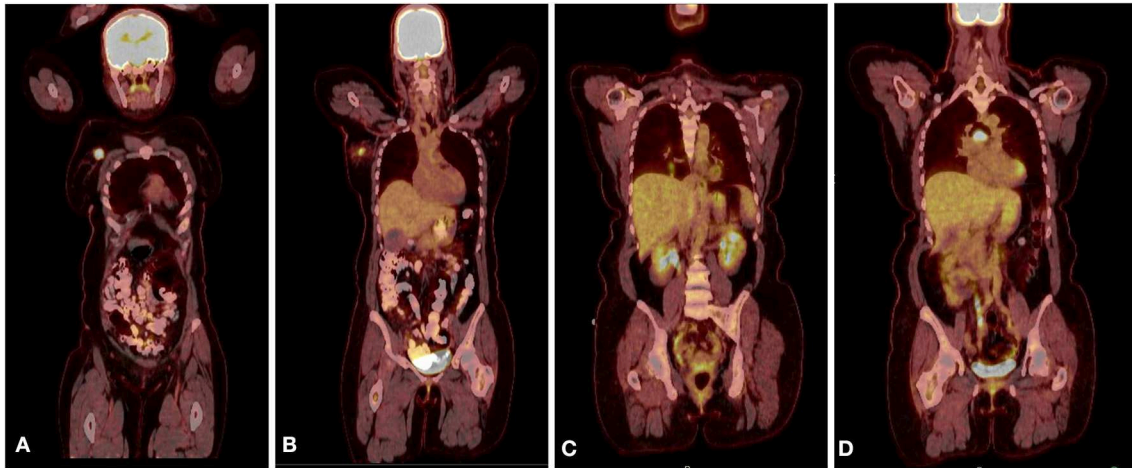


FIGURE 3 | **(A)** PET CT scan showing the primary lesion in the right upper outer quadrant of the right breast. **(B)** A hyper-metabolic right axillary lymph node, which is compatible with the patient's known right breast primary malignancy and a presumed metastatic right axillary lymph node. **(C)** PET scan after recurrence showing new lung nodules with FDG uptake. **(D)** PET scan after recurrence showing sub-carinal lymph node with new intense focus of FDG uptake.

Plasma glucagon levels were also elevated (plasma neuropeptides or tumor markers are not required for the diagnosis). Germline genetic testing revealed a MUTYH E480 non-sense mutation which is associated with autosomal recessive MUTYH associated polyposis and would not be pathogenic when heterozygous with wild-type.

Based on the early clinical stage, the patient underwent a right lumpectomy with axillary lymph node dissection. Pathology revealed a poorly differentiated neuroendocrine carcinoma/small cell carcinoma, ER/PR and HER2, were repeated on the resection specimen and were all negative with Ki-67 proliferation index of 70%. In addition, a high grade neuroendocrine *in situ* component was identified (**Figures 2E,F**). Immuno-histochemical staining was positive for chromogranin A, CD56, synaptophysin and TTF-1 and, notably, the *in-situ* component was also positive for TTF-1. Tumor infiltrating lymphocytes (TILs) were low positive for PD-1 staining (1–24%) and tumor cells and TILs were negative for PD-L1 staining (antibody used for PD-L1 was clone 22C3 through Foundation One). The surgical margins were free of tumor and twelve lymph nodes were negative. The patient was diagnosed with primary SCCB (stage IIA).

Foundation One testing for mutations in thirty-five genes revealed the presence of a pathogenic variant in the MUTYH gene (c.1438G>T, p.Glu480*), loss of exons 19-27 in RB1, SMARCA4 P1975 mutation, and Tp53 R110_L111insL mutation as well as amplification in PIK3CA, FLT3, MYC, SOX2 and CDK8. She subsequently received adjuvant chemotherapy with four cycles of cisplatin 80 mg/m² on day 1 and

etoposide 100 mg/m² on days 1, 2, and 3 of a 21-day cycle. She received right whole breast radiation therapy in the form of 5000cGy in 25 fractions followed by a 1000cGy boost in 5 fractions (6000cGy cumulative) to the surgical site.

Following treatment, the patient remained disease-free for 3 years, as evidenced by lack of clinical evidence of recurrence and negative imaging. Routine follow-up CT scans of the thorax showed a right lower lobe nodule and enlarged sub-carinal lymph node, which showed FDG avidity by PET scan (**Figures 3C,D**). Bronchoscopy and trans-bronchial fine needle aspiration of the sub-carinal node revealed metastatic small cell carcinoma with Ki-67 staining in >90% of cells (**Figure 2G**). PD-L1 tumor proportion score was 0%. Repeat Foundation One testing performed on the slide from the sub-carinal lymph node revealed microsatellite stable status with a tumor mutation burden of 4 mutations/Mb, with amplifications noted in the CDK8, EPHB1, FLT3, MYC, PIK3CA, PIK3CB, RAD21 and SOX2 and loss of Rb and a MUTYH p E466 non-sense mutation.

She was treated with one cycle of cisplatin (80 mg/m² on day 1) and etoposide 100mg/m² on day 1-3) followed by one cycle concurrent with 45Gy external beam irradiation to the right lower lobe and mediastinum in 30 twice daily fractions. Follow-up CT scan of the chest revealed resolution of the right lower lobe nodule with residual scarring and significant decrease in size of the previously enlarged sub-carinal lymph node. She was then treated with two cycles of cisplatin-etoposide and two cycles of carboplatin-etoposide and

TABLE 1 | Case reports of primary small cell neuroendocrine breast carcinoma.

References	Age at diagnosis	Stage at diagnosis	Primary treatment	Adjuvant treatment	Outcome	Follow up (months)
Wade et al. (1)	52	4 (mets to liver)	Modified radical mastectomy	Doxorubicin, vincristine, cyclophosphamide	Death from metastatic disease	9
Jundt et al. (6)	52 (male)	4	Chemo/XRT	None	Died from metastatic disease to the spine	14
Papotti et al. (7)	50	3	Mastectomy	Streptozotocin	Died from metastatic disease	14
	68	3	Mastectomy	Tamoxifen	Died from cerebral hemorrhage	9
	41	3	Mastectomy	XRT	Died from metastatic disease	15
	64	1	Lumpectomy	None	Alive without disease	44
Francois et al. (8)	68	2	Modified radical mastectomy	Chemo, XRT	Death from metastatic disease	21
	45	2	Lumpectomy	NR	NR	NR
Chua et al. (9)	56	3	Mastectomy	None	Alive without disease	48
Fukunaga and Ushigome (10)	67	2	Chemotherapy	XRT	Alive without disease	33
Sebenik et al. (11)	60	3	Fluorouracil, epirubicine, and cyclophosphamide	Left modified radical mastectomy, axillary lymph node dissection, XRT, cisplatin/etoposide + FEC (x 4 cycles)	Alive with metastatic disease	9
Samli et al. (12)	64	1	Lumpectomy	Chemo	Alive without disease	10
	57	2	Mastectomy	Chemo	Alive without disease	10
	44	2	Lumpectomy	Chemo/XRT	Alive without disease	27
	62	3	Neo-adjuvant chemo	Mastectomy, adjuvant chemo, tamoxifen	Alive with metastatic disease	32
	70	3	Lumpectomy	Chemo/XRT	Alive without disease	3
	46	3	Mastectomy	Chemo	Alive with metastatic disease	11
	51	1	Lumpectomy	XRT	Alive without disease	25
	43	1	Lumpectomy	XRT	alive without disease	30
	50	3	Lumpectomy	Chemo/tamoxifen	Alive without disease	35
	41	2	Mastectomy	Cyclophosphamide, methotrexate, fluorouracil	Alive without disease	16
Yamasaki et al. (14)	41	NR	Mastectomy	NR	NR	NR
	51	NR	Lumpectomy	NR	NR	NR
Hoang et al. (15)	46	2	Lumpectomy	Etoposide/cisplatin, XRT	Alive without disease	9
Salmo and Connolly (16)	61	3	mastectomy	NR	NR	NR
Bergman et al. (17)	56	3	Chemotherapy	Modified radical mastectomy, chemo	Death	14
Bigotti et al. (18)	71	2	Mastectomy	Tamoxifen	Alive without disease	12
Jochems and Tjalma (19)	53	3	Cisplatin + etoposide	Lumpectomy	Alive without disease	6
Mariscal et al. (20)	58	3	Lumpectomy	Adriamycin, cisplatin, XRT	Alive without disease	18
Sridhar et al. (21)	53	3	Mastectomy	None	Alive without disease	34
Yamamoto et al. (22)	75	3	Mastectomy	CMF, tamoxifen	Alive without disease	43
	46	1	Lumpectomy	XRT, cisplatin+etoposide	Alive without disease	48
Adegbola et al. (23)	60	1	Lumpectomy	XRT, cisplatin+etoposide	Died from disease recurrence	26
	61	3	Lumpectomy	XRT, cisplatin+etoposide	Alive with metastatic disease	6
	40	2	Lumpectomy	NR	NR	NR
Cabibi et al. (24)						

(Continued)

TABLE 1 | Continued

References	Age at diagnosis	Stage at diagnosis	Primary treatment	Adjuvant treatment	Outcome	Follow up (months)
Stein et al. (25)	54	3	Cisplatin+etoposide	Lumpectomy, XRT	Alive without disease	24
Kitakata et al. (26)	44	3	Modified radical mastectomy	Epirubicin/cyclophosphamide	Alive without disease	22
Shaco-Levy et al. (27)	28	1	Lumpectomy	Chemo, XRT	NR	NR
Kinoshita et al. (28)	31	3	Adriamycin+docetaxel	Modified radical mastectomy	Died from metastatic disease	6
Sadanaga et al. (29)	33	2	Mastectomy	epirubicin+cyclophosphamide, XRT	Alive without disease	60
Hojo et al. (30)	60	2	Modified radical mastectomy	None	Developed recurrence with metastatic disease and died despite chemotherapy	26
Quiros Rivero et al. (31)	41	2	FAC+taxol+etoposide	Lumpectomy, XRT	Alive without disease	20
Rineer et al. (4)	81	3	Irinotecan+carboplatin	XRT	Alive with disease	26
Yamaguchi et al. (32)	51	2	Mastectomy	Paclitaxel	Alive with metastatic disease	12
Latif et al. (33)	53	2	Carboplatin+etoposide	MRM, XRT	Alive without disease	NR
Nicoletti et al. (34)	40	2	Mastectomy	Adriamycin+cytoxan, carboplatin+etoposide, tamoxifen, anastrozole	Alive without disease	96
Kawanishi et al. (35)	67	1	Lumpectomy	Anastrozole	Alive without disease	12
Boyd and Hayes (36)	50	2	Mastectomy	Docetaxel+cyclophosphamide	Alive with metastatic disease	36
Ge et al. (37)	39	2	Modified radical mastectomy	Docetaxel+carboplatin	Alive without disease	NR
Ochoa et al. (38)	25	4	Cisplatin+etoposide	Radiation to the breast	Death from metastatic disease	6
Puscas et al. (39)	50	3	Fluorouracil+cyclophosphamide+taxotere	Mastectomy, XRT	Alive with metastatic disease	NR
Jiang et al. (2)	79 (male)	2	Modified radical mastectomy	Irinotecan+carboplatin	Died from metastatic disease	27
Dalle et al. (40)	47	2	Mastectomy	Cisplatin+etoposide, fluorouracil+epirubicin+cyclophosphamide, tamoxifen	Alive without disease	10
Raber et al. (41)	38	3	Carboplatin+etoposide	Modified radical mastectomy	Alive without disease	15
Tremelling et al. (42)	65	3	Carboplatin+etoposide	XRT	Alive without disease	3
	61	3	Lumpectomy	XRT, cisplatin+etoposide	Alive with metastatic disease	6

NR, not reported.

concurrent atezolizumab, similar to the regimen used in the IMpower133 trial (5) for extensive stage small cell lung cancer but without maintenance atezolizumab, with radiologically and clinically stable disease and the MRI brain had no evidence of CNS metastases.

DISCUSSION

Primary SCCB is a rare, aggressive form of breast carcinoma, with only 56 cases reported in the literature (Table 1). It typically presents as a palpable breast or axillary mass in women over the age of 60, with lymph node involvement in 50–67% of cases at the time of diagnosis (33). Primary SCCB has similar

histologic, morphologic and immune-histochemical features to SCLC, including the expression of TTF-1 in up to 50% of cases. The diagnosis of SCCB requires the clinical exclusion of a metastasis from a non-mammary primary site, or identification of an *in situ* component.

Due to the rarity and limited reports of primary SCCB, a standard approach to treatment is largely undefined. Treatment regimens in the literature include combinations of surgery, chemotherapy, radiation therapy, and endocrine therapy depending on tumor size and lymph node status. Hormonal therapy is added if the tumor expresses the appropriate receptors (13, 23, 43). More recent reports have described treatment with breast conservation therapy combined with

- and review of the literature. *Am J Clin Pathol.* (2004) 121:117–21. doi: 10.1309/737Y07JNP8GQQJY
18. Bigotti G, Coli A, Butti A, del Vecchio M, Tartaglione R, Massi G. Primary small cell neuroendocrine carcinoma of the breast. *J Exp Clin Cancer Res.* (2004) 23:691–6.
 19. Jochems L, Tjalma WA. Primary small cell neuroendocrine tumour of the breast. *Eur J Obstet Gynecol Reprod Biol.* (2004) 115:231–3. doi: 10.1016/j.ejogrb.2003.12.013
 20. Mariscal A, Balliu E, Díaz R, Casas JD, Gallart AM. Primary oat cell carcinoma of the breast: imaging features. *AJR Am J Roentgenol.* (2004) 183:1169–71. doi: 10.2214/ajr.183.4.1831169
 21. Sridhar P, Matey P, Aluwihare N. Primary carcinoma of breast with small-cell differentiation. *Breast.* (2004) 13:149–51. doi: 10.1016/j.breast.2003.07.001
 22. Yamamoto J, Ohshima K, Nabeshima K, Ikeda S, Iwasaki H, Kikuchi M. Comparative study of primary mammary small cell carcinoma, carcinoma with endocrine features and invasive ductal carcinoma. *Oncol Rep.* (2004) 11:825–31. doi: 10.3892/or.11.4.825
 23. Adegbola T, Connolly C, Mortimer G. Small cell neuroendocrine carcinoma of the breast: a report of three cases and review of the literature. *J Clin Pathol.* (2005) 58:775–8. doi: 10.1136/jcp.2004.020792
 24. Cabibi D, Cipolla C, Florena AM, Fricano S, Barresi E, Vieni S, et al. Solid variant of mammary “adenoid cystic carcinoma with basaloid features” merging with “small cell carcinoma”. *Pathol Res Pract.* (2005) 201:705–11. doi: 10.1016/j.prp.2005.04.012
 25. Stein ME, Gershuny A, Abdach L, Quigley MM. Primary small-cell carcinoma of the breast. *Clin Oncol.* (2005) 17:201–2. doi: 10.1016/j.clon.2005.01.005
 26. Kitakata H, Yasumoto K, Sudo Y, Minato H, Takahashi Y. A case of primary small cell carcinoma of the breast. *Breast Cancer.* (2007) 14:414–9. doi: 10.2325/jbcs.14.414
 27. Shaco-Levy R, Dyomin V, Kachko L, Sion-Vardy N, Geffen DB, Koretz M. Small cell carcinoma of the breast: case report. *Eur J Gynaecol Oncol.* (2007) 28:142–4.
 28. Kinoshita S, Hirano A, Komine K, Kobayashi S, Kyoda S, Takeyama H, et al. Primary small-cell neuroendocrine carcinoma of the breast: report of a case. *Surg Today.* (2008) 38:734–8. doi: 10.1007/s00595-007-3716-0
 29. Sadanaga N, Okada S, Shiotani S, Morita M, Kakeji Y, Kitamura K, et al. Clinical characteristics of small cell carcinoma of the breast. *Oncol Rep.* (2008) 19:981–5. doi: 10.3892/or.19.4.981
 30. Hojo T, Kinoshita T, Shien T, Terada K, Hirose S, Isobe Y, et al. Primary small cell carcinoma of the breast. *Breast Cancer.* (2009) 16:68–71. doi: 10.1007/s12282-008-0057-9
 31. Quirós Rivero J, Muñoz García JL, Cabrera Rodríguez JJ, González Ferreira JA, Samper Ots P, Ríos Kavadoy Y. Extrapulmonary small cell carcinoma in breast and prostate. *Clin Transl Oncol.* (2009) 11:698–700. doi: 10.1007/s12094-009-0427-6
 32. Yamaguchi R, Tanaka M, Otsuka H, Yamaguchi M, Kaneko Y, Fukushima T, et al. Neuroendocrine small cell carcinoma of the breast: report of a case. *Med Mol Morphol.* (2009) 42:58–61. doi: 10.1007/s00795-008-0432-9
 33. Latif N, Rosa M, Samian L, Rana F. An unusual case of primary small cell neuroendocrine carcinoma of the breast. *Breast J.* (2010) 16:647–51. doi: 10.1111/j.1524-4741.2010.00974.x
 34. Nicoletti S, Papi M, Drudi F, Fantini M, Canuti D, Tamburini E, et al. Small cell neuroendocrine tumor of the breast in a 40 year-old woman: a case report. *J Med Case Rep.* (2010) 4:201. doi: 10.1186/1752-1947-4-201
 35. Kawanishi N, Norimatsu Y, Funakoshi M, Kamei T, Sonobe H, Kawano R, et al. Fine needle aspiration cytology of solid neuroendocrine carcinoma of the breast: a case report. *Diagn Cytopathol.* (2011) 39:527–30. doi: 10.1002/dc.21494
 36. Boyd AS, Hayes BB. Metastatic small cell neuroendocrine carcinoma of the breast. *J Cutan Pathol.* (2012) 39:1042–6. doi: 10.1111/j.1600-0560.2012.01970.x
 37. Ge QD, Lv N, Cao Y, Wang X, Tang J, Xie ZM, et al. A case report of primary small cell carcinoma of the breast and review of the literature. *Chin J Cancer.* (2012) 31:354. doi: 10.5732/cjc.012.10012
 38. Ochoa R, Sudhindra A, Garcia-Buitrago M, Romilly AP, Cortes J, Gomez H, et al. Small-cell cancer of the breast: what is the optimal treatment? A report and review of outcomes. *Clin Breast Cancer.* (2012) 12:287–92. doi: 10.1016/j.clbc.2012.03.007
 39. Puscas E, Lisencu C, Neagoe I. Case report of primary small cell neuroendocrine breast cancer. *Clujul Med.* (2013) 86:156–9.
 40. Abou Dalle I, Abbas J, Boulos F, Salem Z, Assi HI. Primary small cell carcinoma of the breast: a case report. *J Med Case Rep.* (2017) 11:290. doi: 10.1186/s13256-017-1467-0
 41. Raber B, Dao T, Howard E, Bredeweg A. Primary small-cell carcinoma of the breast. *Proc Bayl Univ Med Cent.* (2017) 30:200–2. doi: 10.1080/08998280.2017.11929586
 42. Tremelling A, Samuel S, Murray M. Primary small cell neuroendocrine carcinoma of the breast – A case report and review of the literature. *Int J Surg Case Rep.* (2017) 38:29–31. doi: 10.1016/j.ijscr.2017.07.002
 43. Adams R, Dyson P, Barthelmes L. Neuroendocrine breast tumours: breast cancer or neuroendocrine cancer presenting in the breast? *Breast.* (2014) 23:120–7. doi: 10.1016/j.breast.2013.11.005
 44. Abbasi NZ, Zahur Z, Sheikh AS, Khan AA, Ali F, Memon KH, et al. Solid neuroendocrine carcinoma of the breast. *J Coll Physicians Surg Pak.* (2013) 23:820–2. 11.
 45. Ali S, Desai G, Thomas S, Aggarwal L, Meena K, Kumar J, et al. Primary neuroendocrine carcinoma breast: our experience. *Breast Disease.* (2014) 34:95–9. doi: 10.3233/BD-130357
 46. Sanguinetti A, Santoprete S, Lucchini R, Triola R, Loreti F, Avenia N. A rare breast tumor: solid neuroendocrine carcinoma. *Ann Ital Chir.* (2013) 84:81–5.
 47. Inno A, Bogina G, Turazza M, Bortesi L, Duranti S, Massocco A, et al. Neuroendocrine carcinoma of the breast: current evidence and future perspectives. *Oncologist.* (2016) 21:28–32. doi: 10.1634/theoncologist.2015-0309
 48. Wang J, Wei B, Albarracin CT, Hu J, Abraham SC, Wu Y. Invasive neuroendocrine carcinoma of the breast: a population-based study from the surveillance, epidemiology and end results (SEER) database. *BMC Cancer.* (2014) 14:147. doi: 10.1186/1471-2407-14-147
- Conflict of Interest:** The authors declare that the research was conducted in the absence of any commercial or financial relationships that could be construed as a potential conflict of interest.

Copyright © 2020 Boutrid, Kassem, Tozbikian, Morgan, White, Shah, Vandeusen, Sardesai, Williams, Stover, Lustberg, Wesolowski, Pudavalli, Williams, Konda, Fortier, Carbone, Ramaswamy and Cherian. This is an open-access article distributed under the terms of the Creative Commons Attribution License (CC BY). The use, distribution or reproduction in other forums is permitted, provided the original author(s) and the copyright owner(s) are credited and that the original publication in this journal is cited, in accordance with accepted academic practice. No use, distribution or reproduction is permitted which does not comply with these terms.